



Republic of the Philippines
DEPARTMENT OF PUBLIC WORKS AND HIGHWAYS
OFFICE OF THE SECRETARY
Bonifacio Drive, Port Area Manila



097.13 DPWH
08.13.2024

AUG 12 2024

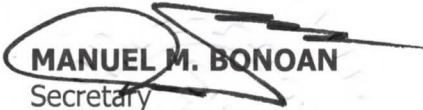
DEPARTMENT ORDER)
No. 148)
Series of 2024)
8/13/2024

SUBJECT: Guidelines on the Accreditation and Assignment of Contractors' and Consultants' Project Engineers

In view of the full implementation on assigning only qualified and competent project engineers of the contractors and consultants in the implementation of DPWH projects, the hereto attached guidelines on the accreditation and assignment of Contractors' and Consultants' Project Engineers are hereby prescribed.

This Order shall supersede Department Order No. 118, series of 2024 and other issuances inconsistent herewith.

This Order takes effect immediately.


MANUEL M. BONOAN
Secretary

Department of Public Works and Highways
Office of the Secretary



WIN4U02021

GUIDELINES ON THE ACCREDITATION AND ASSIGNMENT OF CONTRACTORS' AND CONSULTANTS' PROJECT ENGINEERS

1.0 CLASSIFICATION OF PROJECT ENGINEERS

Project engineers shall be classified according to the results of accreditation examination and the total points obtained in Section 2.0.

1.1 Accreditation Examination

Applicants who got a score of **60 and above** are automatically accredited as **Provisional Project Engineers**.

Accreditation for Provisional Project Engineers shall only be valid for two (2) years. Within the 2-year validity period, a Provisional Project Engineer may apply for regular accreditation subject to the Criteria for Accreditation as indicated in the succeeding sections of this issuance.

- 1.2 The project engineers who shall apply for regular accreditation shall be classified according to their total score obtained in the evaluation as per the Criteria for Accreditation.

The classification of project engineers shall be as follows:

Total Score	Classification
80 & above	Project Engineer II
60 – 79	Project Engineer I

2.0 CRITERIA FOR ACCREDITATION

The following criteria shall be applied in the evaluation for the regular accreditation of Project Engineers.

a.	Education and Eligibility	Pass/Fail
b.	Accreditation Examination	35 points
c.	Training and Experience	35 points
	- Training	10 points
	- Experience	25 points
d.	Performance Evaluation	<u>30 points</u>
	Total	100 points



2.1 EDUCATION AND ELIGIBILITY

The applicant must be registered and licensed Civil Engineer, including foreign applicant. A certificate of registration/license with professional identification card or a Special Temporary Permit with professional temporary identification card all issued by the Professional Regulation Commission (PRC) shall be required from foreign engineers.

2.2 ACCREDITATION EXAMINATION 35 points

The rating for this criterion shall be based on the result of the examination administered to Contractors' and Consultants' Project Engineers. The passing score shall be **60** to meet the initial criterion of the accreditation.

The raw score obtained in the examination shall be multiplied by the factor weight of 35% to obtain the earned points for this criterion.

2.3 TRAINING AND EXPERIENCE 35 points

Training and experience shall be evaluated as follows:

2.3.1 Training 10 points

The rating for this criterion shall be based on the relevant/equivalent trainings attended by the project engineer. The relevant/equivalent trainings and their corresponding points are as follows:

a. Planning, Design, Construction Methods & Techniques 4 points

Credit one (1) point for any four (4) equivalent trainings related to the construction aspect of project implementation as indicated in Annex "A", to obtain the total points, which shall not exceed 4 points.

b. Materials Quality Control 4 points

Credit two (2) points for completing the Materials Quality Control in Project Implementation (or its equivalent) and another one (1) point each for any two (2) equivalent trainings related to the quality control in Annex "A", to get the total points, which shall not exceed 4 points.

c. Project Management and Supervision 2 points

Credit one (1) point each for any two (2) trainings on Project Management (or its equivalent) as shown in Annex "A", to get the total points, which shall not exceed 2 points.



Only relevant topic/training listed in Exhibit "A" that satisfies contents and corresponds to the number of training hours duration shall be given credit.

2.3.2 Experience

25 points

The rating for this criterion shall be based on:

- a) The number of projects handled by the applicant in a capacity as Project Manager, Project Engineer, Materials Engineer or Resident Engineer.
- b) The number of years that the applicant has been handling projects as Project Manager, Project Engineer, Materials Engineer or Resident Engineer.

Experience shall be rated as follows:

- a. Number of Contracts Handled Corresponding to Costs, 10 maximum points

Contract Cost	≤ 50M	> 50M to 200M	> 200M to 500M	> 500M	Points
Number of Contracts	1-5	1-3			4
	6-10	4-6	1-2		5
	11-15	7-9	3-4	1	6
	16-20	10-12	5-6	2	7
	21-25	13-15	7-8	3	8
	26-30	16-18	9-10	4	9
	More than 30	More than 18	More than 10	More than 4	10 (maximum)

Points for this criterion shall be the highest point earned based on the number of contracts per cost range of the above table.

Example:

Contract Cost	No. of Contracts	Points
≤50M	= 3	= 4
>50M to 200M	= 5	= 5
>200M to 500M	= 8	= 8
>500M	= 1	= 6

Highest point earned = 8 points

- b. Aggregate number of years handling contracts, 15 maximum points

- 1 point per year, but the total shall not exceed 15 points



Submission of supporting documents as proofs/evidences for relevant experiences as Project Manager, Project Engineer, Materials Engineer or Resident Engineer such as certification from the head of office with job description, memorandum designation, project billings/vouchers or any other documents bearing the Name of Project, Contract Amount, Start and Completion Dates and applicant's name and signature is required for evaluation of work experience. All documents submitted as evidence for this criterion including certificates of trainings/seminars attended shall be certified as true copies of the original documents by the Authorized Managing Officer of the contractor/consultant.

2.4 PERFORMANCE

30 points

The rating for this criterion shall be based on the performance evaluation of the Contractors'/Consultants' Project Engineer in the actual implementation of on-going or completed DPWH projects.

One (1) to three (3) projects handled by the applicant in a capacity as Project Manager, Project Engineer or Materials Engineer of any category which are included during the project assessments/inspections shall be nominated for performance evaluation. The project/s inspected shall be rated for its compliance to the quality and/or workmanship of completed works whichever is available during implementation.

The rating for this criterion shall be obtained by multiplying the performance rating by the weight factor of 30%. The performance rating shall be based on the rating of one (1) project divided by three (3), or sum of ratings of two (2) or three (3) projects divided by three (3).

2.4.1 Report on the Quality of the Completed Works

The rating for this criterion shall be on a per item of work basis done completely in accordance with the approved plans and specifications reflecting quality of workmanship applied. An item of work found to have defects shall be rated commensurately with the gravity of defects such as less serious defect, serious defect and very serious defect as stipulated in Department Order No. 102, series of 2016.

The rating of each evaluated project shall be obtained from the rating of A.3-Quality of the Completed Works from the QAU reports.

2.4.2 Evaluation Report on the Workmanship Applied

The rating for this criterion shall be based on the workmanship aspect of the quality of work which are verifiable in accordance to the approved plans and specifications. In rating this aspect, efficiency of methodology shall be considered as per Amended CPES Implementing Guidelines for Infrastructure Projects as Approved by NEDA pursuant to IRR of RA 9184.



The rating of each evaluated project shall be obtained from the rating of Workmanship from the CPES evaluation reports.

Example of Performance Evaluation:

A. Quality of Completed Works, A.3 (50 pts.)

Project		A.3 Rating
Project (1)	=	45
Project(1) / 3	=	15

$$\begin{aligned}\text{Performance Rating} &= 15 \times \text{Factor (2.0)} \times 30\% \\ &= 30 \times 30\% \\ &= 9.0\%\end{aligned}$$

B. Workmanship (On-Going Projects, 40 pts.) (Completed Projects, 50 pts.)

b.1 On-Going Project (40 pts.)

Project		Rating
Project (1)	=	35
Project (2)	=	35
Total	=	70
Total / 3	=	23.33

$$\begin{aligned}\text{Performance Rating} &= 23.33 \times \text{Factor (2.5)} \times 30\% \\ &= 58.33 \times 30\% \\ &= 17.5\%\end{aligned}$$

b.2 Completed Project (50 pts.)

Project		Rating
Project (1)	=	45
Project (2)	=	40
Project (3)	=	45
Total	=	130
Average	=	43.33

$$\begin{aligned}\text{Performance Rating} &= \text{Average} \times \text{Factor (2.0)} \times 30\% \\ &= 86.67 \times 30\% \\ &= 26\%\end{aligned}$$



3.0 ASSIGNMENT OF CONTRACTORS'/CONSULTANTS' PROJECT ENGINEERS TO DPWH PROJECTS

Only accredited project engineers may be assigned to DPWH projects, subject to the following limits of assignment:

For Regional/District Offices

Classification	Limits of Assignment
PE II	Ten (10) contracts located within the same region for simultaneous assignments, but with an aggregate cost of Php 1.5B
PE I	Ten (10) contracts located within the same region for simultaneous assignments, each costing not more than Php 150M, but with an aggregate cost of Php 1.0B
Provisional Project Engineer	Ten (10) contracts located within the same region for simultaneous assignments, each costing not more than Php 100M, but with an aggregate cost of Php 500M

For Unified Project Management Offices (UPMOs)

Classification	Limits of Assignment	
	Maximum Number of Contracts	Maximum Cost of Project
PE II	1	>500M
PE I	2	500M

4.0 PROCEDURE FOR ACCREDITATION

Process flow in Accreditation of Contractors' and Consultants' Engineers is shown in Annex "B".

4.1 Who may be Accredited

All registered and licensed civil engineers of the contractors and consultants, including foreigners, who are assigned as project engineers to DPWH-implemented projects, may apply for accreditation and must pass the given accreditation examination.

All government engineers are prohibited from applying for the accreditation while still employed by the government including those under the NGAs, SUCs, GOCCs, LGUs, GFIs, and other governmental organizations.



4.2 Accreditation Requirements

All applications for the scheduled accreditation examination must be submitted to the Bureau of Quality and Safety (BQS) thru the Chief of the Construction Division of any DPWH Regional Office, for validation and evaluation together with the following documents:

- a. Duly accomplished **Application Form for Examination** that can be downloaded at the DPWH website (www.dpwh.gov.ph/dpwh/business/index) entitled Application Form for Examination for Accreditation of Contractors' and Consultants' Project Engineers or can be secured from any DPWH Regional Office thru the Construction Division.
- b. One (1) passport size photograph on a white background pasted in the application form.
- c. Certified true copy of PRC ID as registered and licensed Civil Engineer for local engineers and certificate of registration/license with professional identification card or a Special Temporary Permit with professional temporary identification card all issued by PRC for foreign engineers.

For passers of the accreditation examination, an outright Provisional Project Engineer will be issued thru a Department Order. For those who wish to apply for regular accreditation, application for accreditation shall be submitted to the Bureau of Quality and Safety (BQS) together with the following documents:

- a. Duly accomplished **Application Form for Accreditation** that can be downloaded at the DPWH website (www.dpwh.gov.ph/dpwh/business/index) entitled Application Form for Accreditation of Contractors' and Consultants' Project Engineers.
- b. All attachments required under Section 2.3 for Training and Experience, of this guideline.
- c. One (1) to three (3) nominated project/s inspected by QAU or CPES and rated for its compliance to quality and/or workmanship of completed works.

4.3 Accreditation Examination

The following conditions shall be strictly complied in the processing of application for examination:

- a) An accreditation examination shall be administered to all qualified applicants. At least two (2) examinations per year to be held every first Saturday of February and July will be given simultaneously in Luzon, Visayas and Mindanao;



- b) Applicants who failed the given examination may apply again and take the examination until he/she passes. However, applicants who applied but failed to take the examination three (3) times without acceptable justification shall be perpetually barred from taking the examination;

4.4 Issuance of Certificate of Accreditation

- a) A Certificate of Accreditation will be issued to all applicants who will meet the accreditation criteria.
- b) The Certificate of Accreditation, unless revoked or suspended for cause, shall be valid for three (3) years from the date it was issued, and shall be renewed thereafter.

The accredited Contractors'/Consultants' Project Engineer should file his application for renewal of accreditation certificate personally by presenting valid PRC ID and other government issued ID cards for authentication for local engineers and certificate of registration/license with professional identification card or a Special Temporary Permit with professional temporary identification card all issued by PRC for foreign engineers.

All requests for renewal of accreditation certificate must be addressed to the Director, Bureau of Quality and Safety (BQS) together with the following requirements:

- b.1) Request letter of the concerned Project Engineer signifying intention to renew his certificate of accreditation.
- b.2) Original/Renewed Certificate of Accreditation with expired validity date.
- b.3) Certification of Employment from the current employer, if there is any, indicating the date of employment and/or affidavit attesting that the applicant is not connected or employed with any government office.
- b.4) Photocopy of valid PRC ID and other government issued ID cards
- b.5) Duly accomplished **Application Form for the Renewal of Certificate** that can be downloaded at the DPWH website (www.dpwh.gov.ph/dpwh/business/index) entitled Application Form for the Renewal Certificate for Accreditation of Contractors' and Consultants' Project Engineers.



4.5 Change in Accreditation Status

- a) An accredited DPWH Project Engineer who retired or resigned from Office may be considered as an accredited Contractor's/Consultant's Project Engineer upon his request, subject to the approval of the Secretary, corresponding to the following rank:

DPWH Accreditation Classification	Proposed Contractors' / Consultants' Accreditation Classification
Project Engineer III	Project Engineer II
Project Engineer II	Project Engineer I
Project Engineer I	Project Engineer I
Junior Project Engineer	Project Engineer I

However, newly retired or resigned DPWH engineer should observe the one (1) year prohibition to practice his profession in private companies that conduct business with DPWH as provided under Section 7 (Prohibited Acts and Transactions) of Republic Act No. 6713.

- b) Requests for change in classification status from accredited DPWH Project Engineer to Contractor's/Consultant's Project Engineer must be submitted to the Bureau of Quality and Safety (BQS) together with the following requirements:

b.1) Request letter from the concerned Project Engineer.

b.2) For resigned Project Engineer:

- Acceptance of Resignation from the appointing authority (certified true copy)

b.3) For retired Project Engineer, certified true copies of any of the following:

- approved clearance from the Implementing Office
- GSIS clearance
- Ombudsman clearance (if applicable)



5.0 TESTIMONIAL ACCREDITATION

Former non-accredited DPWH engineers who held the following positions during their tenure of service are entitled for testimonial accreditation:

5.1 CLASSIFICATION OF PROJECT ENGINEERS

5.1.1 Outright accreditation as Project Engineer II shall be given to the following former DPWH Heads of Office who were able to satisfy the initial requirements for testimonial accreditation:

- a. Project Manager IV
- b. District Engineer

5.1.2 Accreditation shall be given to the following former DPWH Heads of Office who were able to satisfy the initial requirements for testimonial accreditation:

- a. Project Manager I to III
- b. Assistant District Engineer
- c. Engineer IV and Division Chief of DPWH, Regional Office from:
 - Maintenance Division
 - Construction Division
 - Quality Assurance and Hydrology Division
- d. Engineer IV and V of DPWH, Central Office from:
 - Bureau of Construction
 - Bureau of Design
 - Bureau of Maintenance
 - Bureau of Research and Standards
 - Bureau of Quality and Safety
- e. Section Chief of DPWH, District Engineering Office from:
 - Maintenance Section
 - Construction Section
 - Quality Assurance Section

The afore-mentioned applicants shall then be evaluated based on the criteria rating system by obtaining the total score in education and eligibility, training and experience to be classified according to their total score as follows:

Total Score	Classification
80 and above	Project Engineer II
60 - 79	Project Engineer I



5.2 CRITERIA FOR TESTIMONIAL ACCREDITATION

The following criteria shall be applied in the evaluation of testimonial accreditation of Contractors' and Consultants' Project and Materials Engineers.

5.2.1 Initial Requirements

Initial requirements are Pass/Fail criterion. Applicants who failed any of these shall be disqualified outright:

- a. The applicant must be a duly licensed and registered Civil Engineer (R.A. 1080).
- b. The applicant must possess the following experience:
 - b.1 20 years minimum experience in government service; and
 - b.2 10 years of experience relevant to project implementation, evaluation and assessment in operations and/or technical services.

Proofs such as Department Orders, Special Orders, service records, and memorandum/directive of related activities must be submitted to serve as basis for the evaluation.

Former DPWH Heads of Office stated under Section 5.1.1 of these guidelines who were able to satisfy all the initial requirements pursuant to Section 5.2.1 shall be given an outright testimonial accreditation, classified as Project Engineer II.

5.2.2 Accreditation Criteria

Upon compliance with Section 5.2.1 provisions of the initial requirements for former Heads of Office who held positions cited under Section 5.1.2 of this guidelines, the Bureau of Quality and Safety (BQS) shall then evaluate the applicants' qualifications based on the following criteria:

- | | |
|--|-----------|
| a. Educational Attainment, Graduate Level Degree | 15 points |
| b. Training | 15 points |
| c. Experience | 70 points |

Total	100 points
--------------	-------------------



5.3 CRITERIA REQUIREMENTS

5.3.1 Educational Attainment, Graduate Level Degree, 15 points

Relevant Master's Degree – 10 points
Relevant Doctorate Degree – 5 points

5.3.2 Training, 15 points

The rating for this criterion shall be based on the relevant trainings attended as Field Engineer related to construction aspect of project implementation, materials quality control and project management and supervision corresponding to maximum points as follows:

Planning, Design, Construction Methods and Techniques – 8 points
Materials Quality Control – 5 points
Project Management and Supervision – 2 points

Only relevant topic/training listed in Exhibit "A" that satisfies contents and corresponds to the number of training hours duration shall be given credit.

5.3.3 Experience, 70 points

a. For Project Supervision Experience, 20 points

This refers to the number of years of project supervision in a capacity as a Field Engineer and/or as a Quality Assurance Unit (QAU)/ Constructors' Performance Evaluation System (CPES) member for project assessment and technical services for DPWH-implemented projects. The rating of **one (1) point per year** for this criterion shall be obtained from any of the following:

- Aggregate number of years of experience as a Field Engineer (Project Manager, Project Engineer, Materials Engineer, Project Inspector or Resident Engineer) in the supervision of projects.
- Number of years of experience in project audits, assessments, validations, evaluations, inspections and investigations of projects as QAU/CPES member.

Submission of proofs/evidences, such as Project Designation Orders (indicating Name of Contract, Contract Amount, Start and Completion Dates) to act as Field Engineer, certification from the head of office with job description, memorandum designation or any other documents, e.g. Statement of Work Accomplished and project billings/vouchers bearing the applicant's signature and authenticated by the head of office, memoranda/directives in any QAU/CPES related activities, UPMO Designation Order to act as Project Manager for UPMO projects are required as basis for evaluation of work experience.



b. For Managerial/Supervisory Experience, 30 points

Aggregate point/s for each year of managerial/supervisory experience shall be credited for applicants with previous managerial and supervisory positions for a maximum of 30 points:

Division Chief, Regional Office	3 points/year
Engineer V, Central Office	3 points/year
District Engineer	3 points/year
Assistant District Engineer	3 points/year
Engineer IV, Central/Regional Office	2 points/year
Section Chief, District Engineering Office	2 points/year

c. Other Experience as Examiner/Resource Speaker, 10 points

Additional points shall be credited for applicants who have served/acted as any of the following:

- Contributor/Examiner in the qualifying examination for accreditation of DPWH Field Engineers and/or Contractors'/Consultants' Project Engineers 5 points
- Resource Person for technical trainings/seminars on construction methodology, materials quality control and project management and other relevant technical trainings for the last ten (10) years in service with a certification from CDD, HRAS of Central Office or HRDS of Regional Offices certifying as Resource Speaker during his rendered service. 5 points

Requests for Testimonial Accreditation must be submitted to the BQS together with the certified copies of latest government service record, diploma or transcript of records for completed doctorate and/or master's course/s, certification from CDD, HRAS of Central Office or HRDS of Regional Offices as a Resource Speaker, memorandum/directive of field work activities, i.e. project supervision/audits/investigations and relevant documents to serve as basis for the evaluation required under Section 5.3 of these guidelines.

The BQS shall evaluate the applicant's qualification and if found acceptable, recommend testimonial accreditation to the Secretary.

Testimonial accreditation for personnel who held third level positions shall be prescribed under a separate issuance.



5.4 DOCUMENTARY REQUIREMENTS FOR ACCREDITATION

The following are the documentary requirements for a one-time application for testimonial accreditation:

- a. Duly accomplished **Application Form for Accreditation**
- b. Certified true copy of valid PRC ID as registered Civil Engineer
- c. Certified true copy of Service Record
- d. Certified true copy of attachments required under Section 5.3 of these guidelines
- e. Certified true copy of any of the following:
 - e.1 Approved clearance from the applicant's former office
 - e.2 GSIS clearance
 - e.3 Ombudsman clearance (if applicable)

6.0 EFFECTIVITY

Implementation of this Order shall be imposed upon approval where only accredited project engineers of the contractors and consultants may be assigned to supervise DPWH projects.



Annex A

RELEVANT/EQUIVALENT TRAININGS WITH THEIR CORRESPONDING POINTS

A. Planning, Design, Construction Methods & Techniques

1. One (1) point each for completing any of the following relevant trainings/seminars:

Planning

- 1.1 Preparation of Plans
- 1.2 Flood Prevention and Mitigation
- 1.3 Planning and Design of Flood Control Structures
- 1.4 Safety in Construction
- 1.5 Subsurface Exploration
- 1.6 Traffic Engineering
- 1.7 Road Safety Engineering
- 1.8 Transportation Engineering

Design

- 1.9 Bridge Design
- 1.10 Computer Aided Design (Civil 3D)
- 1.11 Earthquake Engineering and Infrastructure Rehabilitation
- 1.12 Flood Control and Urban Drainage Design
- 1.13 Geotechnical Engineering
- 1.14 Highway Design
- 1.15 Highway Foundation Investigation and Analysis
- 1.16 Hydrology Seminar
- 1.17 Principles of Bridge Design
- 1.18 Principles of Highway Design
- 1.19 Principles of Highway Location, Survey and Design
- 1.20 River and SABO Engineering
- 1.21 Slope Stability
- 1.22 Structural Design
- 1.23 Surveys and Site Investigation
- 1.24 Building Design

Construction

- 1.25 Construction Methods and Techniques
- 1.26 Bridge and Flood Control Construction
- 1.27 Bridge Assessment, Maintenance and Repair/Rehabilitation
- 1.28 Construction of Ports and Harbors
- 1.29 Construction of Water Supply Project
- 1.30 Labor-Based Technology
- 1.31 Pothole Patching Technology
- 1.32 Quality Assurance Seminar
- 1.33 Road Maintenance and Rehabilitation
- 1.34 Project Quality Assurance



B. Materials Quality Control

1. Two (2) points for completing any of the following relevant trainings/seminars:
 - 1.1 On-the-Job Training on Materials Testing (with duration of 176 hours)
 - 1.2 Materials Quality Control in Project Implementation (with duration of 176 hours)
2. One (1) point each for completing any of the following relevant trainings/seminars which shall not exceed a total of three (3) for testimonial accreditation.
 - 2.1 Materials Quality Control in Project Implementation (with duration of less than 176 hours)
 - 2.2 Materials Testing Procedures
 - 2.3 Materials Engineering and Quality Control
 - 2.4 Soil Engineering
 - 2.5 Asphalt Technology
 - 2.6 Concrete Technology

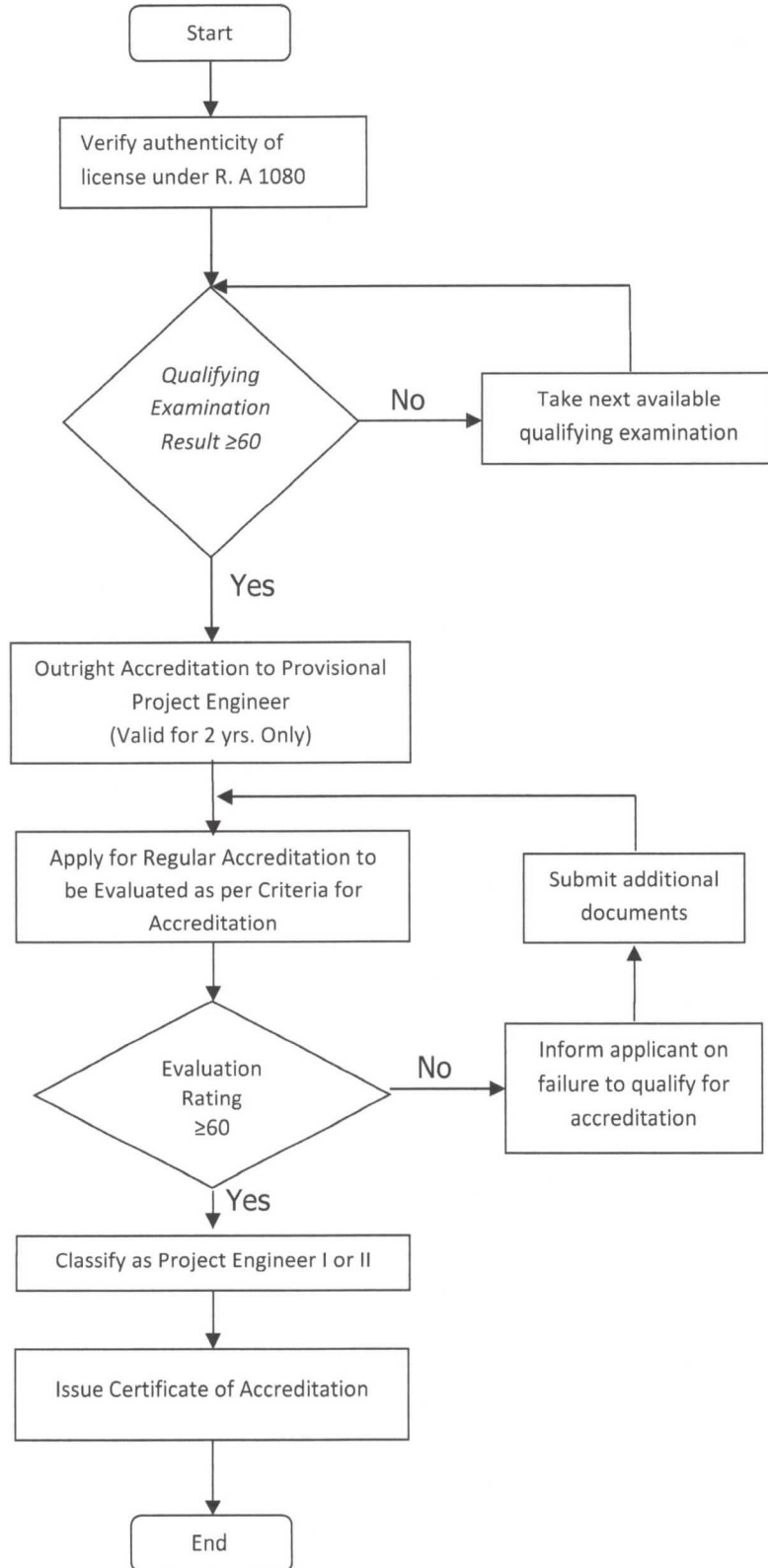
C. Project Management and Supervision

1. Two (2) points for completing Project Management (176 hours). Applicable for testimonial accreditation only.
2. One (1) point each for completing equivalent training on any two (2) of the following trainings/seminars:
 - 2.1 Implementing Rules and Regulation on RA 9184 (Government Procurement Reform Act)
 - 2.2 Project Documentation
 - 2.3 Infrastructure Planning and Programming Procedures
 - 2.4 Construction Supervision and Management
 - 2.5 Construction Planning and Scheduling
 - 2.6 DPWH Project Development and Implementation
 - 2.7 Networking/Scheduling (PERT/CPM or PDM)



ANNEX B

PROCESS FLOW IN ACCREDITATION OF PROJECT ENGINEER





Department of Public Works and Highways

Accreditation of Contractors' and Consultants' Project Engineers

Application Form for Examination

Date of Examination _____

APPLICATION NUMBER

	—				
--	---	--	--	--	--

NAME: _____
(Surname) (First Name) (Middle Name) (Suffix if any)

MAIDEN NAME (if applicable): _____

NATIONALITY: _____ SEX: _____ CIVIL STATUS: _____

HOME ADDRESS: _____

CURRENT POSITION TITLE: _____

CONTRACTOR'S/CONSULTANT'S BUSINESS NAME: _____

CONTRACTOR'S/CONSULTANT'S BUSINESS ADDRESS: _____

BIRTHDATE (mm/dd/yy): _____ E-MAIL ADDRESS: _____

OFFICE TEL. NO.: _____ HOME/MOBILE NO.: _____

PRC LICENSE NO.: _____ VALID UNTIL: _____

PREFERRED EXAMINATION VENUE: ☐ LUZON ☐ VISAYAS ☐ MINDANAO

I certify that the information contained in and attached to this application is accurate. I understand that if any information is determined to be inaccurate, my application will be denied and I will be subjected to disciplinary action.

Recent
passport size
colored photo
on white
background

Applicant's Signature

Date _____



Department of Public Works and Highways

Accreditation of Contractors' and Consultants'

Project Engineers

Application Form for Accreditation

NAME: _____
(Surname) (First Name) (Middle Name) (Suffix if any)

MAIDEN NAME (if applicable): _____

NATIONALITY: _____ SEX: _____ CIVIL STATUS: _____

HOME ADDRESS: _____

CURRENT POSITION TITLE: _____

CONTRACTOR'S/CONSULTANT'S BUSINESS NAME: _____

CONTRACTOR'S/CONSULTANT'S BUSINESS ADDRESS: _____

BIRTHDATE (mm/dd/yy): _____ E-MAIL ADDRESS: _____

OFFICE TEL. NO.: _____ HOME/MOBILE NO.: _____

PRC LICENSE NO.: _____ VALID UNTIL: _____

I certify that the information contained in and attached to this application is accurate. I understand that if any information is determined to be inaccurate, my application will be denied and I will be subjected to disciplinary action.

Recent
passport size
colored photo
on white
background

Applicant's Signature

Date _____

Date _____