

# PROJECT BRIEFER

## NORTH LUZON EAST EXPRESSWAY PROJECT (LA MESA PARKWAYS PROJECT)

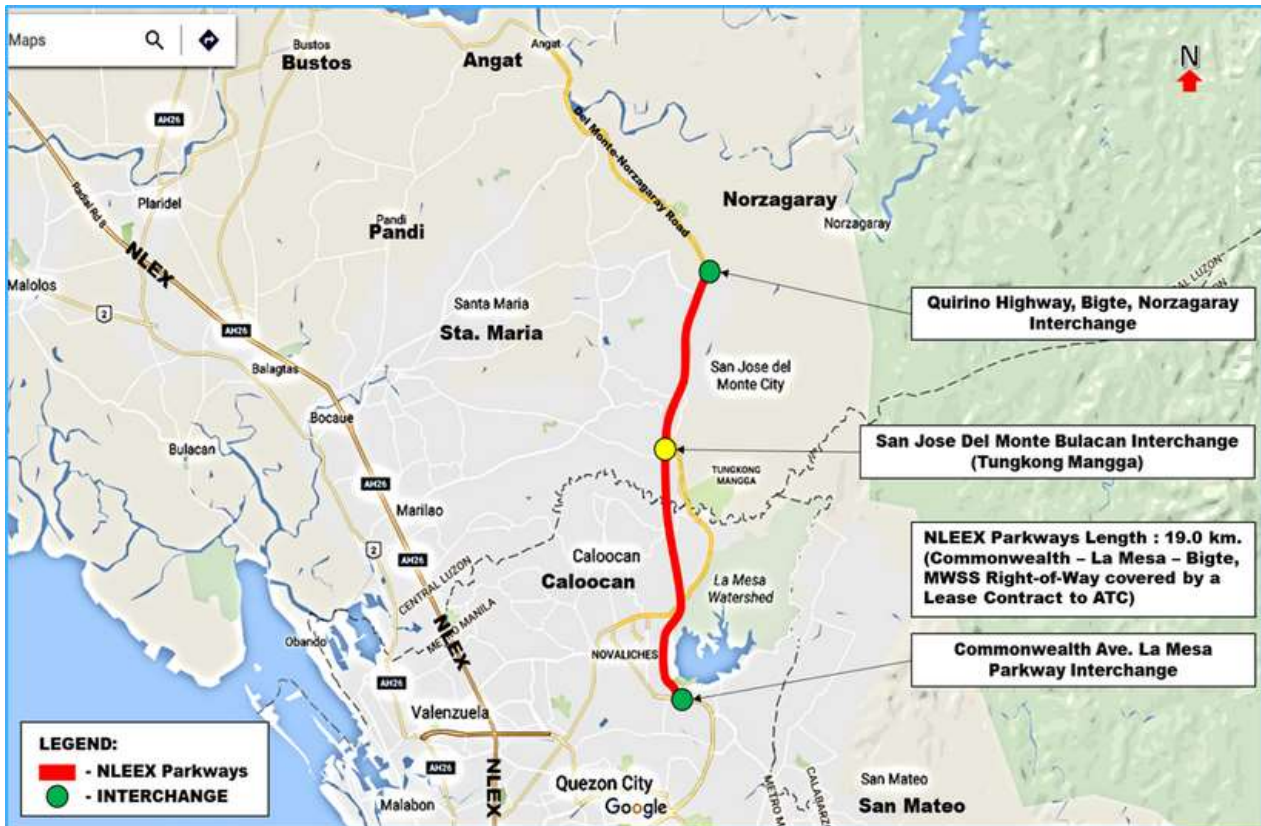
As of March 25, 2025



### PROJECT DESCRIPTION:

An unsolicited project proposal with a length of 19 km. toll road which starts at Commonwealth – La Mesa and ends at Bigte, Norzagaray utilizing the Right-of-Way of the Metropolitan Waterworks and Sewerage System (MWSS) with an interchange at San Jose del Monte, Bulacan (Tungkong Mangga).

### PROJECT ALIGNMENT:



### PROJECT OBJECTIVES:

- Ease the traffic congestion of Northeast Metro Manila while providing a new scenic corridor to Northeast Luzon destination.
- Develop a balanced constructed ecosystem to sustain a positive environmental impact.
- Serve as a water management system, flood and other surface runoff water will be collected and delivered to La Mesa. Using ingenuity and assets on hand, in-pipe turbines will be installed to produce renewable electricity.
- with the assurance to: Provide authorized access, monitoring and routine maintenance to aqueduct fittings along the toll roads and right-of-way; Ensure structural integrity and strategic security of the MWSS underground aqueducts, facilities and accessories.

### CONCESSIONAIRE:

Ausphil Tollways Corporation (ATC)

### ESTIMATED PROJECT COST:

Php 7.80 Billion

### PROJECT STATUS:

- The project will be implemented under Presidential Decree No. 1112 through the Toll Regulatory Board (TRB).