




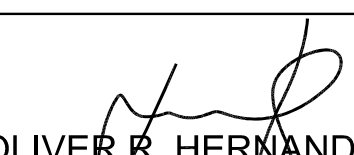
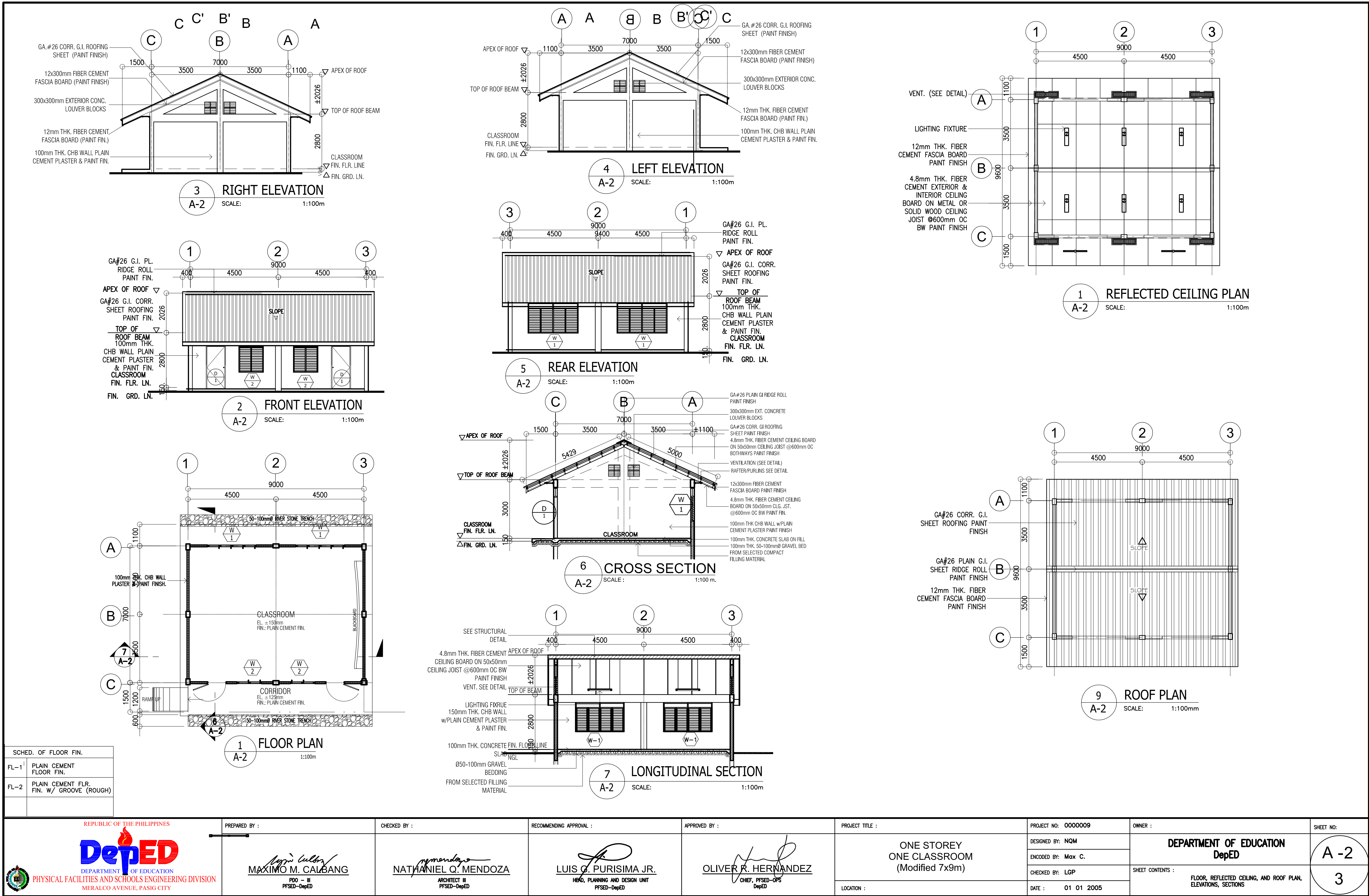
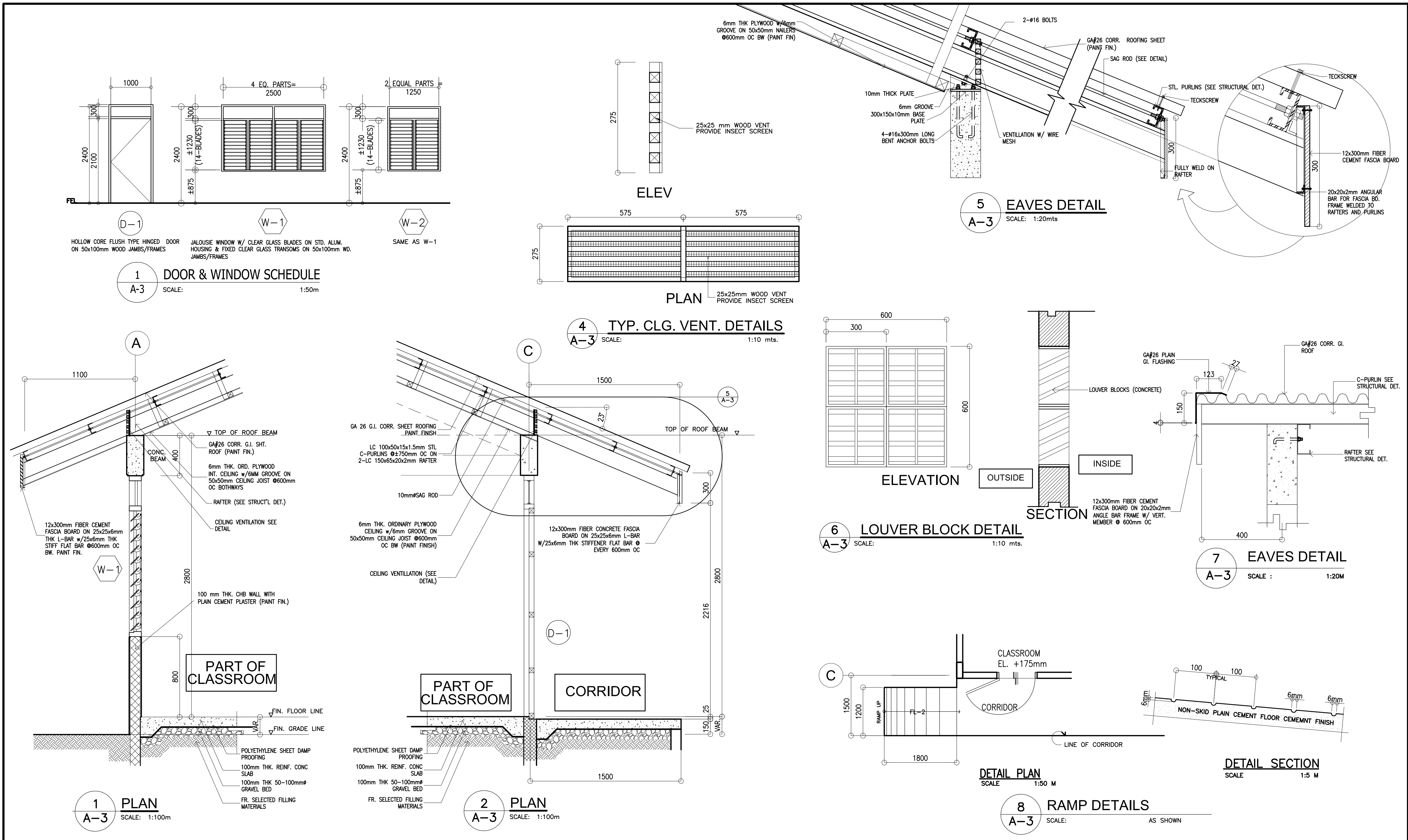







<div></div> <div><div>1</div><div>A-1</div><div>PERSPECTIVE VIEW</div><div>SCALE:NTS</div></div>	TABLE OF CONTENTS		REPUBLIC OF THE PHILIPPINES OFFICE OF THE CITY/MUNICIPAL ENGINEER/BUILDING OFFICIAL					
			DISTRICT/CITY/MUNICIPALITY					
	ARCHITECTURAL A-1 PERSPECTIVE VIEW, TABLE OF CONTENTS  A-2 FLOOR PLAN, ELEVATIONS, ROOF PLAN SECTIONS, REFLECTED CEILING PLAN  A-3 SCHEDULE OF DOOR & WINDOWS, BAY SECTION, DETAIL SECTION, LOUVER BLOCK VENT., RAMP DETAIL	LAND USE & ZONING						
		LINE & GRADE						
			ARCHITECTURAL					
	STRUCTURAL S-1 FOUNDATION PLAN, ROOF FRAMING PLAN FOOTING DETAIL, COLUMN DETAIL, WF-1, RAMP DETAIL  S-2 ELEVATIONS TYPICAL CONNECTION DETAIL		STRUCTURAL					
	ELECTRICAL E-1 ELECTRICAL LAYOUT PLAN, RISER DIAGRAM, LOAD SCHEDULE, GEN. NOTES		SANITARY					
SANITARY		ELECTRICAL						
		MECHANICAL						
<div><div>REPUBLIC OF THE PHILIPPINES</div><div><div>DEPARTMENT OF EDUCATION PHYSICAL FACILITIES AND SCHOOLS ENGINEERING DIVISION MERALCO AVENUE, PASIG CITY</div></div></div>	PREPARED BY : <div><div>MAXIMINO M. CALBANG</div><div>PDO - III PFSED-DepED</div></div>	CHECKED BY : <div><div>NATHANIEL Q. MENDOZA</div><div>ARCHITECT III PFSED-DepED</div></div>	RECOMMENDING APPROVAL : <div><div>LUIS O. PURISIMA JR.</div><div>HEAD, PLANNING AND DESIGN UNIT PFSED-DepED</div></div>	APPROVED BY : <div><div>OLIVER R. HERNANDEZ</div><div>CHIEF, PFSED-OPS DepED</div></div>	PROJECT TITLE : <div>ONE STOREY ONE CLASSROOM 7x9m (MODIFIED)</div> <div>LOCATION :</div>	PROJECT NO: 0000009	OWNER : <div>DEPARTMENT OF EDUCATION DepED</div> <div>SHEET CONTENTS :<div>PERSPECTIVE VIEW TABLE OF CONTENTS</div></div>	SHEET NO: <div><div>A - 1</div><div>3</div></div>



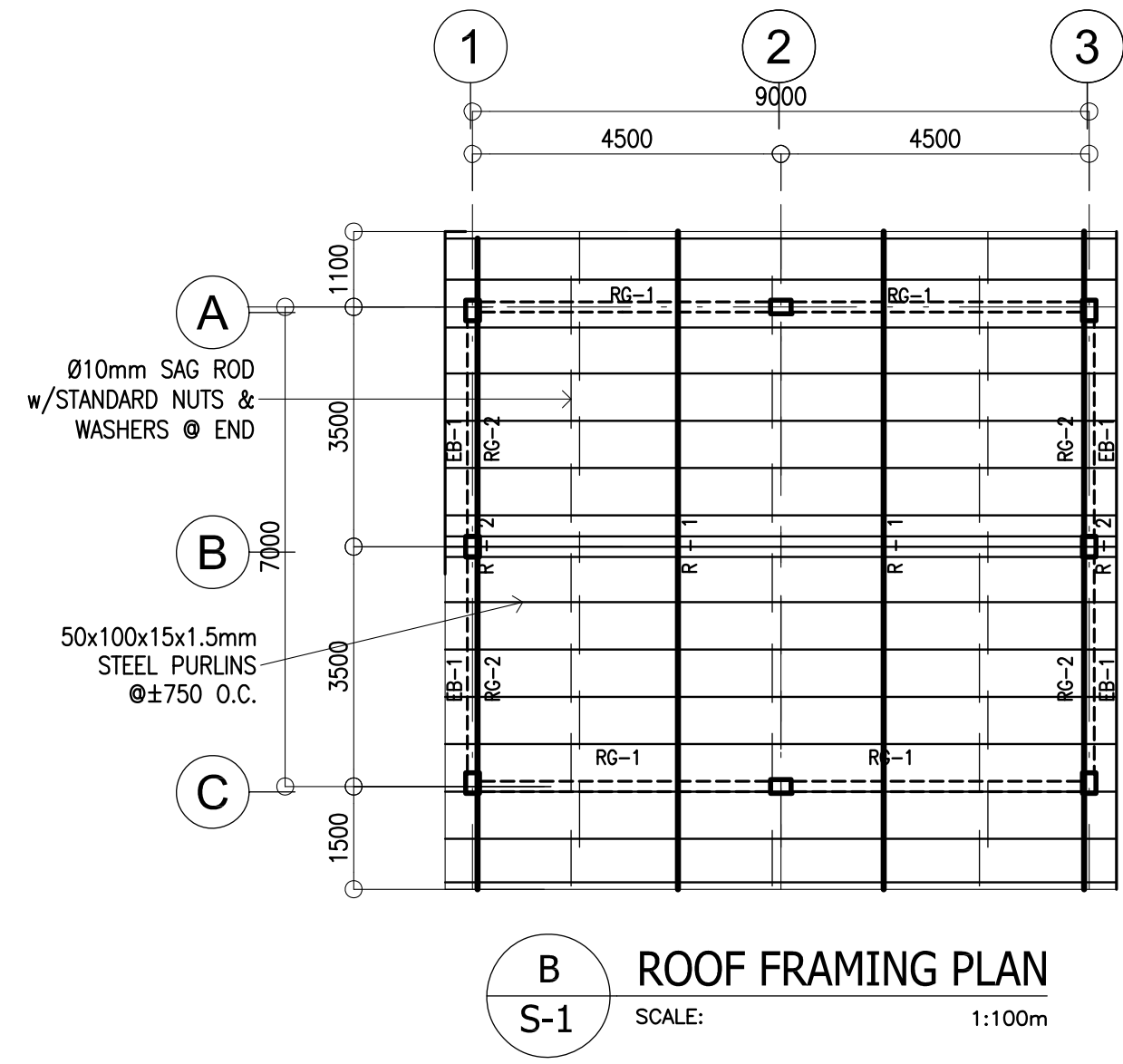
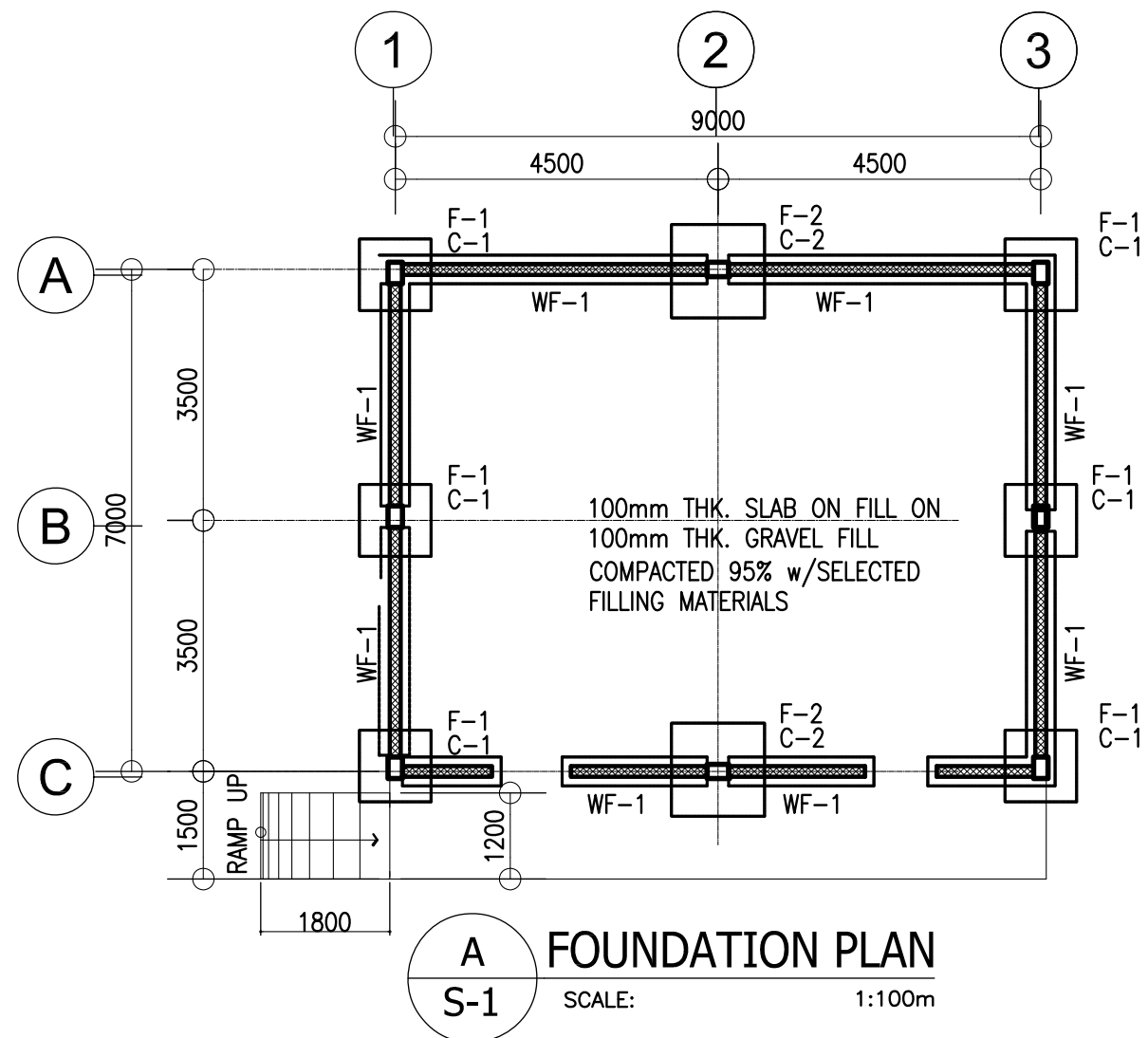




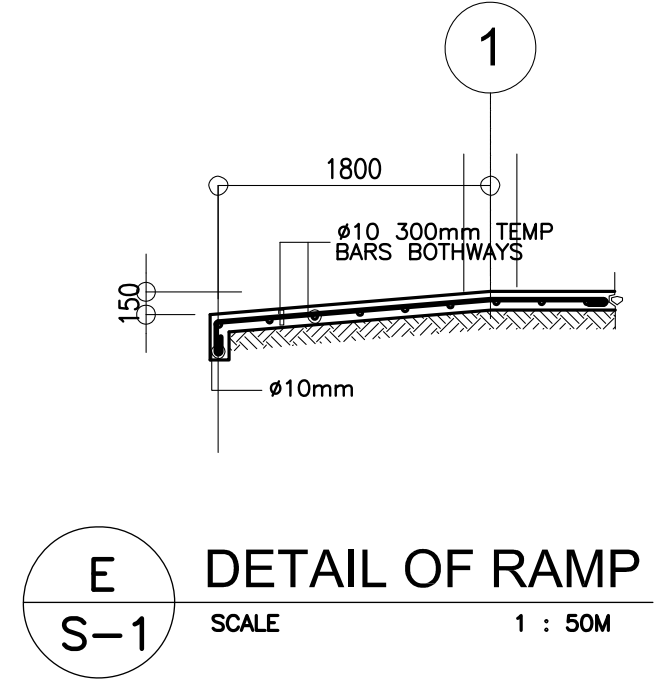
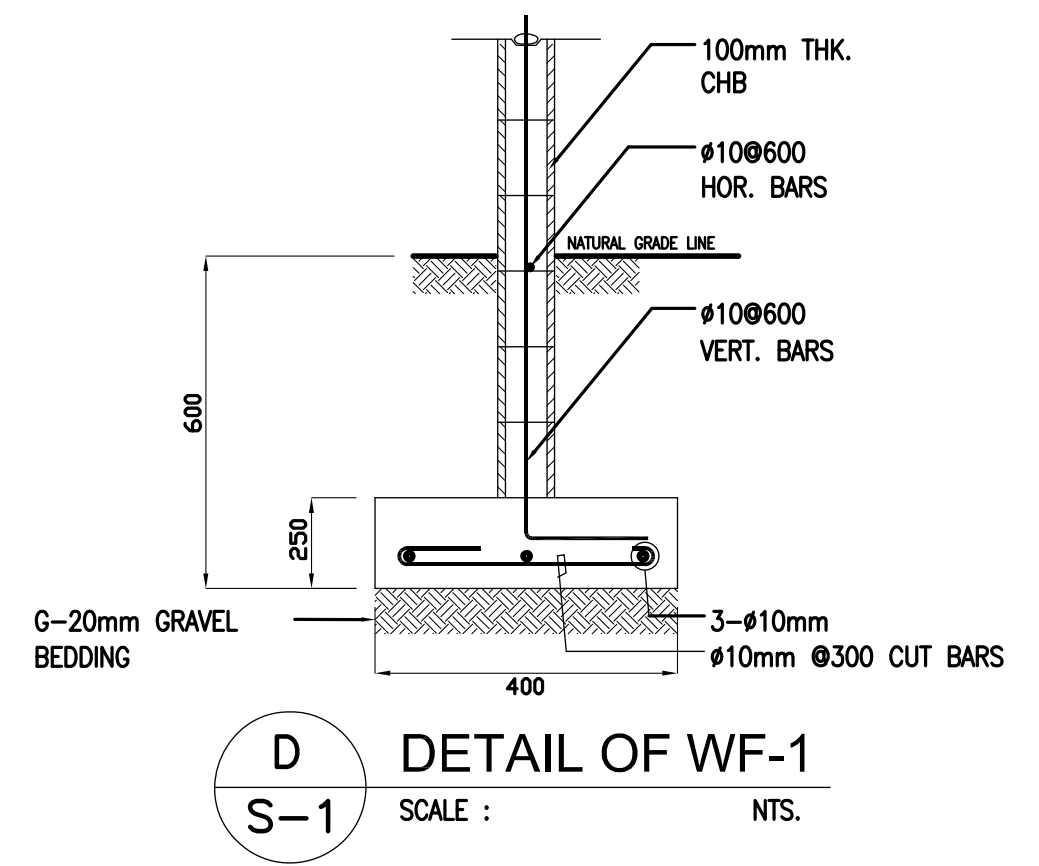
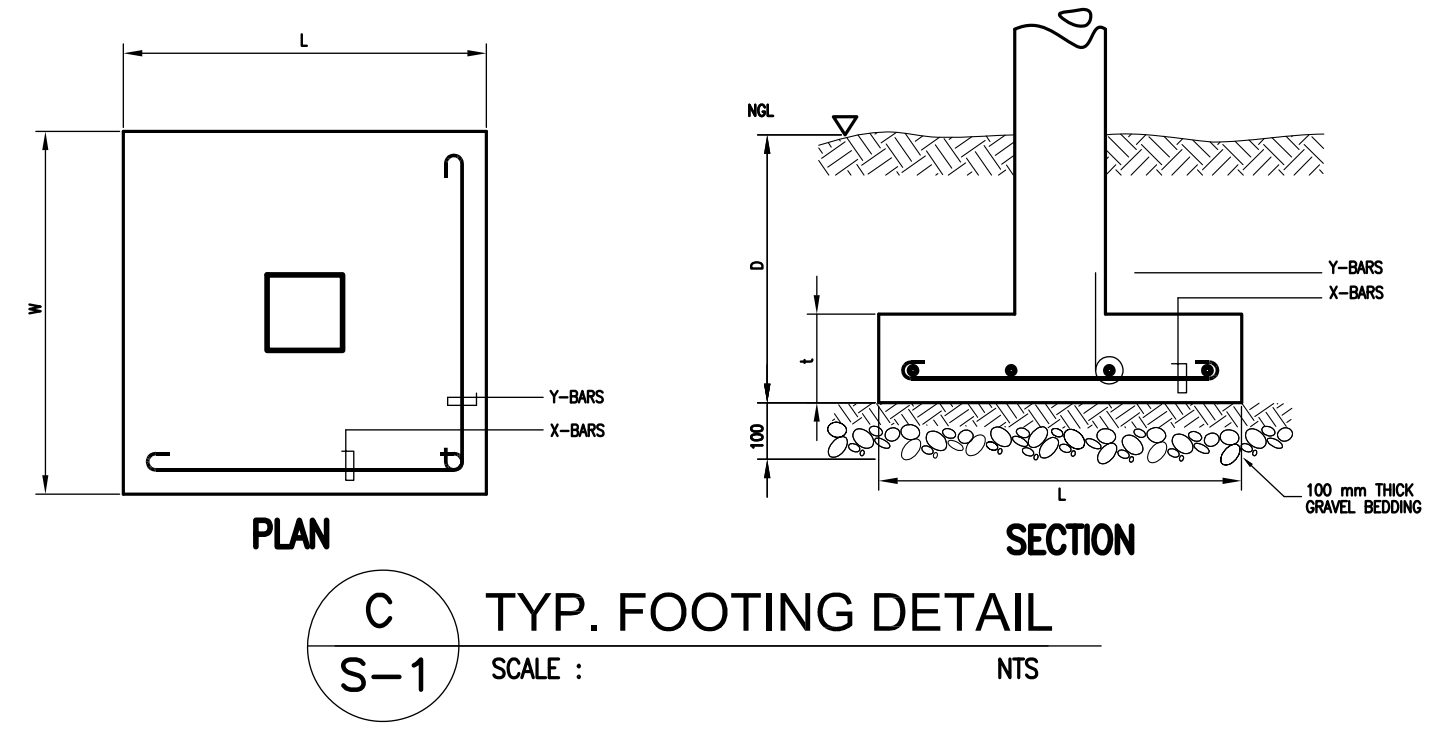


 <b>REPUBLIC OF THE PHILIPPINES</b> <b>DepED</b> DEPARTMENT OF EDUCATION PHYSICAL FACILITIES AND SCHOOLS ENGINEERING DIVISION MERALCO AVENUE, PASIG CITY	PREPARED BY :  <b>MAXIMINO M. CALBANG</b> PDO - III PFSED-DepED	CHECKED BY :  <b>NATHANIEL Q. MENDOZA</b> ARCHITECT III PFSED-DepED	RECOMMENDING APPROVAL :  <b>LUIS G. PURISIMA JR.</b> HEAD, PLANNING AND DESIGN UNIT PFSED-DepED	APPROVED BY :  <b>OLIVER R. HERNANDEZ</b> CHIEF, PFSED-OPS DepED	PROJECT TITLE :  <b>ONE STOREY ONE CLASSROOM (Modified 7x9m)</b>  LOCATION :	PROJECT NO: 0000009 DESIGNED BY: NQM ENCODED BY: Max C. CHECKED BY: LGP DATE : 01 01 2005	OWNER :  <b>DEPARTMENT OF EDUCATION DepED</b>  SHEET CONTENTS : <b>DOOR AND WINDOW SCHEDULE, BAY SECTION, VENT, EAVES AND RAMP DETAIL</b>	SHEET NO:  <b>A - 3</b>  <b>3</b>

NOTE: THIS DRAWING, AS AN INSTRUMENT OF SERVICE IS THE PROPERTY OF PHYSICAL FACILITIES AND SCHOOLS ENGINEERING DIVISION AND AS SUCH MUST NOT BE REPRODUCED OR COPIED IN PART OR IN WHOLE WITHOUT THEIR PERMISSION. ALL DRAWINGS ARE TO BE RETURNED WHEN NO LONGER IN USE.



COLUMN SCHEDULE		
LEVEL	C-1	C-2
FOUNDATION LEVEL TO ROOF LEVEL	<p>MAIN BAR: 4-Ø16mm</p> <p>TIES : Ø10 mm 1@50, 8@75, REST @ 150mm TO CENTER</p>	<p>MAIN BAR: 6-Ø16mm</p> <p>TIES : Ø10 mm 1@50, 8@75, REST @ 150mm TO CENTER</p>



SCHEDULE OF FOOTINGS							
FOOTING MARK	FOOTING DIMENSIONS (mm)				REINFORCEMENT		REMARKS
	LENGTH (L)	WIDTH (W)	DEPTH (D)	THICKNESS (t)	BAR X	BAR Y	
F-1	800	800	1200	250	4 - 16mmØ	4 - 16mmØ	SQUARE FOOTING
F-2	1000	1000	1200	250	4 - 16mmØ	4 - 16mmØ	SQUARE FOOTING

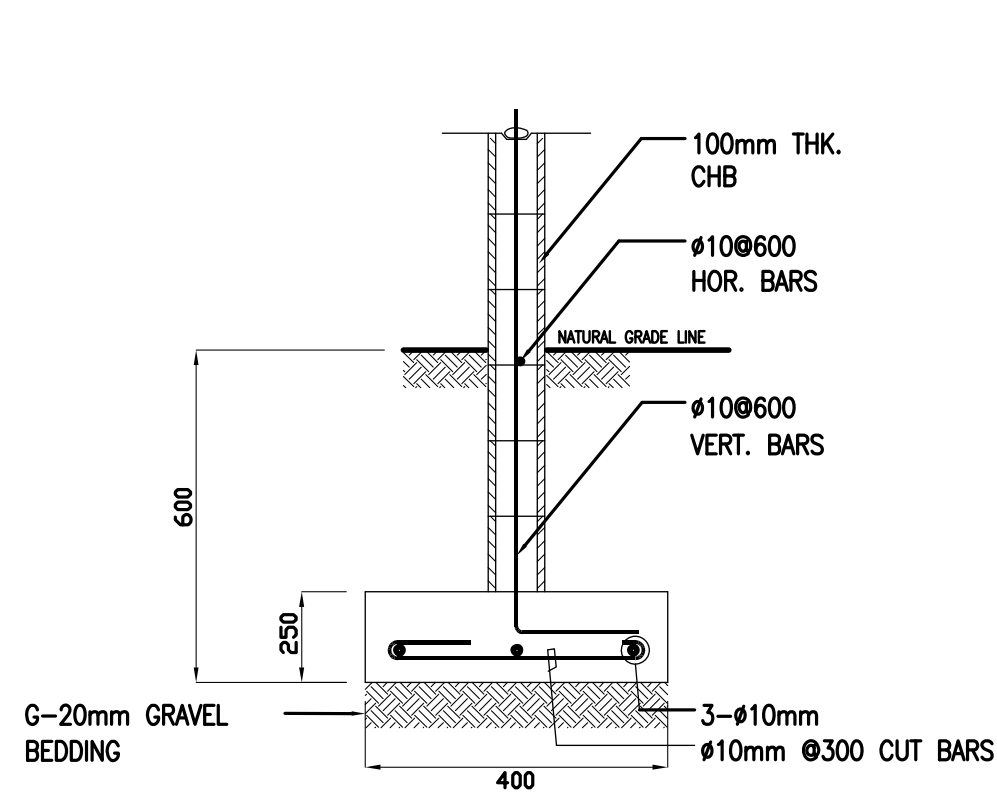
- DESIGN CRITERIA :**
- A. CONCRETE**  
 $f_c' = 20.685 \text{ Mpa ( 3,000 Psi )}$ , minimum compressive strength of concrete a 28 days unless otherwise specified.
  - B. REBAR**  
 $f_y = 275.8 \text{ Mpa ( 40,000 Psi )}$ , minimum yield strength of reinforcing bars unless otherwise specified.
  - C. STRUCTURAL STEEL**  
 $F_y = 248 \text{ Mpa ( 36 Kai )}$ , specified minimum yield strength unless otherwise specified.
  - D. FOUNDATION**  
 $SBP = 95.706 \text{ Kpa ( 2,000 Psf )}$ , was used in the design for all footings. No footing shall rest on fill.

<p>REPUBLIC OF THE PHILIPPINES  <b>DepED</b>          DEPARTMENT OF EDUCATION          PHYSICAL FACILITIES AND SCHOOLS ENGINEERING DIVISION          MERALCO AVENUE, PASIG CITY</p>	PREPARED BY :   <b>MAXIMINO M. CALBANG</b> PEO - III PFSED-DepED	CHECKED BY :   <b>ANTONIA M. ALHAMBRA</b> CIVIL ENGINEER/MASTER PLUMBER PFSED-DepED	RECOMMENDING APPROVAL :   <b>LUIS C. PURISIMA JR.</b> HEAD, PLANNING AND DESIGN UNIT PFSED-DepED	APPROVED BY :   <b>OLIVER R. HERNANDEZ</b> CHIEF, PFSED-OPS DepED	PROJECT TITLE :  ONE STOREY ONE CLASSROOM 7x9m (MODIFIED)  LOCATION :	PROJECT NO: 0000009  DESIGNED BY: AMA ENCODED BY: Max C. CHECKED BY: LGP DATE : 01 01 2005	OWNER :  DEPARTMENT OF EDUCATION DepED  SHEET CONTENTS : FOUNDATION PLAN, ROOF FRAMING PLAN FOOTING DETAIL, COLUMN DETAIL, WF-1, RAMP DET.	SHEET NO:  <div style="border: 1px solid black; border-radius: 50%; width: 40px; height: 40px; display: flex; align-items: center; justify-content: center; margin: 0 auto;"> <div style="border: 1px solid black; border-radius: 50%; width: 20px; height: 20px; display: flex; align-items: center; justify-content: center; margin: 0 auto;">S-1</div> <div style="border: 1px solid black; border-radius: 50%; width: 20px; height: 20px; display: flex; align-items: center; justify-content: center; margin: 0 auto;">2</div> </div>
---	---	--	---	--	---	---	--	--

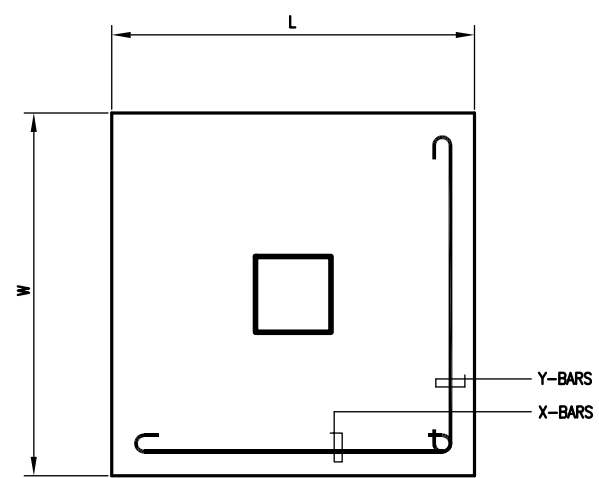
NOTE: THIS DRAWING, AS AN INSTRUMENT OF SERVICE IS THE PROPERTY OF PHYSICAL FACILITIES AND SCHOOLS ENGINEERING DIVISION AND AS SUCH MUST NOT BE REPRODUCED OR COPIED IN PART OR IN WHOLE WITHOUT THEIR PERMISSION. ALL DRAWINGS ARE TO BE RETURNED WHEN NO LONGER IN USE.

REP. ACT 545



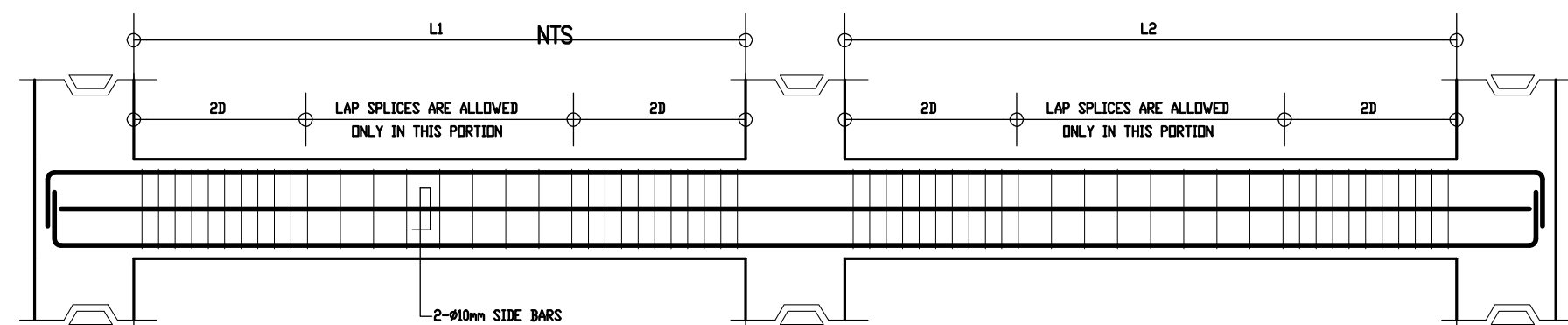


**D**  
S-1  
DETAIL OF WF-1  
SCALE : NTS.

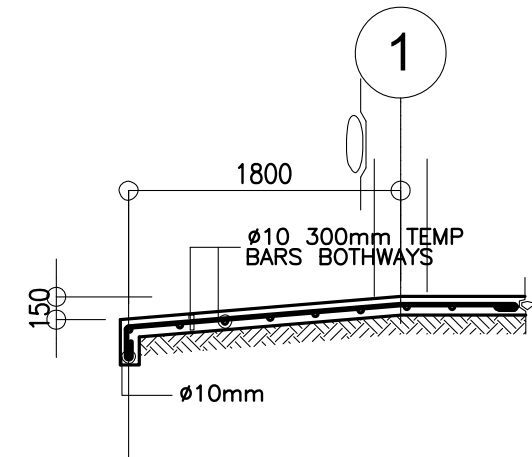


PLAN

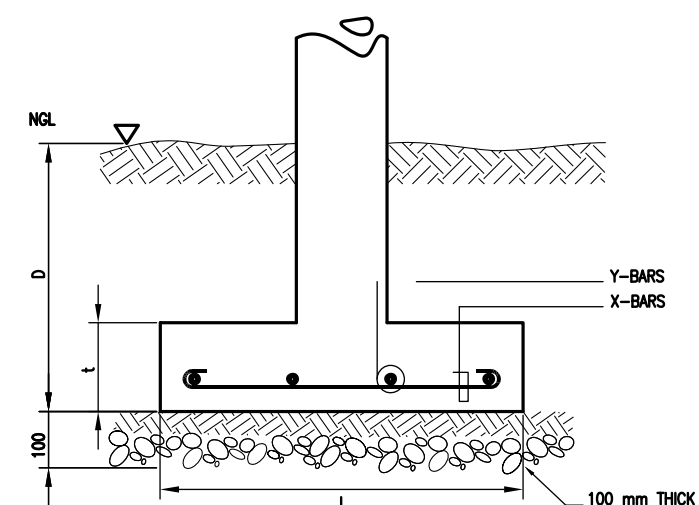
**C**  
S-1  
TYP. FOOTING DETAIL  
SCALE :



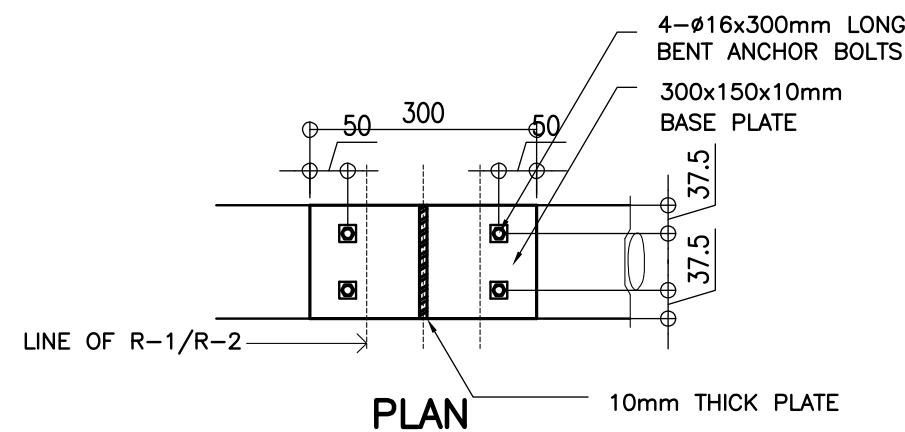
**C**  
S-2  
TYPICAL BEAM ELEVATION



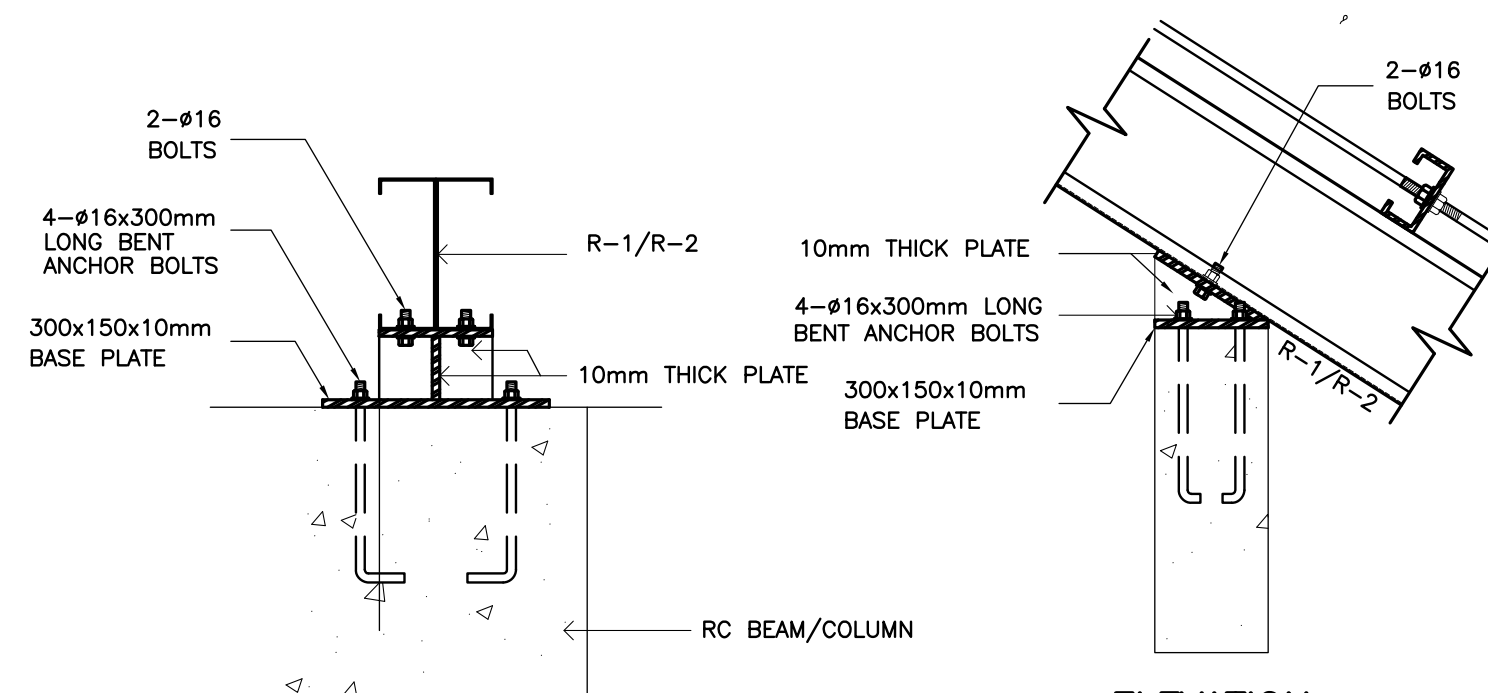
**E**  
S-1  
DETAIL OF RAMP  
SCALE 1 : 50M



SECTION

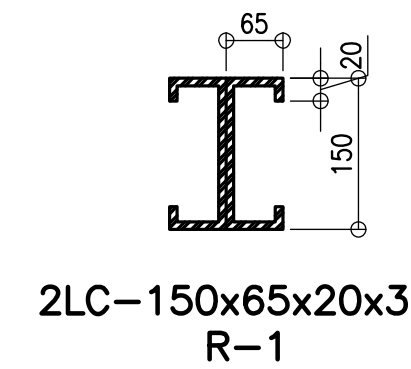


PLAN



ELEVATION

**D**  
S-2  
TYPICAL RAFTER ANCHORAGE DETAIL  
SCALE

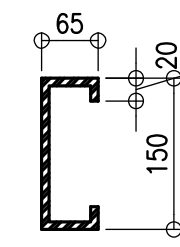


2LC-150x65x20x3  
R-1

**E**  
S-2

DETAIL OF RAFTER

SCALE NTS

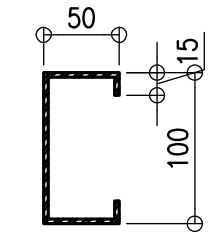


LC-150x65x20x3  
R-2

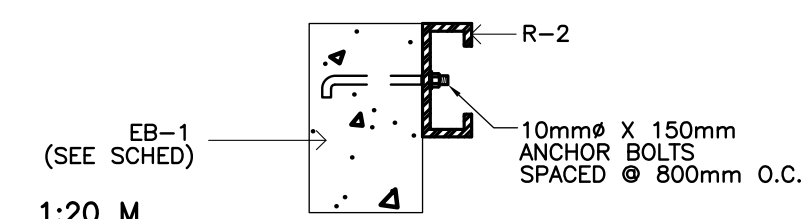
**F**  
S-2

DETAIL OF PURLINS

SCALE NTS



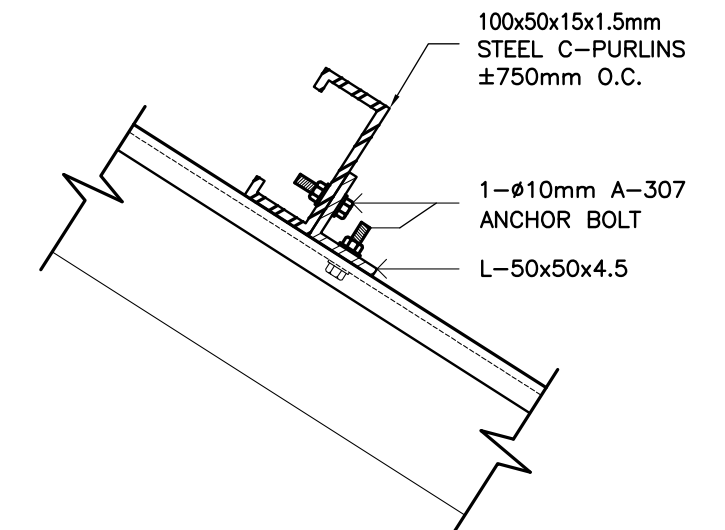
LC-100x50x15x1.5



**1**  
S-2

SECTION DETAIL

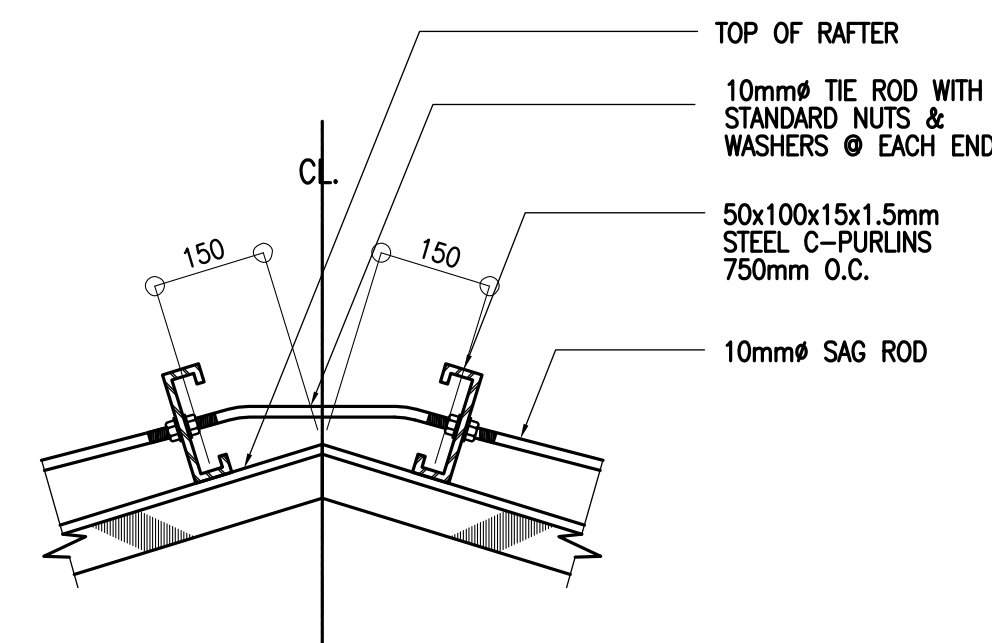
SCALE NTS



**G**  
S-2

PURLIN CONNECTION DET

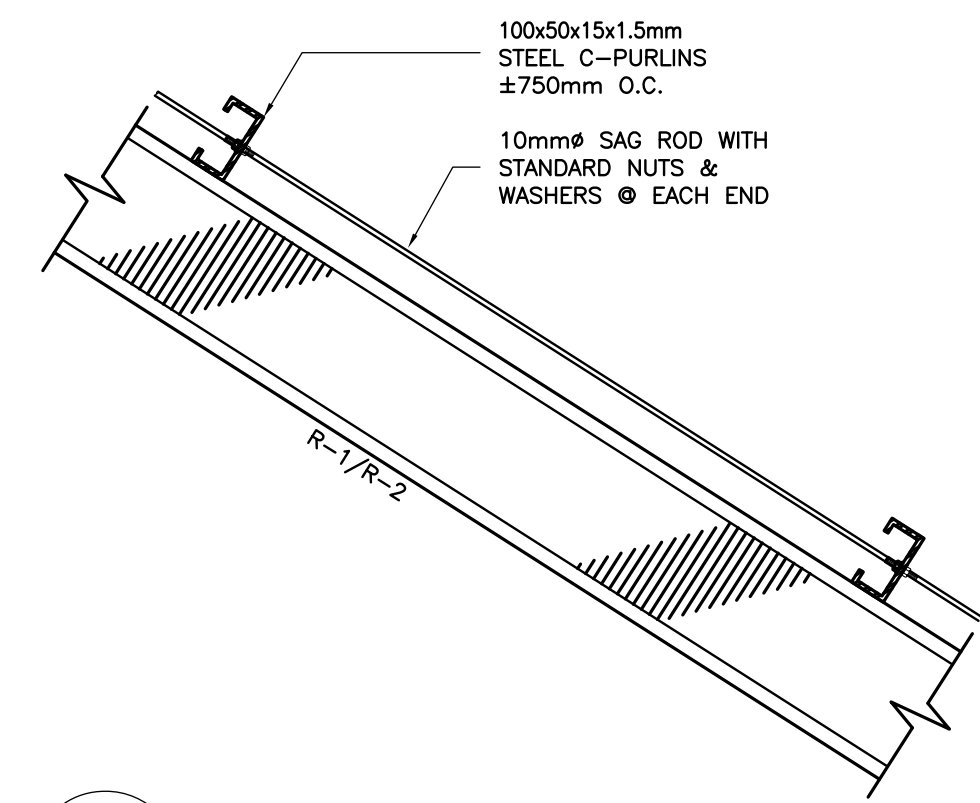
SCALE 1 : 5 M



**H**  
S-2

TIE ROD CONNECTION DET.

SCALE 1 : 10 M



**I**  
S-2

SAG ROD CONNECTION DET.

SCALE 1 : 10 M

B E A M S C H E D U L E											
FLOOR LEVEL	BEAM MARK	BEAM DIMENSIONS ( in / mm )		STEEL REINFORCEMENTS						STIRRUPS Ø10mm (UNLESS NOTED OTHERWISE)	
				REBAR (mm Ø)	LEFT		MID SPAN		RIGHT		
		b	h		TOP	BOTTOM	TOP	BOTTOM	TOP		BOTTOM
ROOF LEVEL	RG-1	150	400	Ø12mm	2	2	2	2	2	2	1Ø50, 8Ø100, REST@200
	RG-2	150	400	Ø12mm	2	2	2	2	2	2	1Ø50, 6Ø100, REST@200
	EB-1	150	250	Ø10mm	2	2	2	2	2	2	1Ø50, REST@200

REPUBLIC OF THE PHILIPPINES  DEPARTMENT OF EDUCATION PHYSICAL FACILITIES AND SCHOOLS ENGINEERING DIVISION MERALCO AVENUE, PASIG CITY		PREPARED BY :  MAXIMINO M. CALBANG PDO - III PFSED-DepED	CHECKED BY :  ANTONIA M. ALHAMBRA CIVIL ENGINEER/MASTER PLUMBER PFSED-DepED	RECOMMENDING APPROVAL :  LUIS C. PURISIMA JR. HEAD, PLANNING AND DESIGN UNIT PFSED-DepED	APPROVED BY :  OLIVER R. HERNANDEZ CHIEF, PFSED-OPS DepED	PROJECT TITLE : ONE STOREY ONE CLASSROOM 7x9m (MODIFIED) LOCATION :	PROJECT NO: 0000009 DESIGNED BY: AMA ENCODED BY: Max C. CHECKED BY: LGP DATE: 01 01 2005	OWNER : DEPARTMENT OF EDUCATION DepED SHEET CONTENTS : ELEVATIONS, BEAM DETAIL & SCHED. TYPICAL CONNECTION DETAIL	SHEET NO:  2
--	--	--	---	--	---	---	--	--	--------------------

NOTE: THIS DRAWING, AS AN INSTRUMENT OF SERVICE IS THE PROPERTY OF PHYSICAL FACILITIES AND SCHOOLS ENGINEERING DIVISION AND AS SUCH MUST NOT BE REPRODUCED OR COPIED IN PART OR IN WHOLE WITHOUT THEIR PERMISSION. ALL DRAWINGS ARE TO BE RETURNED WHEN NO LONGER IN USE.

GENERAL NOTES

1. ALL ELECTRICAL WORKS SHALL COMPLY IN ACCORDANCE WITH THIS PLAN AND SPECIFICATIONS. THE APPLICABLE PROVISIONS OF THE LATEST EDITION OF THE PHILIPPINE ELECTRICAL CODE (PEC). THE RULES AND REGULATION OF THE LOCAL ENFORCING AUTHORITY AND THE REQUIREMENTS OF THE LOCAL POWER COMPANY. ALL ELECTRICAL WORKS SHALL BE UNDER THE IMMEDIATE SUPERVISION OF A DULY REGISTERED ELECTRICAL ENGINEER.
2. THE ELECTRICAL SERVICE POWER IS 1-PHASE, 2-WIRE, 230 V AC, 60 Hz.
3. WIRING METHOD SHALL BE AS FOLLOWS :

a. FEEDERS AND RISERS- RIGID METALLIC CONDUIT

b.LIGHTING, POWER RECEPTACLE  
BRANCH CKT., & AUXILIARY- POLYVINYL CHLORIDE CONDUIT  
SCH. 40
4. ALL WIRES SHALL BE COPPER AND THERMOPLASTIC INSULATED TYPE "THW" UNLESS OTHERWISE INDICATED IN THE PLAN. THE MINIMUM SIZE OF WIRE FOR POWER AND LIGHTING CIRCUIT HOMERUN SHALL BE 3.5mm² AND INSULATED FOR 600 VOLTS. SMALLEST RACEWAY SHALL BE 15mmØ TRADE/NOMINAL SIZE.
5. ALL OUTLET BOXES SHALL BE GALVANIZED GAUGE NO. 16 DEEP TYPE WITH FACTORY KNOCKOUTS.
6. ALL MATERIALS TO BE USED SHALL BE BRAND NEW AND APPROVED TYPE FOR THE PARTICULAR LOCATION AND PURPOSE.
7. GROUNDING SYSTEM SHALL BE PROVIDED TO ALL LIGHTING AND POWER CIRCUIT AS PER PHILIPPINE ELECTRICAL CODE REQUIREMENT.
8. MOUNTING HEIGHT OF WIRING DEVICES SHALL BE AS FOLLOWS :

a. LIGHT SWITCH- 1.20 M ABOVE FINISH FLOOR

b. CONVENIENCE OUTLET- 0.30 M ABOVE FINISH FLOOR.

c. SAFETY SWITCH- 1.80 M ABOVE FINISH FLOOR

CALCULATIONS

1. TOTAL LOAD:

A. LIGHTING OUTLET7 x 100 W= 700 W

B. FAN OUTLET1 x 100 W= 100 W

C. CONVENIENCE OUTLET2 x 180 W= 360 W

TOTAL LOAD= 1160 W

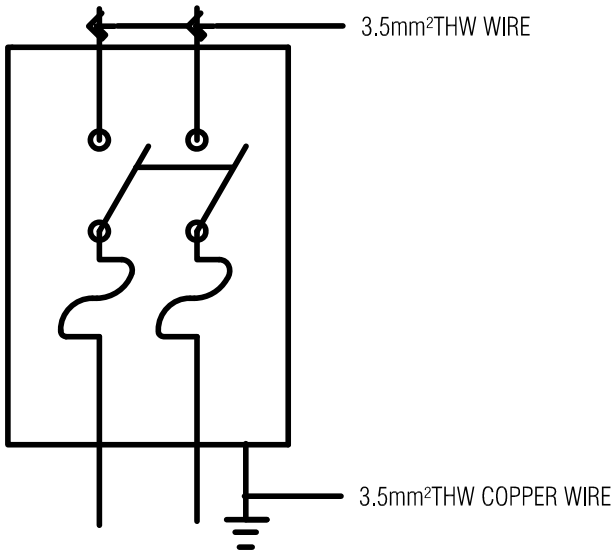
I LOAD1160 / 230= 5.04 A
2. CIRCUIT REQUIREMENT:

USE 20 A 2-WIRE CIRCUIT
3. SERVICE ENTRANCE CONDUCTORS:

USE 2-3.5mm² THW COPPER WIRES
4. SERVICE EQUIPMENT:

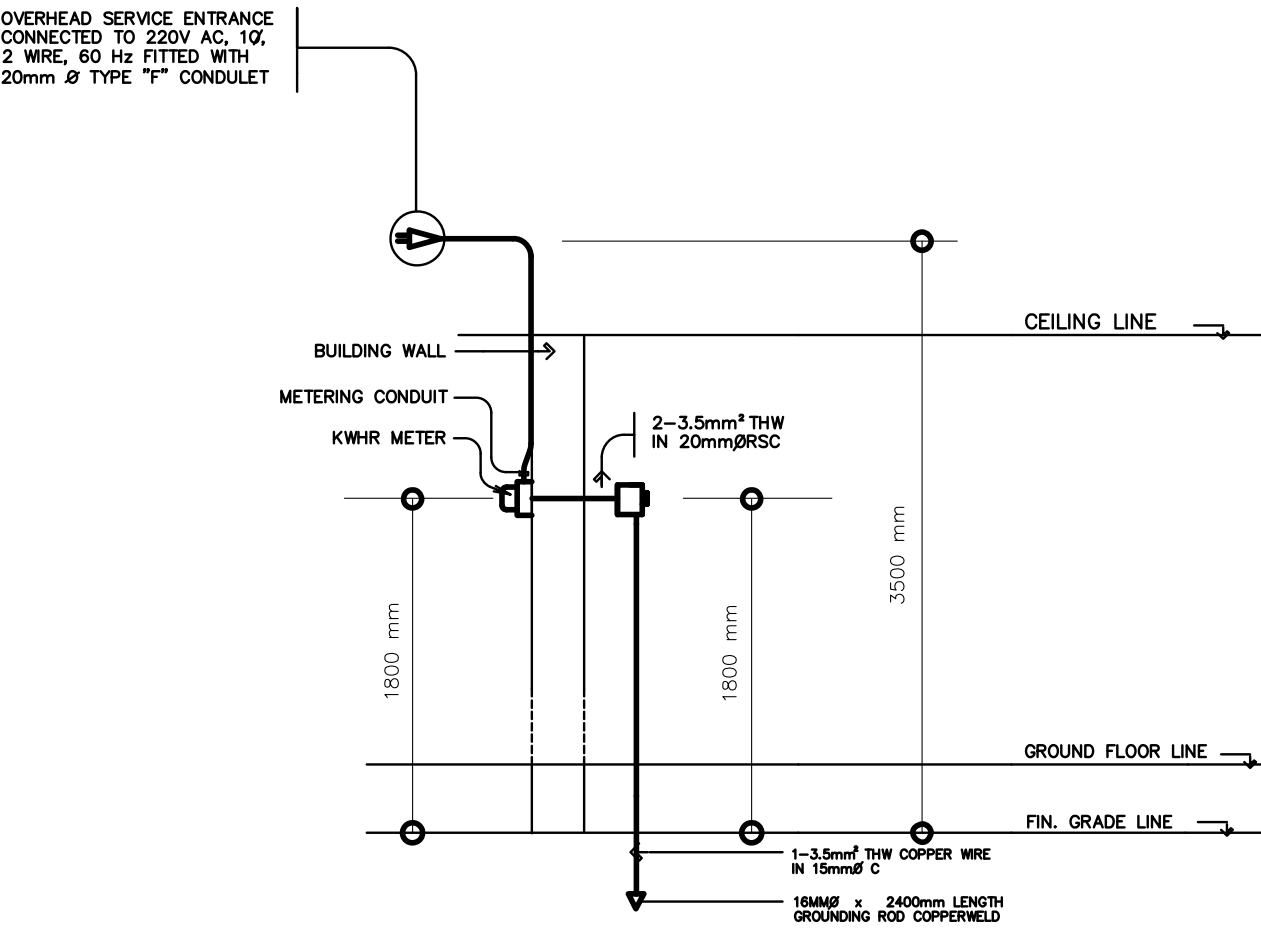
USE 1-30 A, 2PST, 250V SAFETY SWITCH WITH 2-20 A, RENEWABLE FUSES

5. SCHEMATIC DIAGRAM OF SAFETY SWITCH:



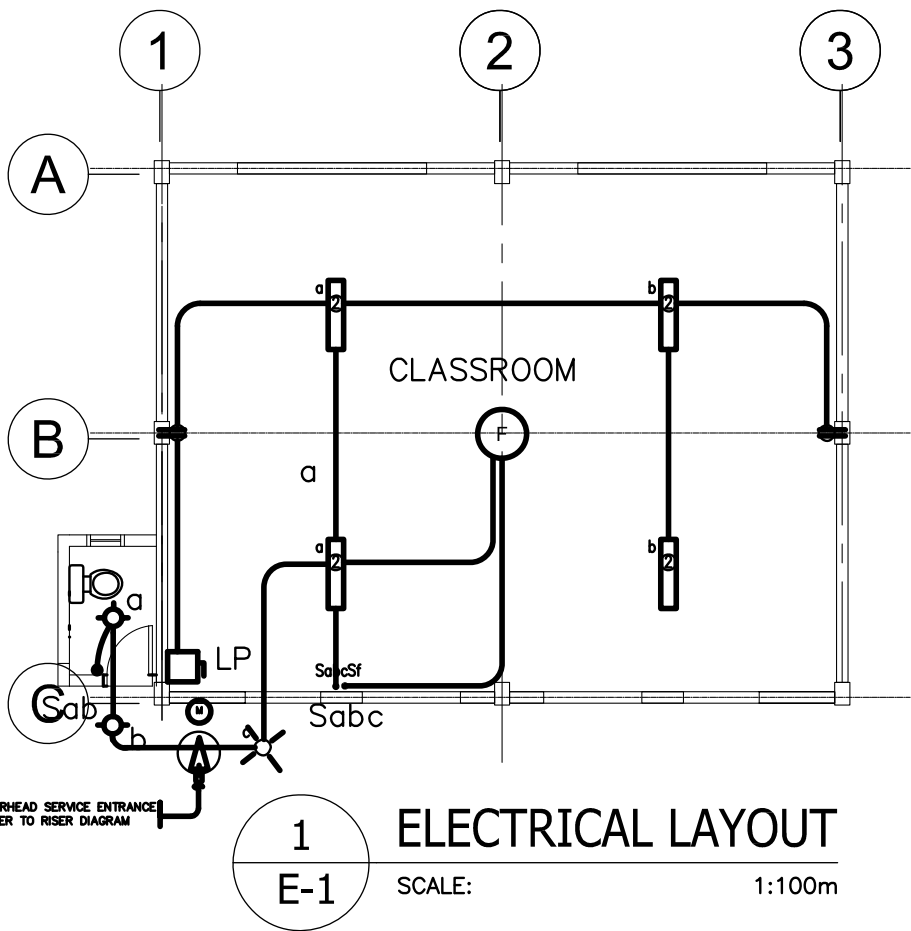
LEGEND

SYMBOL	DESCRIPTION
	- CEILING LIGHT OUTLET
	- 2 x 40 WATTS FLUORESCENT LAMP
	- CEILING FAN OUTLET
	- ONE GANG DEVICE SWITCH
	- TWO GANG DEVICE SWITCH
	- THREE GANG DEVICE SWITCH
	- 1 x 40 WATTS FLUORESCENT LAMP
	- FAN CONTROL SWITCH
	- RACEWAY CONDUIT CONCEALED IN CEILING
	- RACEWAY CONDUIT CONCEALED UNDER FLOOR
	- SAFETY SWITCH
	- DUPLEX CONVENIENCE OUTLET, GROUNDING TYPE 10 AMPS, 250 VOLT WITH MODERN PLATE COVER
	- ELECTRIC SERVICE METER
	- SERVICE ENTRANCE



ELECTRICAL RISER DIAGRAM

NOT TO SCALE



<div>REPUBLIC OF THE PHILIPPINES</div> <div>DepED</div> <div>DEPARTMENT OF EDUCATION</div> <div>PHYSICAL FACILITIES AND SCHOOLS ENGINEERING DIVISION</div> <div>MERALCO AVENUE, PASIG CITY</div>	PREPARED BY : <div>Maximo M. Calbang</div> <div>PDO - III</div> <div>PFSED-DepED</div>	CHECKED BY : <div>Venerando D. Sahagun</div> <div>ENGINEER III</div> <div>PFSED-DepED</div>	RECOMMENDING APPROVAL : <div>Luis O. Purisima Jr.</div> <div>HEAD, PLANNING AND DESIGN UNIT</div> <div>PFSED-DepED</div>	APPROVED BY : <div>Oliver R. Hernandez</div> <div>CHIEF, PFSED-OPS</div> <div>DepED</div>	PROJECT TITLE : <div>ONE STOREY</div> <div>ONE CLASSROOM</div> <div>7x9m (MODIFIED)</div> <div>LOCATION :</div>	PROJECT NO: 0000009 <div>DESIGNED BY: VDS</div> <div>ENCODED BY: Max C.</div> <div>CHECKED BY: LGP</div> <div>DATE : 01 01 2005</div>	OWNER : <div>DEPARTMENT OF EDUCATION</div> <div>DepED</div> <div>SHEET CONTENTS :<div>GENERAL NOTES</div><div>ELECTRICAL LAYOUT</div><div>CALCULATIONS</div><div>LEGEND</div><div>RISER DIAGRAM</div></div>	SHEET NO: <div>E - 1</div> <div>1</div>
--	--	---	--	---	---	---	---	---

NOTE: THIS DRAWING, AS AN INSTRUMENT OF SERVICE IS THE PROPERTY OF PHYSICAL FACILITIES AND SCHOOLS ENGINEERING DIVISION AND AS SUCH MUST NOT BE REPRODUCED OR COPIED IN PART OR IN WHOLE WITHOUT THEIR PERMISSION. ALL DRAWINGS ARE TO BE RETURNED WHEN NO LONGER IN USE.

REP. ACT 545