

1
A-1
PERSPECTIVE VIEW
SCALE: NTS

TABLE OF CONTENTS

REPUBLIC OF THE PHILIPPINES
OFFICE OF THE CITY/MUNICIPAL
ENGINEER/BUILDING OFFICIAL

DISTRICT/CITY/MUNICIPALITY

ARCHITECTURAL

- A-1 PERSPECTIVE VIEW, TABLE OF CONTENTS
- A-2 FLOOR PLAN, ELEVATIONS, ROOF PLAN
SECTIONS, REFLECTED CEILING PLAN
- A-3 SCHEDULE OF DOOR & WINDOWS, BAY
SECTION, DETAIL SECTION, LOUVER
BLOCK VENT., RAMP DETAIL

LAND USE & ZONING

LINE & GRADE

ARCHITECTURAL

STRUCTURAL

- S-1 FOUNDATION PLAN, ROOF FRAMING
PLAN FOOTING DETAIL, COLUMN DETAIL,
WF-1, RAMP DETAIL
- S-2 ELEVATIONS TYPICAL CONNECTION
DETAIL

STRUCTURAL

SANITARY






ELECTRICAL

- E-1 ELECTRICAL LAYOUT PLAN, RISER
DIAGRAM, LOAD SCHEDULE, GEN. NOTES

ELECTRICAL

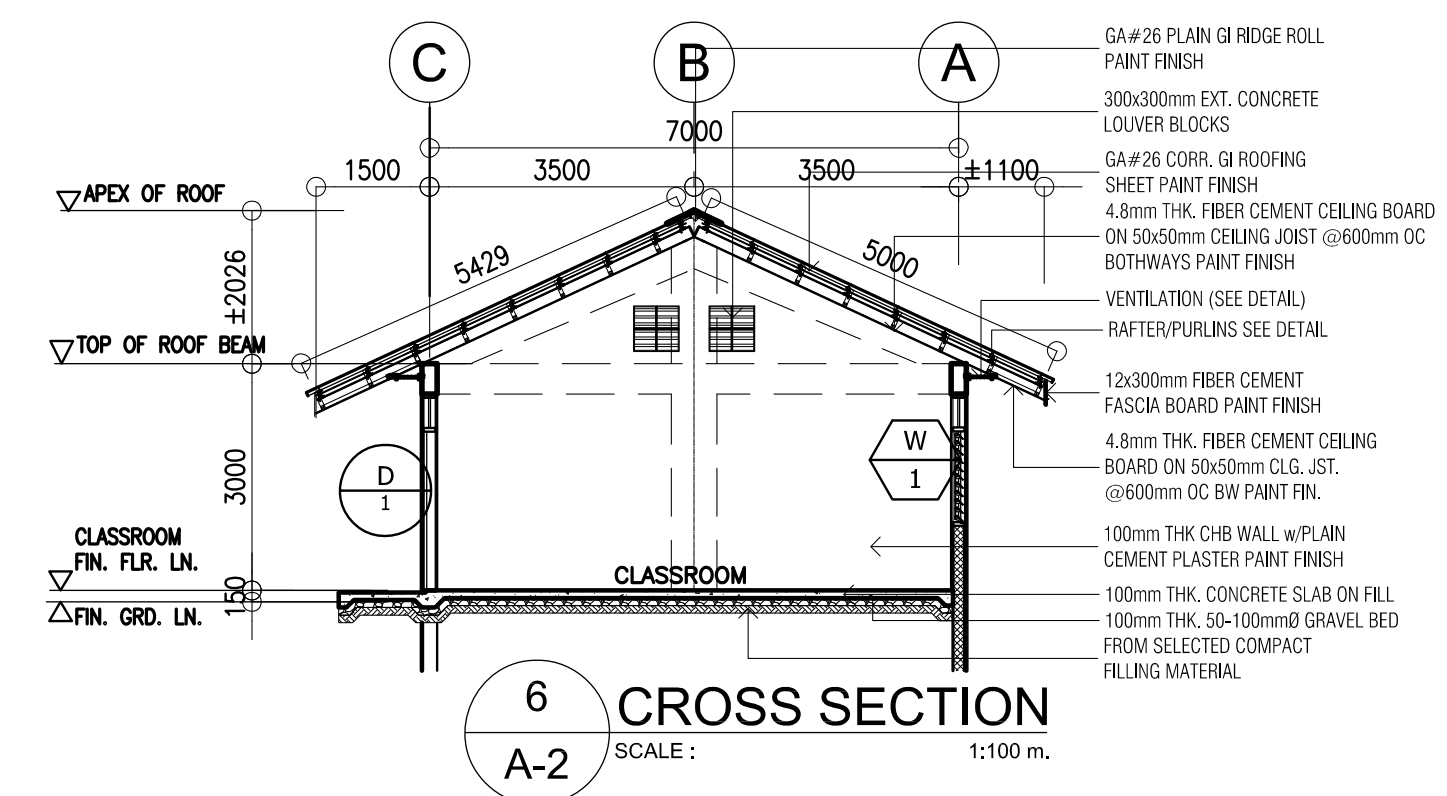
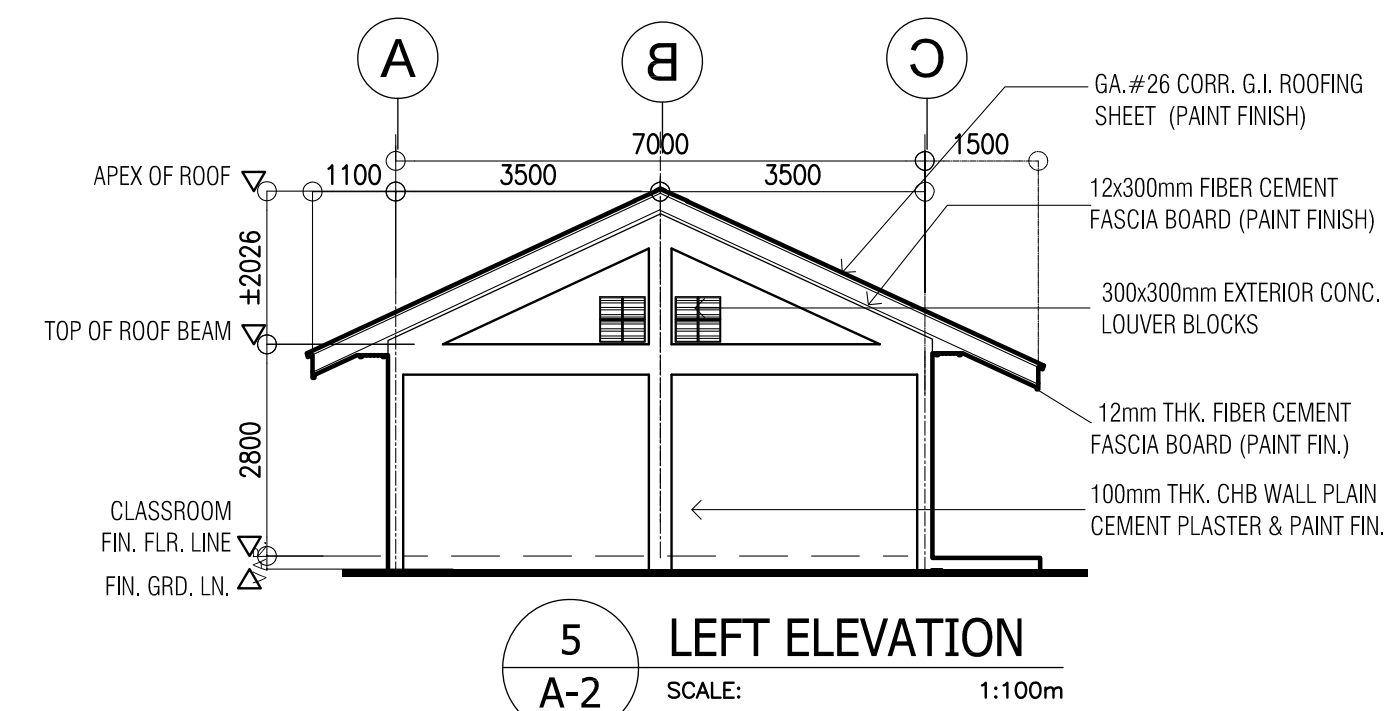
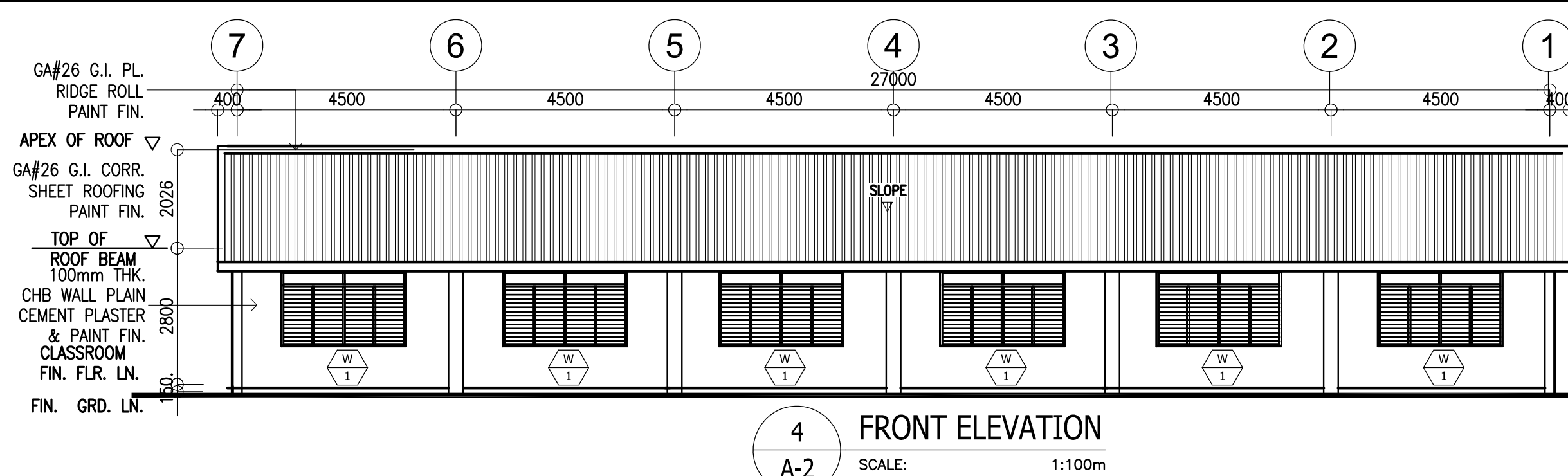
SANITARY






MECHANICAL

 <p>REPUBLIC OF THE PHILIPPINES DepED DEPARTMENT OF EDUCATION PHYSICAL FACILITIES AND SCHOOLS ENGINEERING DIVISION MERALCO AVENUE, PASIG CITY</p>	PREPARED BY :  MAXIMINO M. CALBANG PDO - III PFSED-DepED	CHECKED BY :  NATHANIEL Q. MENDOZA ARCHITECT III PFSED-DepED	RECOMMENDING APPROVAL :  LUIS G. PURISIMA JR. HEAD, PLANNING AND DESIGN UNIT PFSED-DepED	APPROVED BY :  OLIVER R. HERNANDEZ CHIEF, PFSED-OPS DepED	PROJECT TITLE : ONE STOREY THREE CLASSROOM 7x9m (MODIFIED) LOCATION :	PROJECT NO: 00200511 DESIGNED BY: NQM ENCODED BY: Max C. CHECKED BY: LGP DATE : 01 01 2005	OWNER : DEPARTMENT OF EDUCATION DepED SHEET CONTENTS : PERSPECTIVE VIEW TABLE OF CONTENTS	SHEET NO: A - 1 3

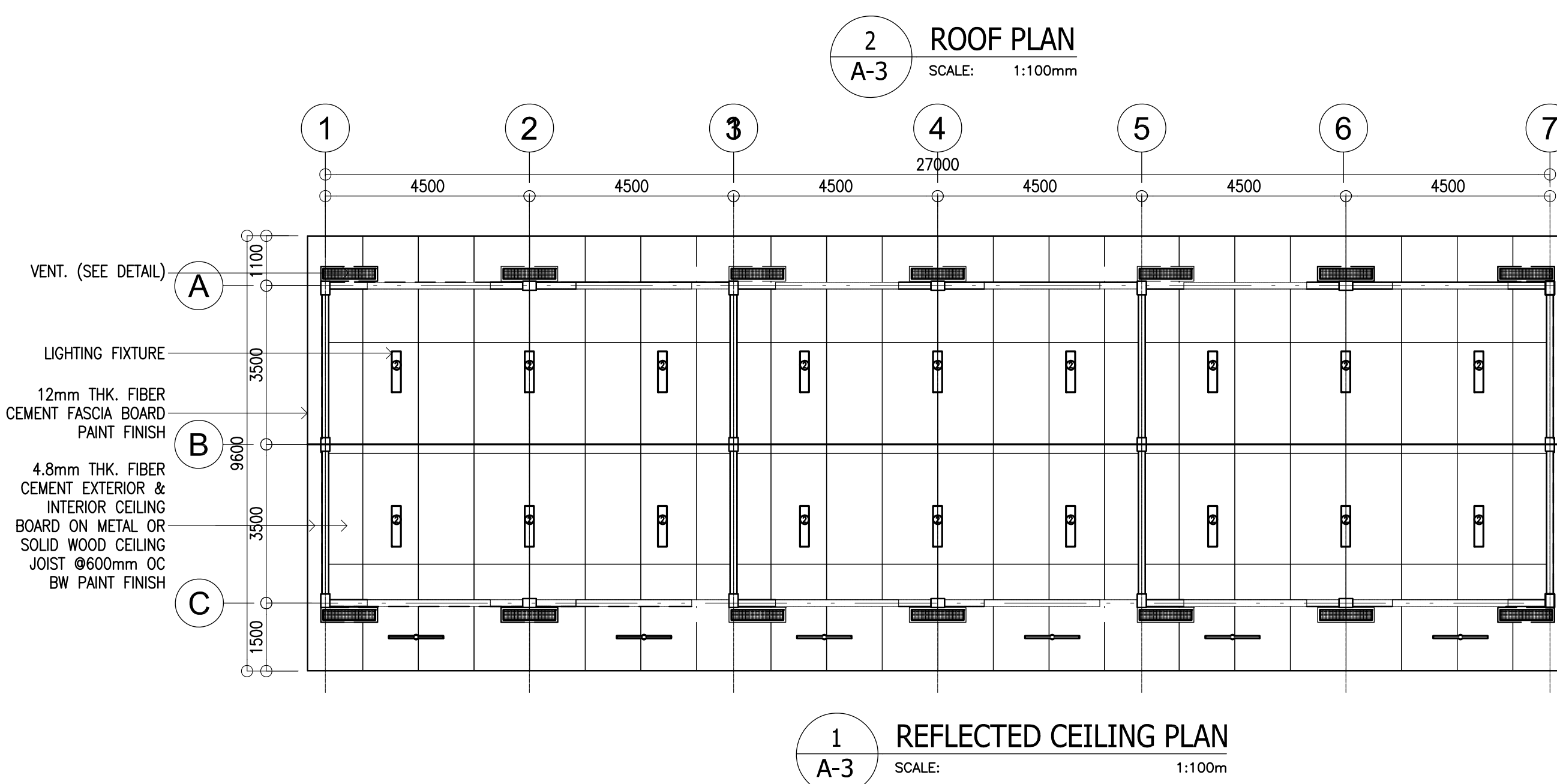
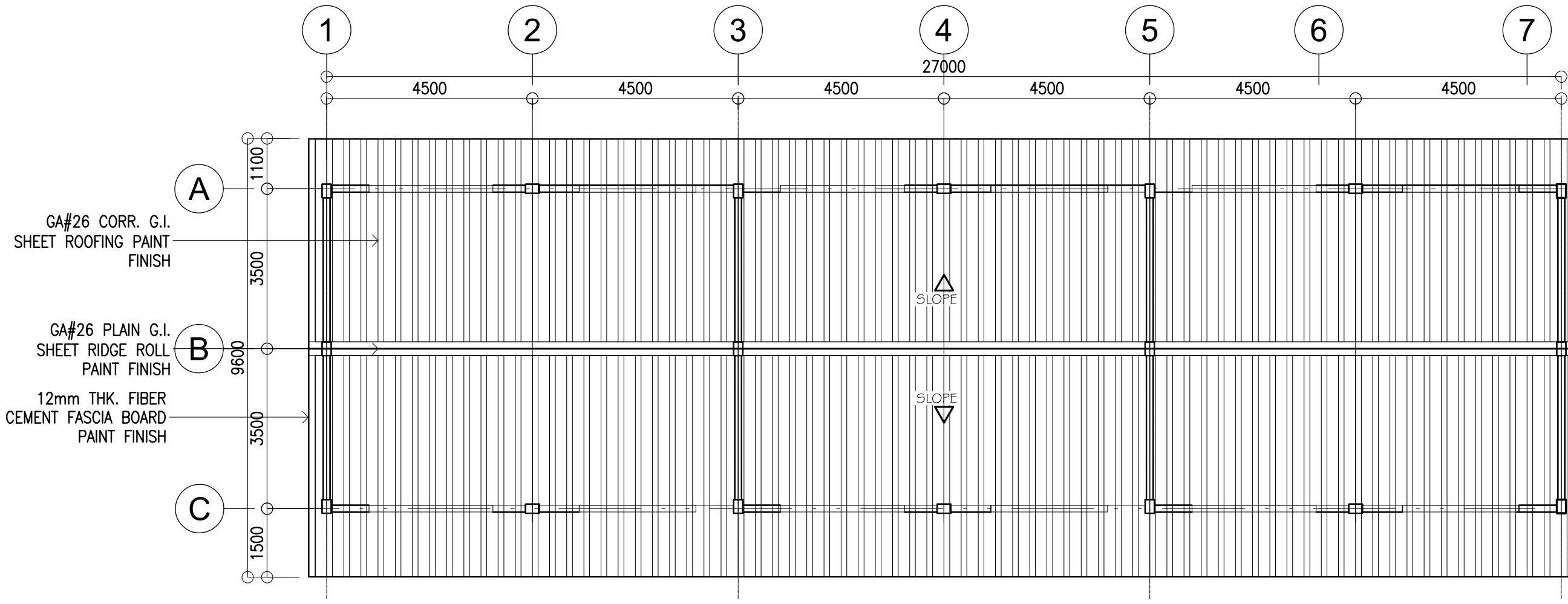
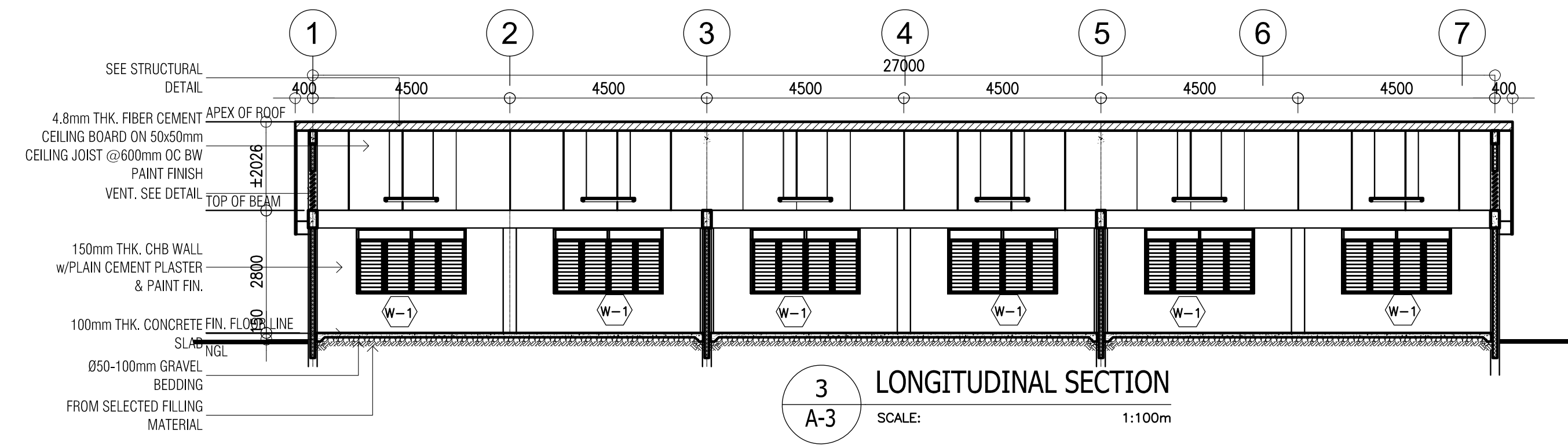
NOTE: THIS DRAWING, AS AN INSTRUMENT OF SERVICE IS THE PROPERTY OF PHYSICAL FACILITIES AND SCHOOLS ENGINEERING DIVISION AND AS SUCH MUST NOT BE REPRODUCED OR COPIED IN PART OR IN WHOLE WITHOUT THEIR PERMISSION. ALL DRAWINGS ARE TO BE RETURNED WHEN NO LONGER IN USE.

REP. ACT 545



 <p>REPUBLIC OF THE PHILIPPINES</p> <p>DepED</p> <p>DEPARTMENT OF EDUCATION</p> <p>PHYSICAL FACILITIES AND SCHOOLS ENGINEERING DIVISION</p> <p>MERALCO AVENUE, PASIG CITY</p>	<p>PREPARED BY :</p> <p> <u>MAXIMO M. CALBANG</u> PDO – III PFSED–DepED</p>	<p>CHECKED BY :</p> <p> <u>NATHANIEL Q. MENDOZA</u> ARCHITECT III PFSED–DepED</p>	<p>RECOMMENDING APPROVAL :</p> <p> <u>LUIS C. PURISIMA JR.</u> HEAD, PLANNING AND DESIGN UNIT PFSED–DepED</p>	<p>APPROVED BY :</p> <p> <u>OLIVER R. HERNANDEZ</u> CHIEF, PFSED–OPS DepED</p>	<p>PROJECT TITLE :</p> <p>ONE STOREY THREE CLASSROOM 7x9m (MODIFIED)</p>	<p>PROJECT NO: 00200511</p> <p>DESIGNED BY: NQM</p> <p>ENCODED BY: Max C.</p> <p>CHECKED BY: LGP</p>	<p>OWNER :</p> <p>DEPARTMENT OF EDUCATION DepED</p>	<p>SHEET NO:</p> <p>A -2</p>
							<p>SHEET CONTENTS : FLOOR, REFLECTED CLG., ROOF PLANS FRONT, RIGHT REAR, LEFT REAR, ELEVATIONS, ROOF PLAN SECTION, REFLECTED CEILING PLAN, LONG SECTION</p>	
						<p>LOCATION :</p>	<p>DATE : 01 01 2005</p>	
								<p>3</p>

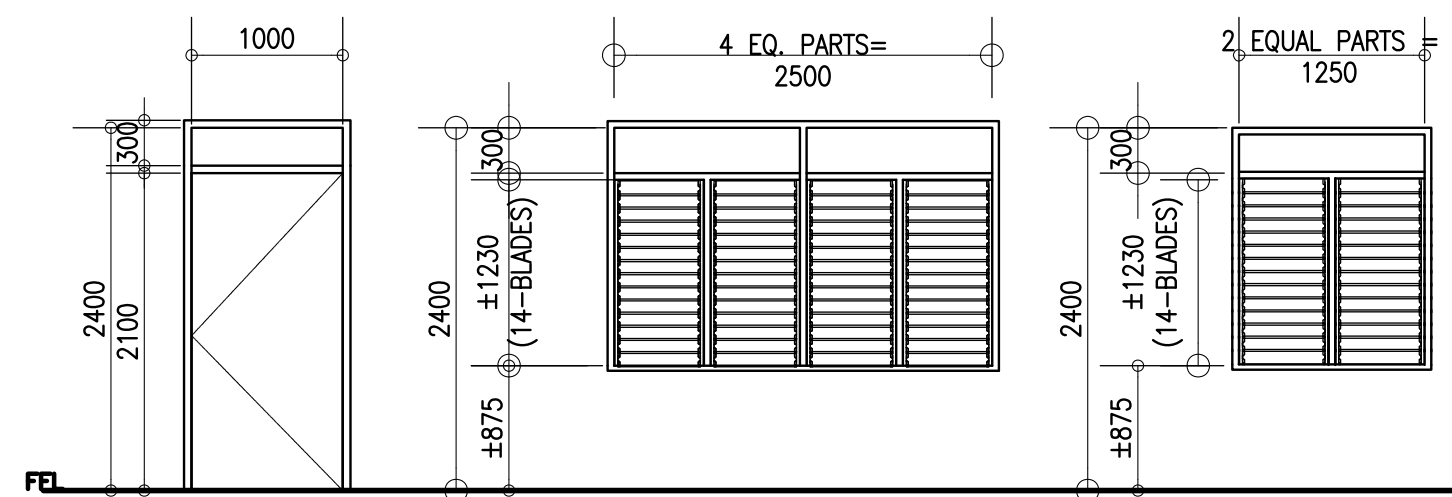
NOTE: THIS DRAWING, AS AN INSTRUMENT OF SERVICE IS THE PROPERTY OF PHYSICAL FACILITIES AND SCHOOLS ENGINEERING DIVISION AND AS SUCH MUST NOT BE REPRODUCED OR COPIED IN PART OR IN WHOLE WITHOUT THEIR PERMISSION, ALL DRAWINGS ARE TO BE RETURNED WHEN NO LONGER IN USE.



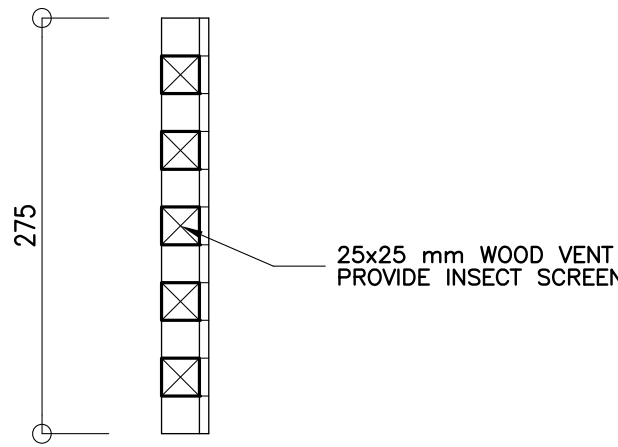
<p>REPUBLIC OF THE PHILIPPINES</p> <p>DepED</p> <p>DEPARTMENT OF EDUCATION</p> <p>PHYSICAL FACILITIES AND SCHOOLS ENGINEERING DIVISION</p> <p>MERALCO AVENUE, PASIG CITY</p>	<p>PREPARED BY :</p> <p><i>Maximo M. Calbang</i></p> <p>MAXIMO M. CALBANG</p> <p>PDO - III</p> <p>PFSED-DepED</p>	<p>CHECKED BY :</p> <p><i>Nathaniel Q. Mendoza</i></p> <p>NATHANIEL Q. MENDOZA</p> <p>ARCHITECT III</p> <p>PFSED-DepED</p>	<p>RECOMMENDING APPROVAL :</p> <p><i>Luis G. Purisima Jr.</i></p> <p>LUIS G. PURISIMA JR.</p> <p>HEAD, PLANNING AND DESIGN UNIT</p> <p>PFSED-DepED</p>	<p>APPROVED BY :</p> <p><i>Oliver R. Hernandez</i></p> <p>OLIVER R. HERNANDEZ</p> <p>CHIEF, PFSED-OPS</p> <p>DepED</p>	<p>PROJECT TITLE :</p> <p>ONE STOREY THREE CLASSROOM 7x9m (MODIFIED)</p> <p>LOCATION :</p>	<p>PROJECT NO: 00200511</p> <p>DESIGNED BY: NQM</p> <p>ENCODED BY: Max C.</p> <p>CHECKED BY: LGP</p> <p>DATE : 01 01 2005</p>	<p>OWNER :</p> <p>DEPARTMENT OF EDUCATION DepED</p> <p>SHEET CONTENTS : DOOR & WINDOW SCHEDULE DETAILS</p>	<p>SHEET NO:</p> <p>A - 3</p> <p>3</p>
---	--	---	---	---	--	---	--	--

NOTE: THIS DRAWING, AS AN INSTRUMENT OF SERVICE IS THE PROPERTY OF PHYSICAL FACILITIES AND SCHOOLS ENGINEERING DIVISION AND AS SUCH MUST NOT BE REPRODUCED OR COPIED IN PART OR IN WHOLE WITHOUT THEIR PERMISSION. ALL DRAWINGS ARE TO BE RETURNED WHEN NO LONGER IN USE.

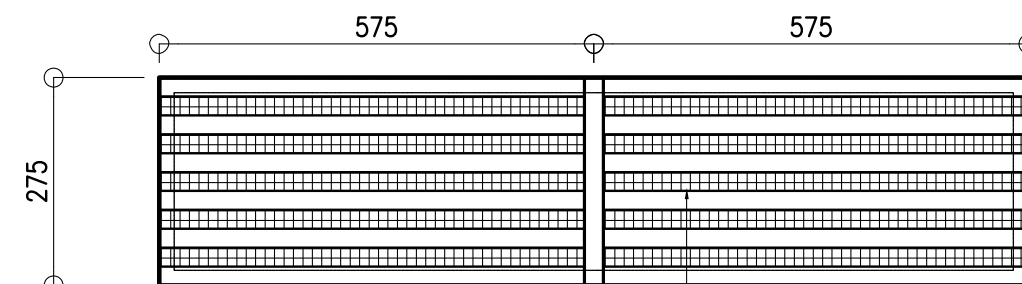
REP. ACT 545



1 DOOR & WINDOW SCHEDULE
SCALE: 1:50m

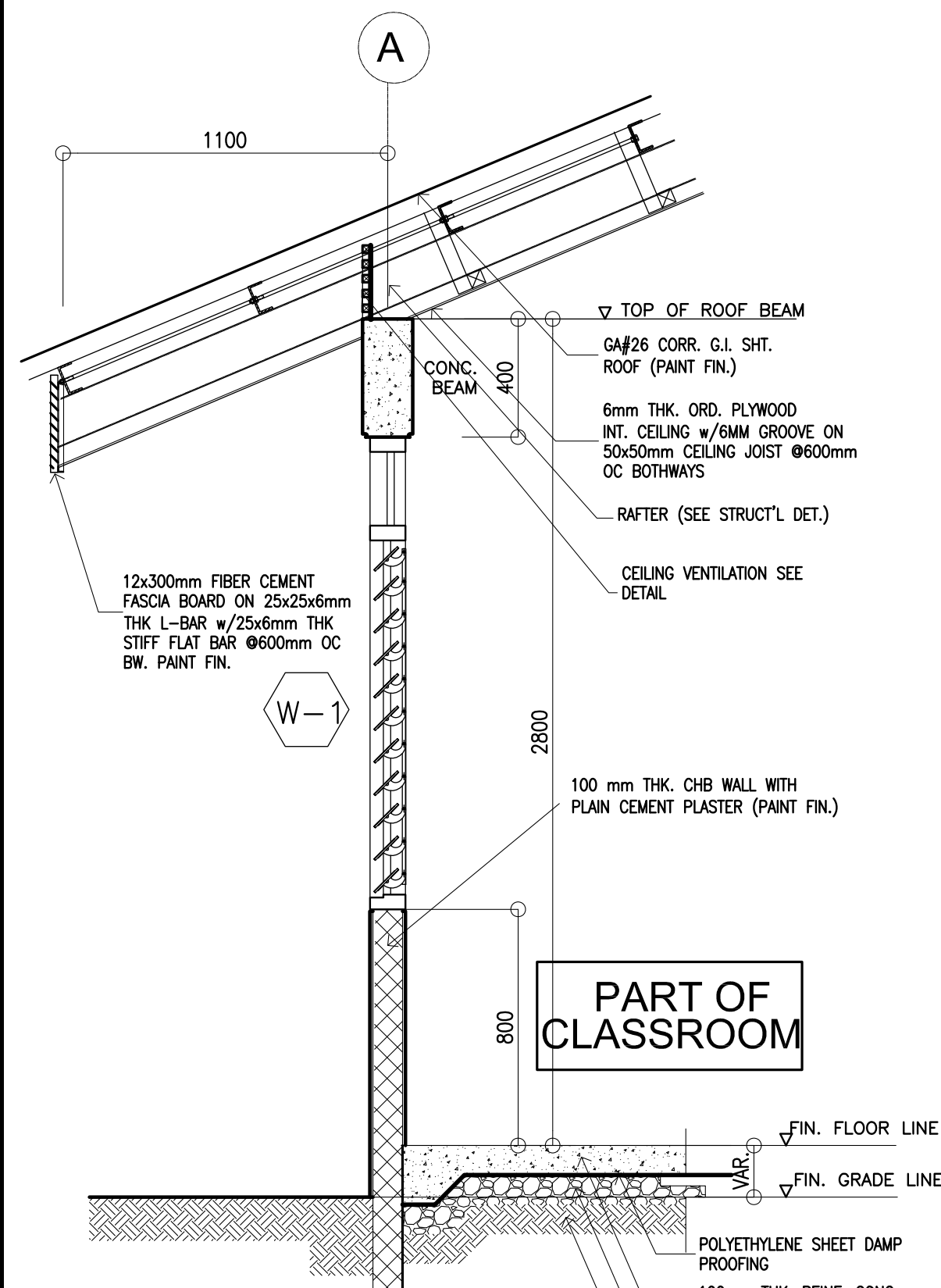


ELEV



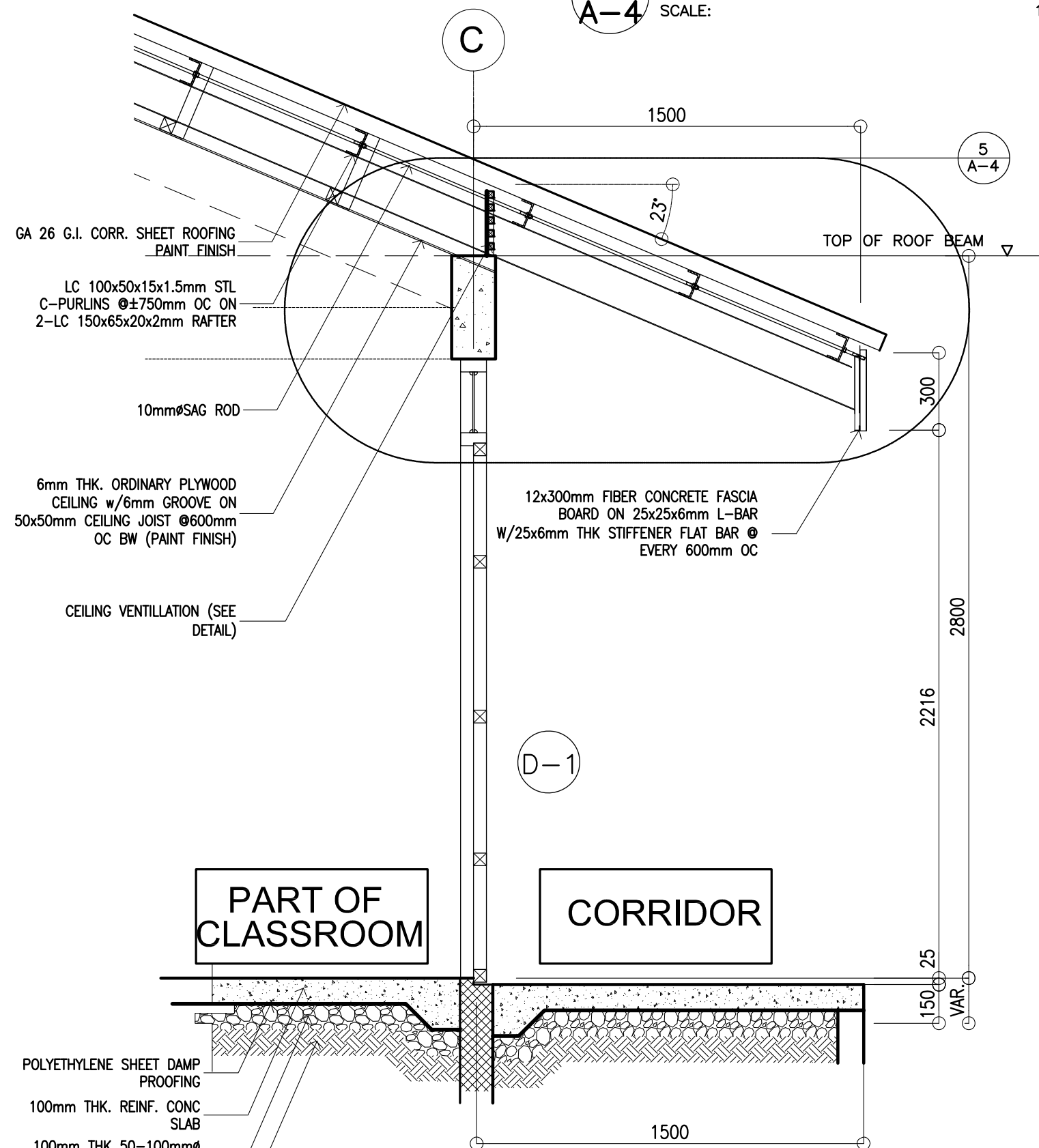
PLAN

4 TYP. CLG. VENT. DETAILS
SCALE: 1:10 mts.



PART OF CLASSROOM

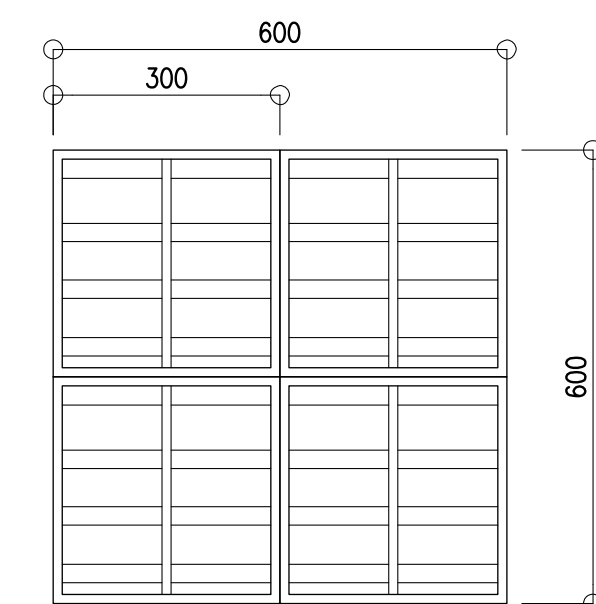
1 PLAN
SCALE: 1:100m



PART OF CLASSROOM

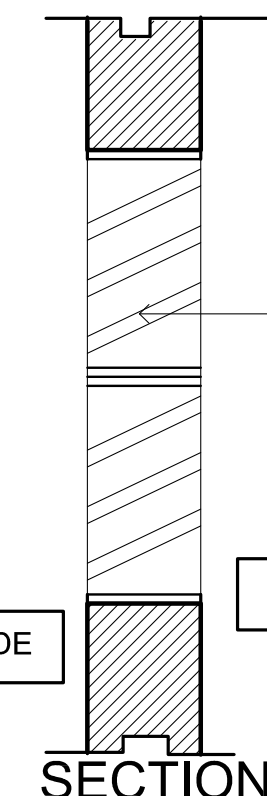
CORRIDOR

2 PLAN
SCALE: 1:100m

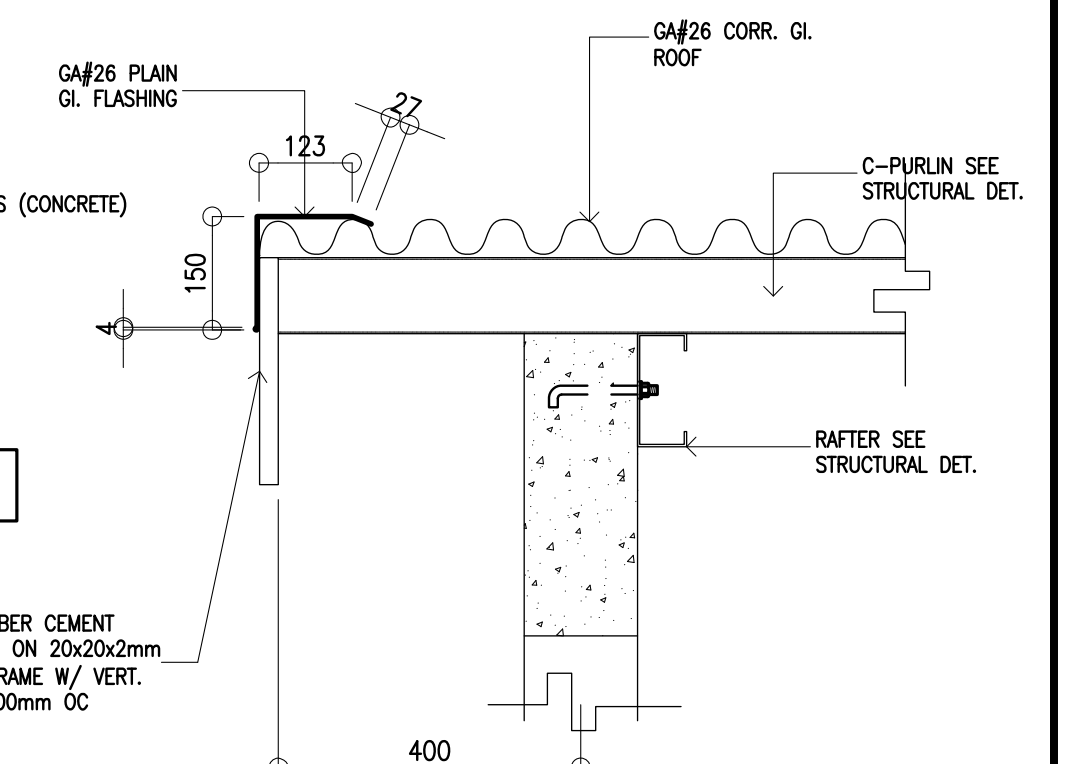


ELEVATION

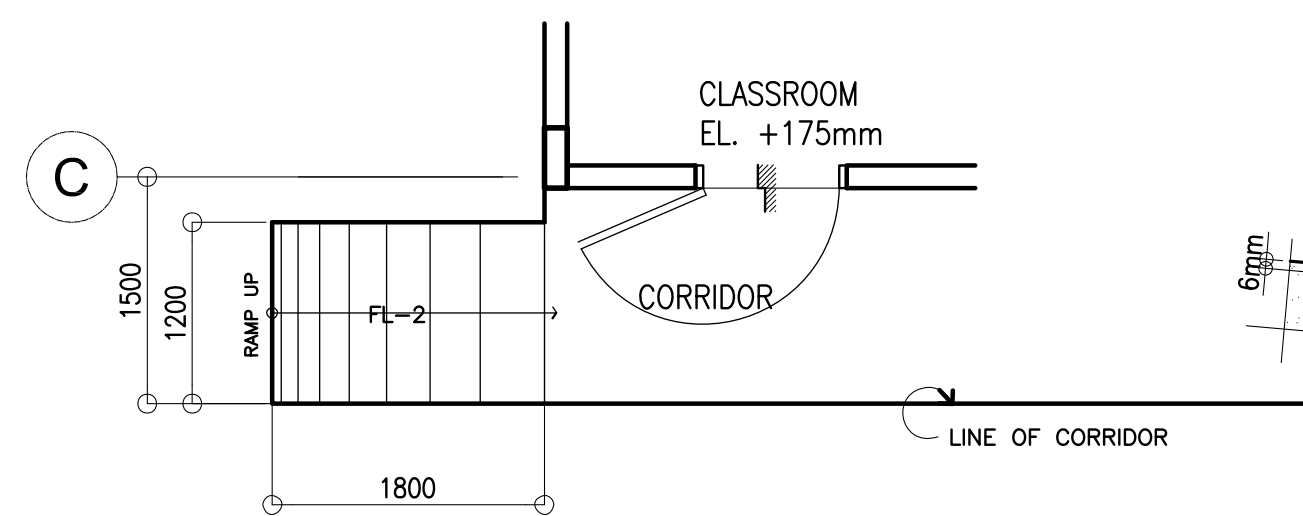
6 LOUVER BLOCK DETAIL
SCALE: 1:10 mts.



SECTION

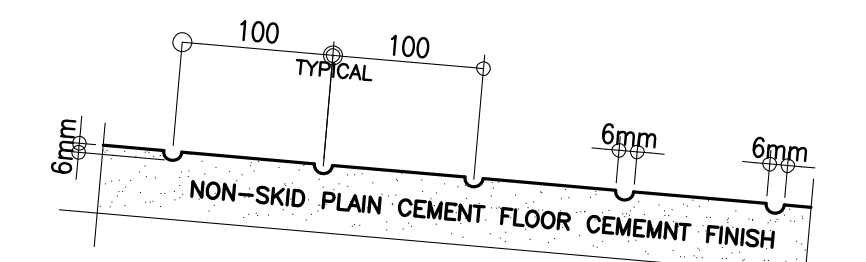


7 EAVES DETAIL
SCALE: 1:20M



DETAIL PLAN
SCALE: 1:50 M

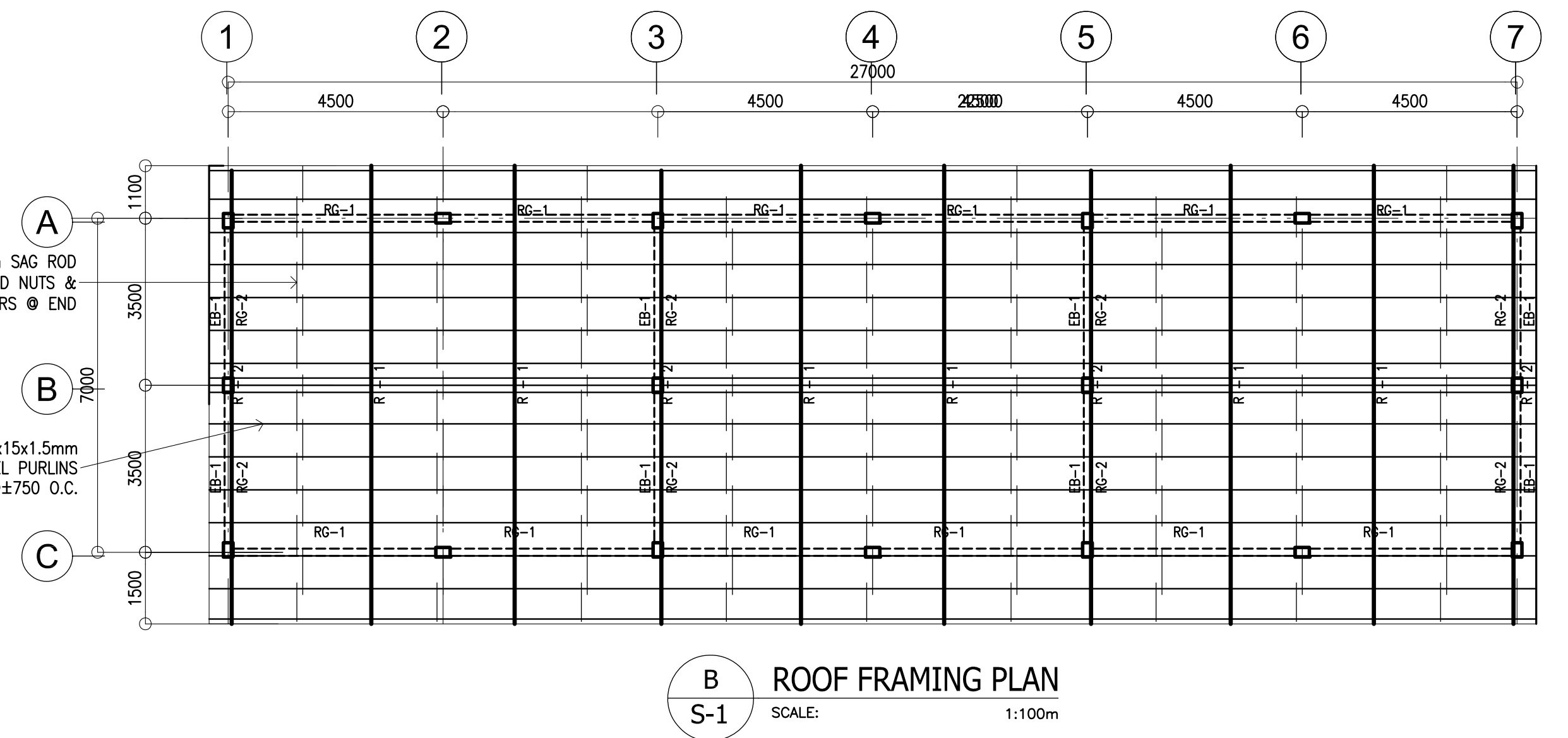
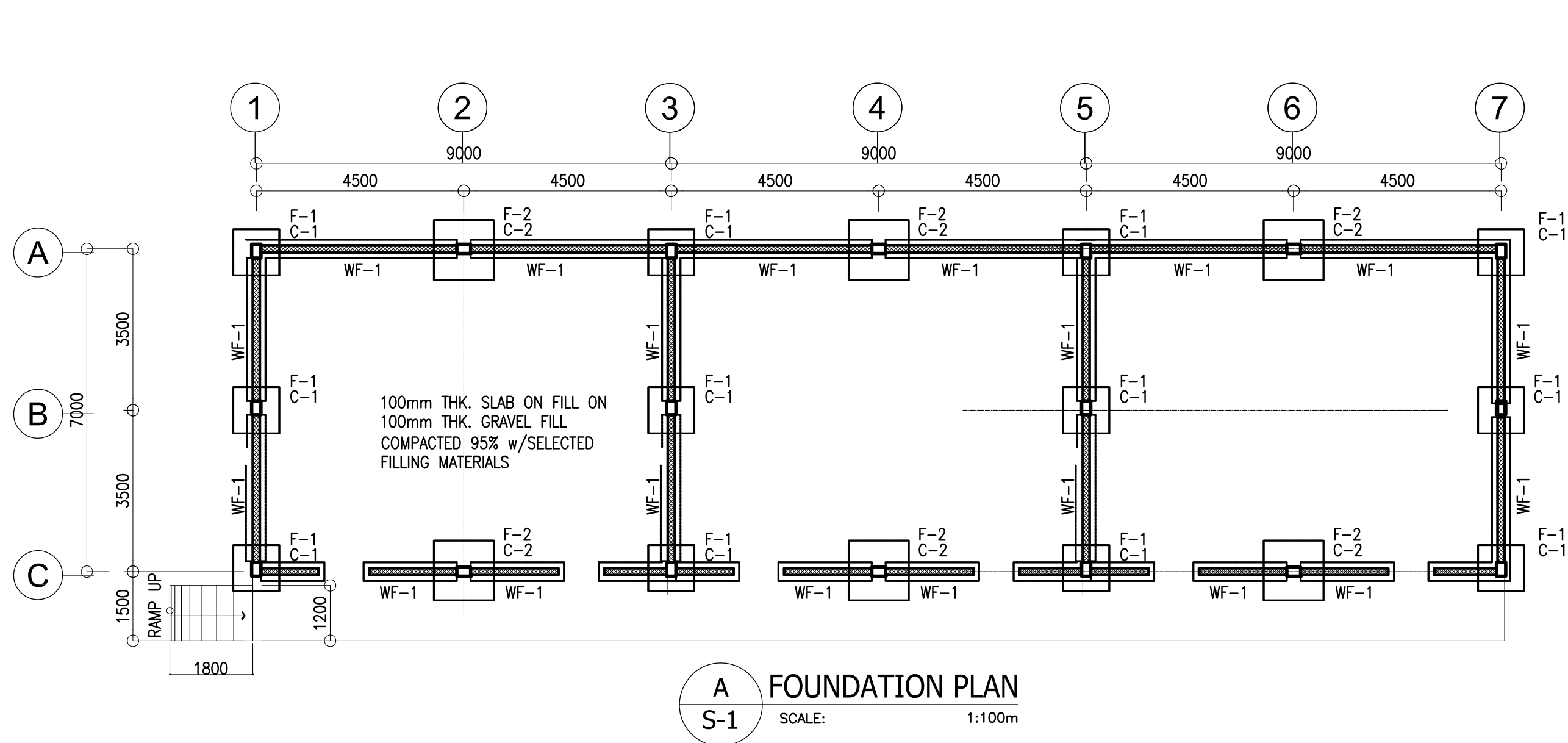
8 RAMP DETAILS
SCALE: AS SHOWN



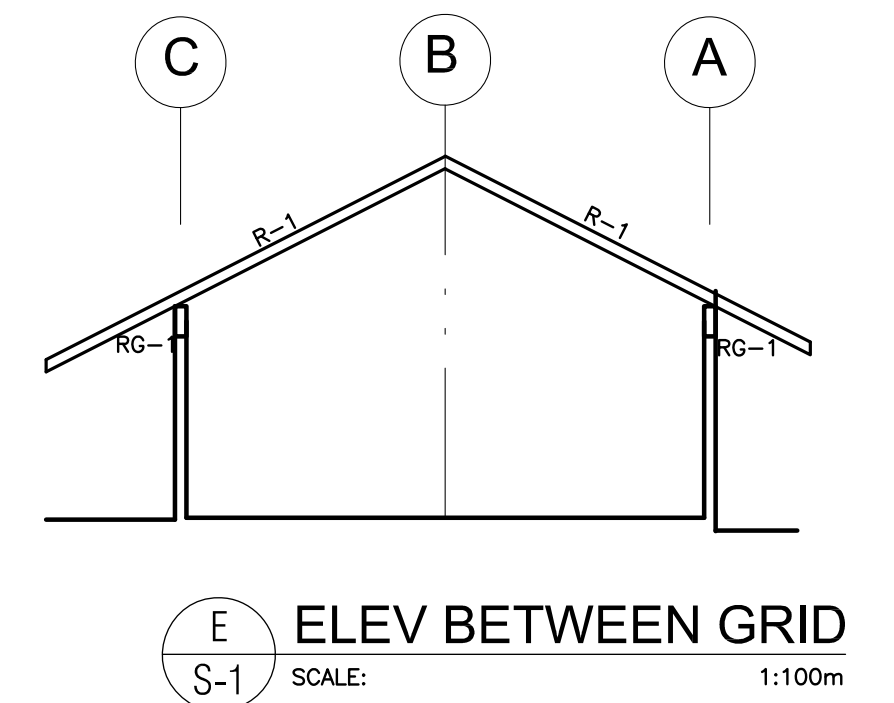
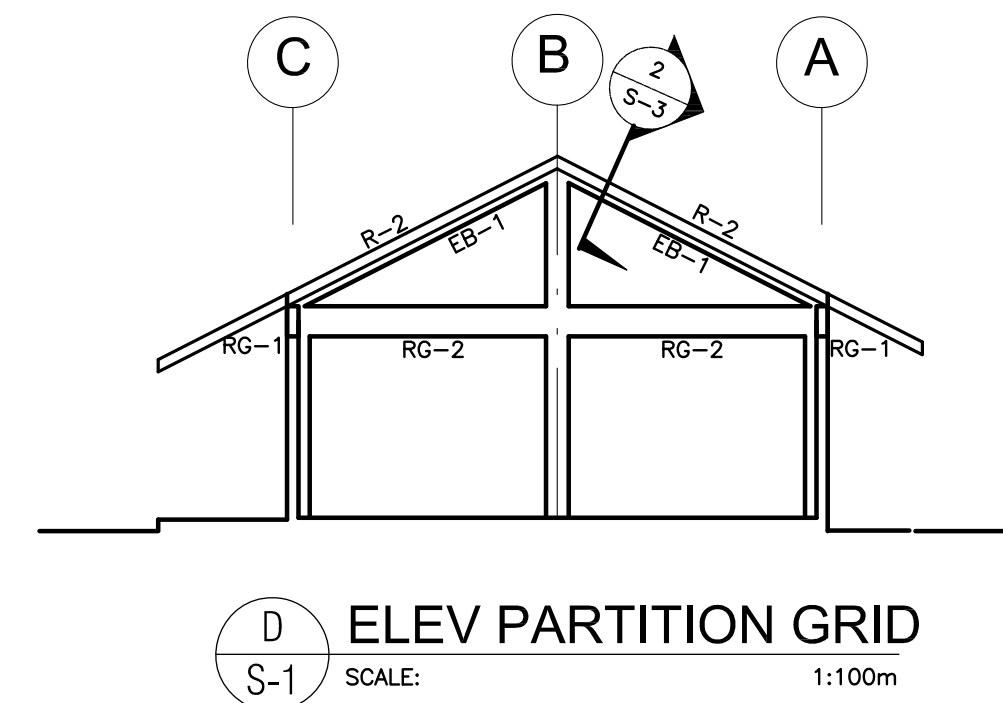
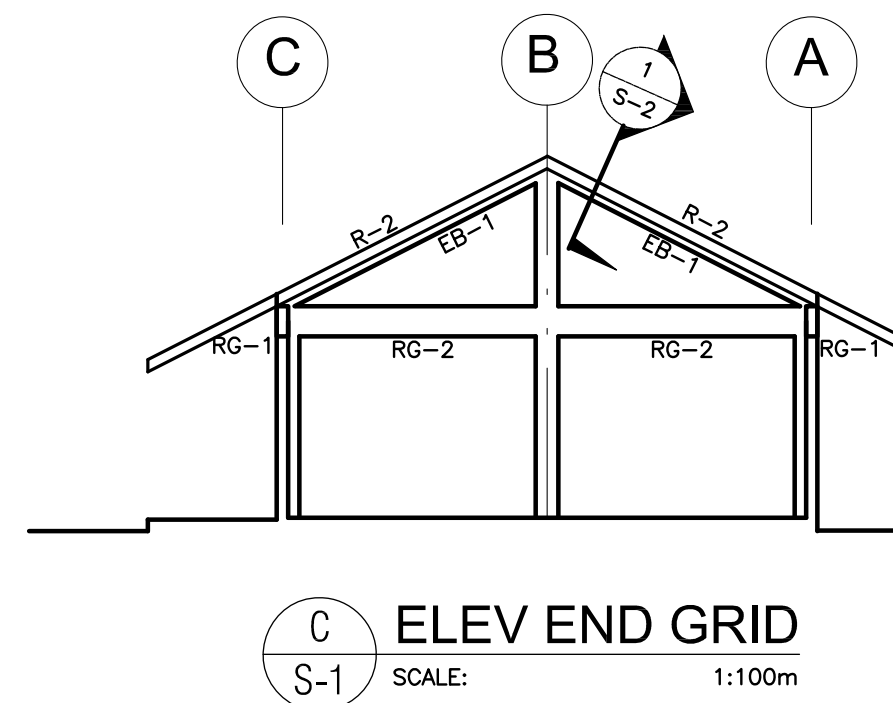
DETAIL SECTION
SCALE: 1:5 M

<p>REPUBLIC OF THE PHILIPPINES</p> <p>DepED</p> <p>DEPARTMENT OF EDUCATION</p> <p>PHYSICAL FACILITIES AND SCHOOLS ENGINEERING DIVISION</p> <p>MERALCO AVENUE, PASIG CITY</p>	<p>PREPARED BY :</p> <p><i>Maximo M. Calbang</i></p> <p>MAXIMO M. CALBANG</p> <p>PDO - III</p> <p>PFSED-DepED</p>	<p>CHECKED BY :</p> <p><i>Nathaniel Q. Mendoza</i></p> <p>NATHANIEL Q. MENDOZA</p> <p>ARCHITECT III</p> <p>PFSED-DepED</p>	<p>RECOMMENDING APPROVAL :</p> <p><i>Luis G. Purisima Jr.</i></p> <p>LUIS G. PURISIMA JR.</p> <p>HEAD, PLANNING AND DESIGN UNIT</p> <p>PFSED-DepED</p>	<p>APPROVED BY :</p> <p><i>Oliver R. Hernandez</i></p> <p>OLIVER R. HERNANDEZ</p> <p>CHIEF, PFSED-OPS</p> <p>DepED</p>	<p>PROJECT TITLE :</p> <p>ONE STOREY</p> <p>THREE CLASSROOM</p> <p>7x9m (MODIFIED)</p> <p>LOCATION :</p>	<p>PROJECT NO: 00200511</p> <p>DESIGNED BY: NQM</p> <p>ENCODED BY: Max C.</p> <p>CHECKED BY: LGP</p> <p>DATE: 01 01 2005</p>	<p>OWNER :</p> <p>DEPARTMENT OF EDUCATION</p> <p>DepED</p> <p>SHEET CONTENTS : FLOOR PLAN</p> <p>ELEVATIONS</p> <p>SECTIONS</p> <p>DETAILS</p>	<p>SHEET NO:</p> <p>A - 4</p> <p>4</p>
---	--	---	---	---	---	--	--	--

NOTE: THIS DRAWING, AS AN INSTRUMENT OF SERVICE IS THE PROPERTY OF PHYSICAL FACILITIES AND SCHOOLS ENGINEERING DIVISION AND AS SUCH MUST NOT BE REPRODUCED OR COPIED IN PART OR IN WHOLE WITHOUT THEIR PERMISSION. ALL DRAWINGS ARE TO BE RETURNED WHEN NO LONGER IN USE.



COLUMN SCHEDULE		
LEVEL	C-1	C-2
FOUNDATION LEVEL TO ROOF LEVEL	<p>MAIN BAR: 4-Ø16mm TIES : Ø10 mm 1@50, 8@75, REST @ 150mm TO CENTER</p>	<p>MAIN BAR: 6-Ø16mm TIES : Ø10 mm 1@50, 8@75, REST @ 150mm TO CENTER</p>



SCHEDULE OF FOOTINGS							
FOOTING MARK	FOOTING DIMENSIONS (mm)				REINFORCEMENT		REMARKS
	LENGTH (L)	WIDTH (W)	DEPTH (D)	THICKNESS (t)	BAR X	BAR Y	
F-1	800	800	1200	250	4 - 16mmØ	4 - 16mmØ	SQUARE FOOTING
F-2	1000	1000	1200	250	4 - 16mmØ	4 - 16mmØ	SQUARE FOOTING

DESIGN CRITERIA :

A. CONCRETE

$f_c' = 20.685 \text{ Mpa (3,000 Psi)}$, minimum compressive strength of concrete a 28 days unless otherwise specified.

B. REBAR

$f_y = 275.8 \text{ Mpa (40,000 Psi)}$, minimum yield strength of reinforcing bars unless otherwise specified.

C. STRUCTURAL STEEL

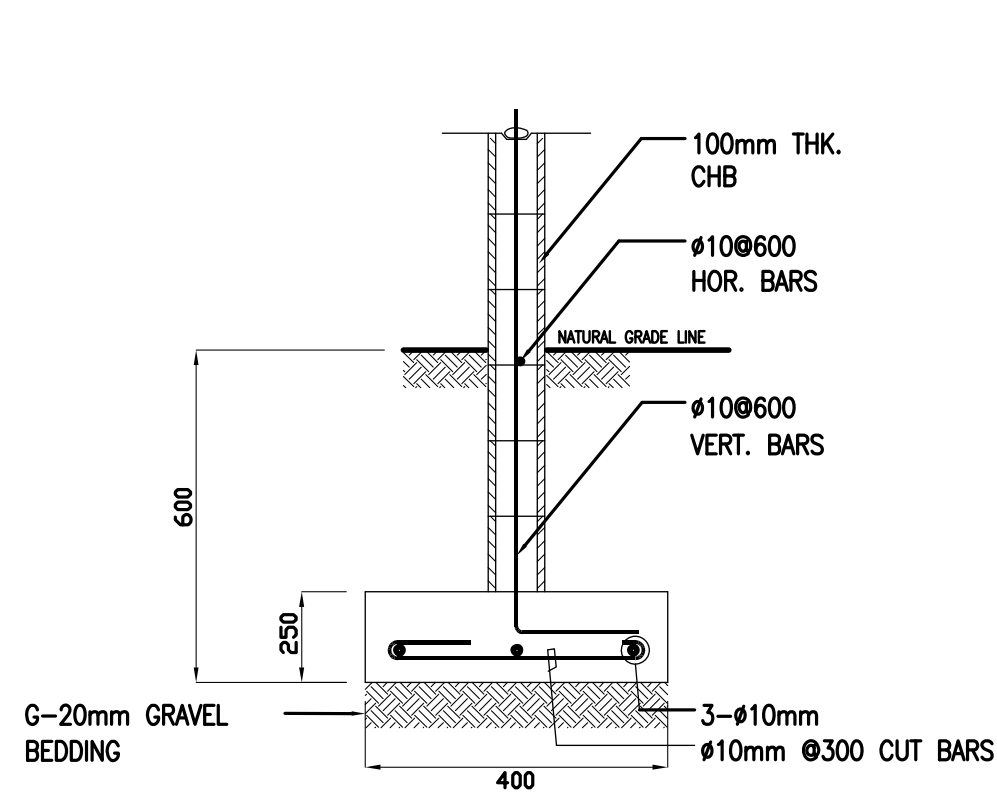
$F_y = 248 \text{ Mpa (36 Kai)}$, specified minimum yield strength unless otherwise specified.

D. FOUNDATION

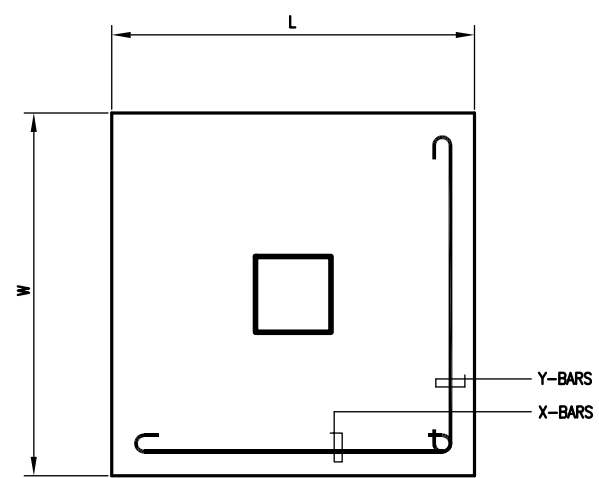
$SBP = 95.706 \text{ Kpa (2,000 Psf)}$, was used in the design for all footings. No footing shall rest on fill.

<p>REPUBLIC OF THE PHILIPPINES DepED DEPARTMENT OF EDUCATION PHYSICAL FACILITIES AND SCHOOLS ENGINEERING DIVISION MERALCO AVENUE, PASIG CITY</p>	PREPARED BY : MAXIMINO M. CALBANG PDO - III PFSED-DepED	CHECKED BY : ANTONIA M. ALHAMBRA CIVIL ENGINEER/MASTER PLUMBER PFSED-DepED	RECOMMENDING APPROVAL : LUIS C. PURISIMA JR. HEAD, PLANNING AND DESIGN UNIT PFSED-DepED	APPROVED BY : OLIVER R. HERNANDEZ CHIEF, PFSED-OPS DepED	PROJECT TITLE : ONE STOREY THREE CLASSROOM 7x9m (MODIFIED)	PROJECT NO: 00200511	OWNER : DEPARTMENT OF EDUCATION DepED	SHEET NO: S - 1
					LOCATION :	DESIGNED BY: AMA	SHEET CONTENTS : FOUNDATION PLAN, ROOF FRAMING PLAN FOOTING DETAIL, COLUMN DETAIL, WF-1, RAMP DET.	
						ENCODED BY: Max C.		
						CHECKED BY: LGP		
						DATE : 01 01 2005		2

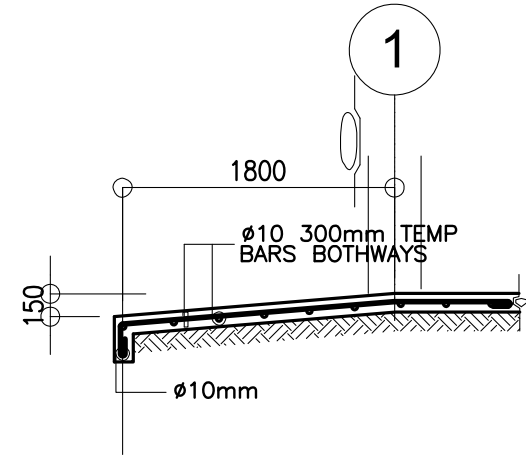
NOTE: THIS DRAWING, AS AN INSTRUMENT OF SERVICE IS THE PROPERTY OF PHYSICAL FACILITIES AND SCHOOLS ENGINEERING DIVISION AND AS SUCH MUST NOT BE REPRODUCED OR COPIED IN PART OR IN WHOLE WITHOUT THEIR PERMISSION. ALL DRAWINGS ARE TO BE RETURNED WHEN NO LONGER IN USE.



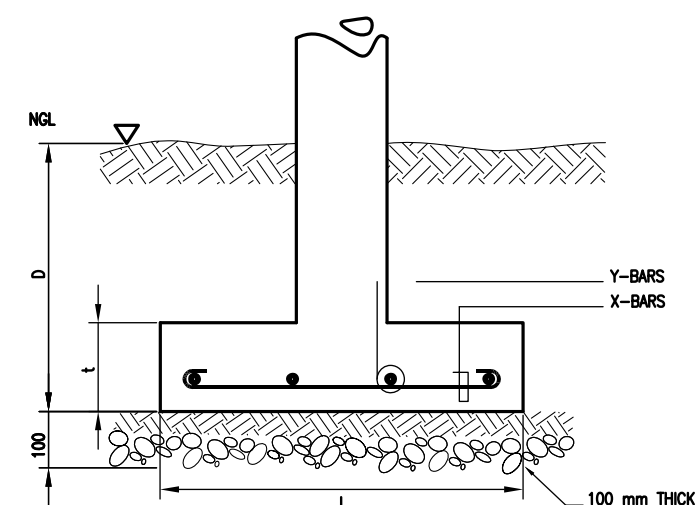
D
S-1
DETAIL OF WF-1
SCALE : NTS.



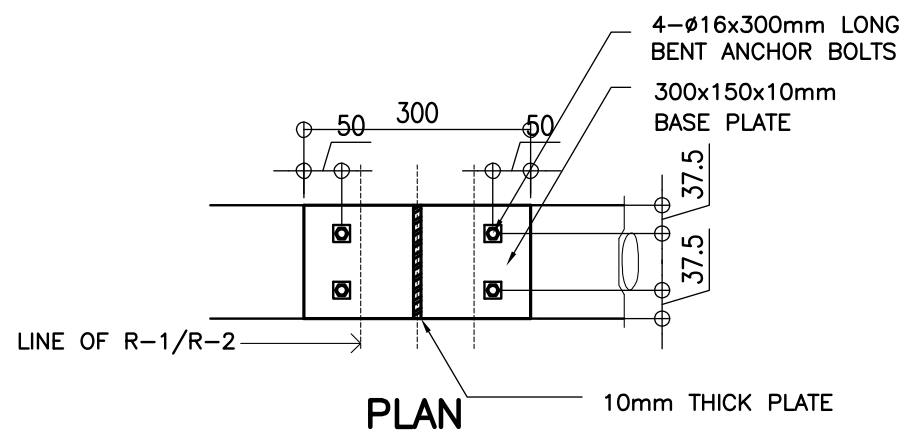
PLAN



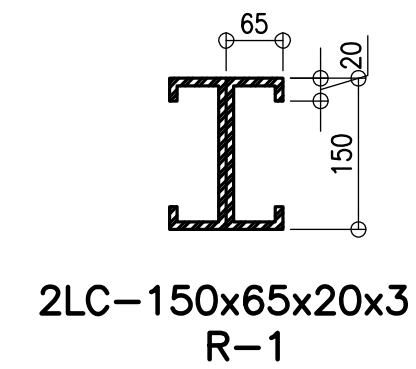
E
S-1
DETAIL OF RAMP
SCALE 1 : 50M



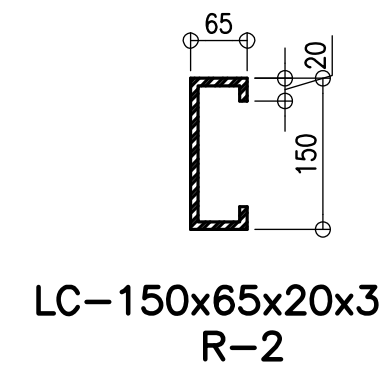
SECTION



PLAN

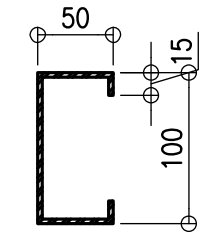


2LC-150x65x20x3
R-1



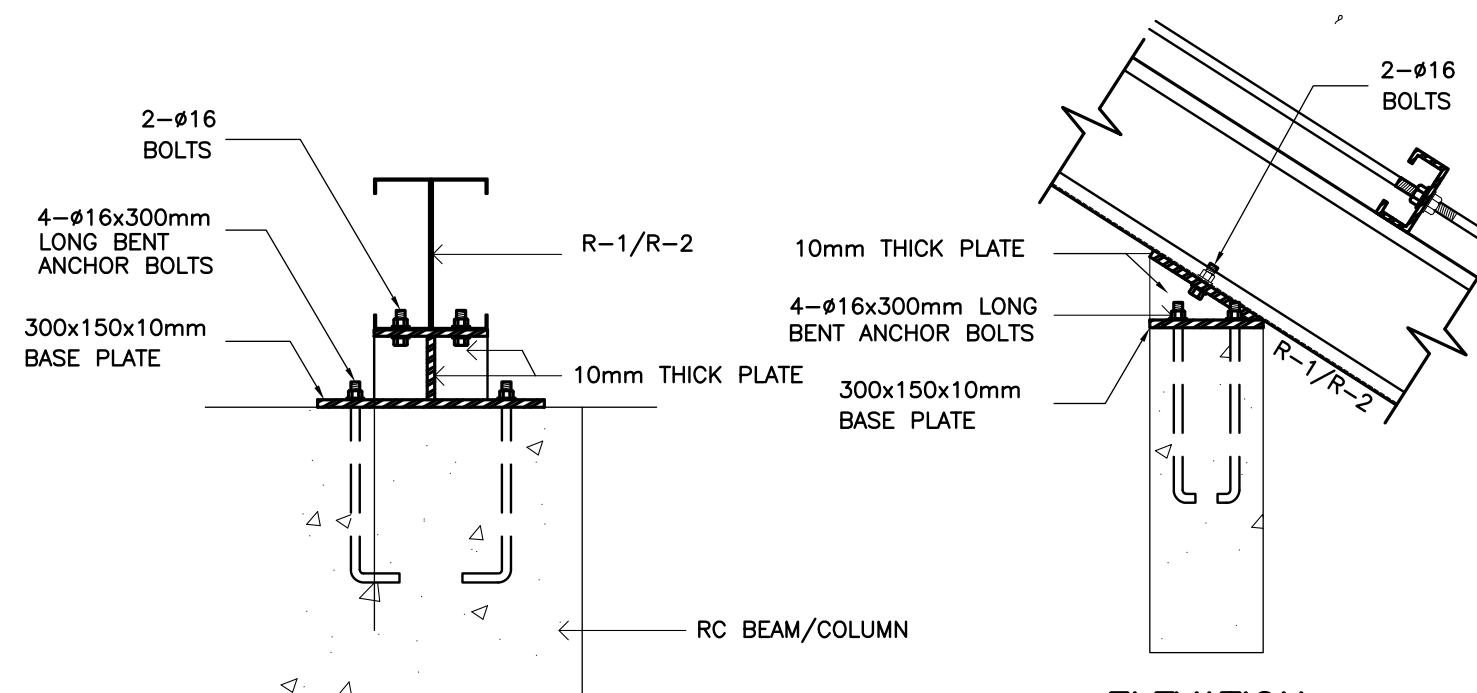
LC-150x65x20x3
R-2

E
S-2
DETAIL OF RAFTER
SCALE NTS



LC-100x50x15x1.5

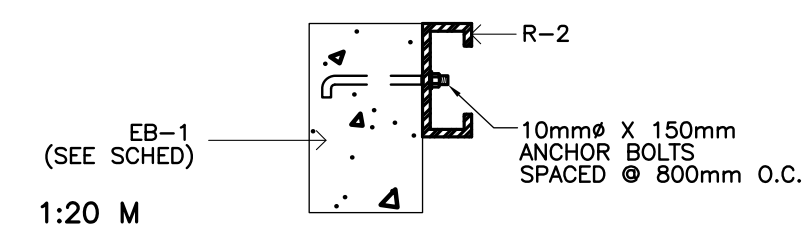
F
S-2
DETAIL OF PURLINS
SCALE NTS



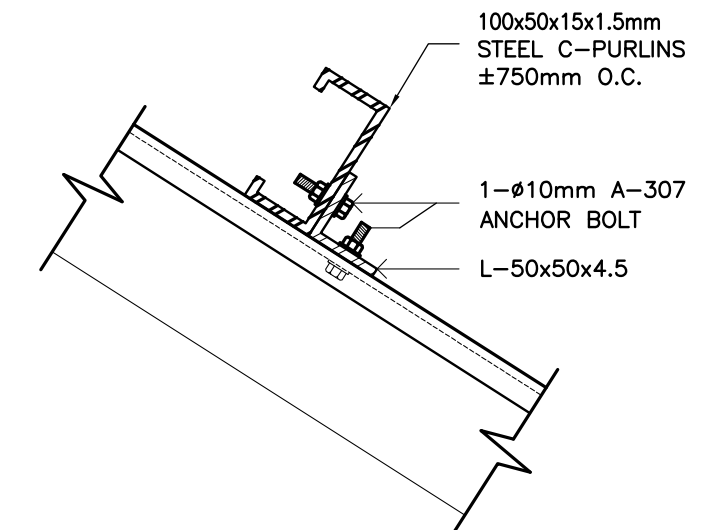
ELEVATION

ELEVATION

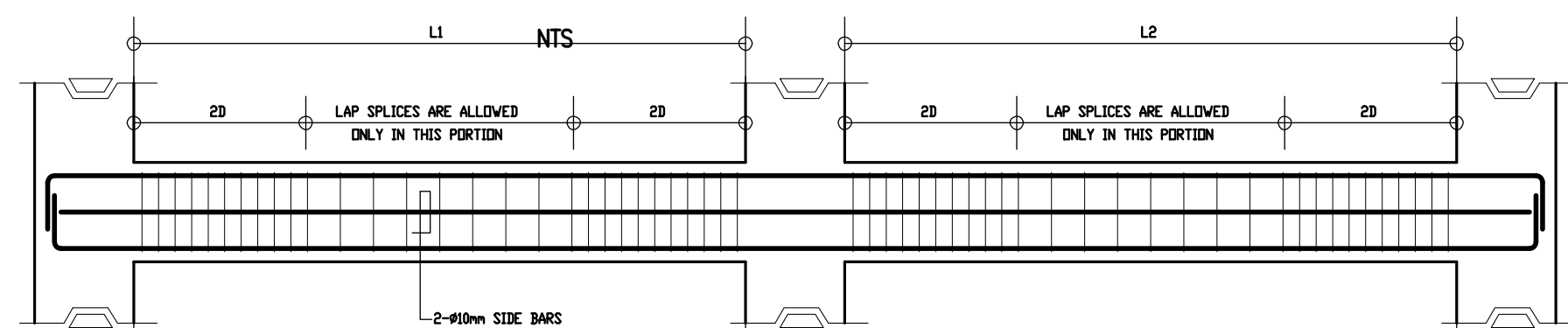
D
S-2
TYPICAL RAFTER ANCHORAGE DETAIL
SCALE



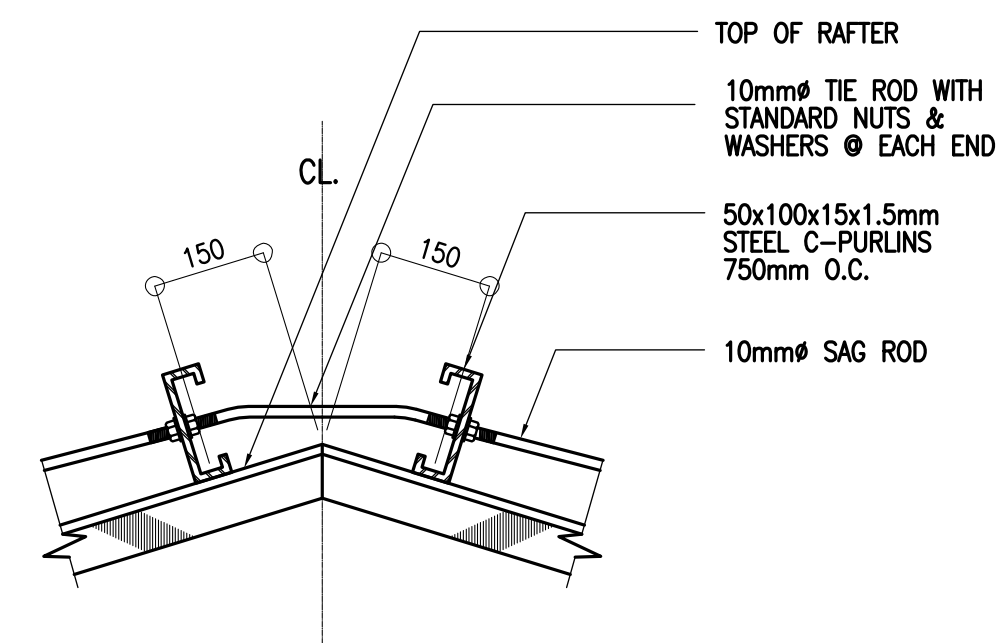
1
S-2
SECTION DETAIL
SCALE NTS



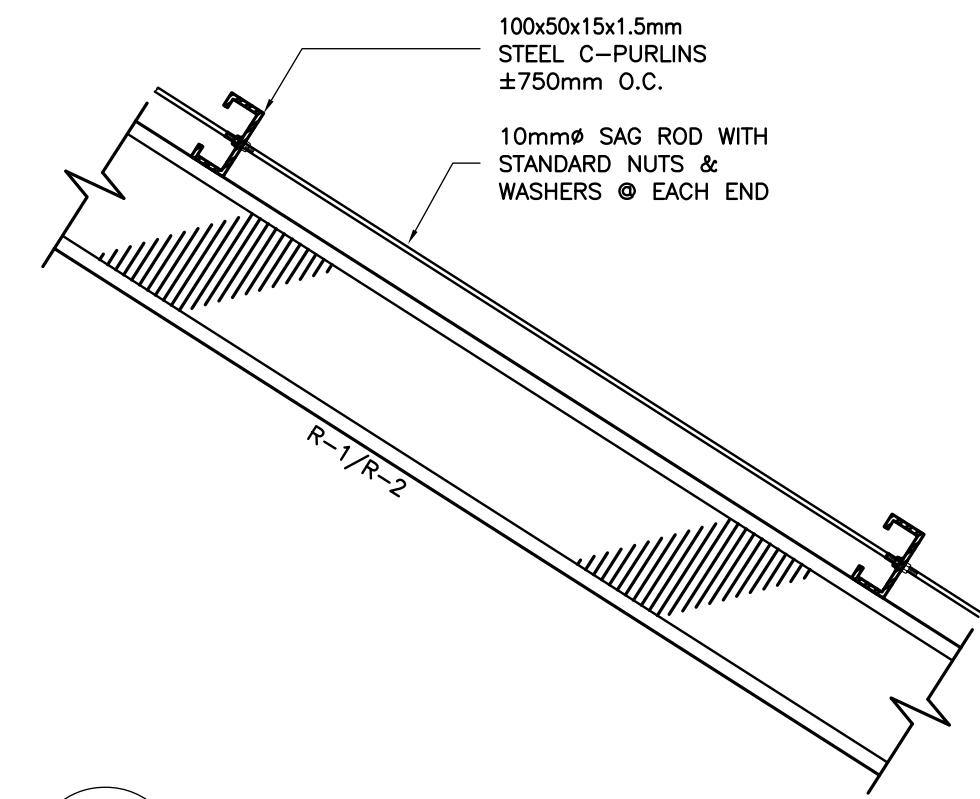
G
S-2
PURLIN CONNECTION DET
SCALE 1 : 5 M



C
S-2
TYPICAL BEAM ELEVATION



H
S-2
TIE ROD CONNECTION DET.
SCALE 1 : 10 M



I
S-2
SAG ROD CONNECTION DET.
SCALE 1 : 10 M

B E A M S C H E D U L E											
FLOOR LEVEL	BEAM MARK	BEAM DIMENSIONS (in / mm)		STEEL REINFORCEMENTS						STIRRUPS Ø10mm (UNLESS NOTED OTHERWISE)	
				REBAR (mm Ø)	LEFT		MID SPAN		RIGHT		
		b	h		TOP	BOTTOM	TOP	BOTTOM	TOP		BOTTOM
ROOF LEVEL	RG-1	150	400	Ø12mm	2	2	2	2	2	2	1Ø50, 8Ø100, REST@200
	RG-2	150	400	Ø12mm	2	2	2	2	2	2	1Ø50, 6Ø100, REST@200
	EB-1	150	250	Ø10mm	2	2	2	2	2	2	1Ø50, REST@200

REPUBLIC OF THE PHILIPPINES DepED DEPARTMENT OF EDUCATION PHYSICAL FACILITIES AND SCHOOLS ENGINEERING DIVISION MERALCO AVENUE, PASIG CITY		PREPARED BY : MAXIMINO M. CALBANG PDO - III PFSED-DepED	CHECKED BY : ANTONIA M. ALHAMBRA CIVIL ENGINEER/MASTER PLUMBER PFSED-DepED	RECOMMENDING APPROVAL : LUIS C. PURISIMA JR. HEAD, PLANNING AND DESIGN UNIT PFSED-DepED	APPROVED BY : OLIVER R. HERNANDEZ CHIEF, PFSED-OPS DepED	PROJECT TITLE : ONE STOREY THREE CLASSROOM 7x9m (MODIFIED) LOCATION :	PROJECT NO: 00200511 DESIGNED BY: AMA ENCODED BY: Max C. CHECKED BY: LGP DATE : 01 01 2005	OWNER : DEPARTMENT OF EDUCATION DepED SHEET CONTENTS : ELEVATIONS, BEAM DETAIL & SCHED. TYPICAL CONNECTION DETAIL	SHEET NO: S - 2 2
--	--	--	---	--	---	---	--	--	---------------------------------------

GENERAL NOTES

1. ALL ELECTRICAL WORKS SHALL COMPLY IN ACCORDANCE WITH THESE PLANS AND SPECIFICATIONS. THE APPLICABLE PROVISIONS OF THE LATEST EDITION OF THE PHILIPPINE ELECTRICAL CODE (PEC). THE RULES AND REGULATION OF THE LOCAL ENFORCING AUTHORITY AND THE REQUIREMENTS OF THE LOCAL POWER COMPANY. THE ELECTRICAL WORKS SHALL BE UNDER IMMEDIATE SUPERVISION OF A DULY REGISTERED ELECTRICAL ENGINEER.
2. THE ELECTRICAL SERVICE POWER IS 1-PHASE, 2-WIRE, 230 V AC, 60 Hz.
3. WIRING METHOD SHALL BE AS FOLLOWS :

a. FEEDERS AND RISERS - INTERMEDIATE METALLIC CONDUIT

b. LIGHTING, POWER RECEPTACLE - POLYVINYL CHLORIDE CONDUIT BRANCH CKT., & AUXILIARY SCH. 40
4. ALL WIRES SHALL BE COPPER AND THERMOPLASTIC INSULATED TYPE "THW" UNLESS OTHERWISE INDICATED IN THE PLAN. THE MINIMUM SIZE OF WIRE FOR POWER AND LIGHTING CIRCUIT HOMERUN SHALL BE 3.5mm² AND INSULATED FOR 600 VOLTS. SMALLEST RACEWAY SHALL BE 15mmØ TRADE/NOMINAL SIZE.
5. ALL OUTLET BOXES SHALL BE GALVANIZED GAUGE NO. 16 DEEP TYPE WITH FACTORY KNOCKOUTS.
6. ALL MATERIALS TO BE USED SHALL BE BRAND NEW AND APPROVED TYPE FOR THE PARTICULAR LOCATION AND PURPOSE OF USAGE.
7. GROUNDING SYSTEM SHALL BE PROVIDED TO ALL LIGHTING AND POWER CIRCUIT AS PER PHILIPPINE ELECTRICAL CODE REQUIREMENT.
8. MOUNTING HEIGHT OF WIRING DEVICES SHALL BE AS FOLLOWS :

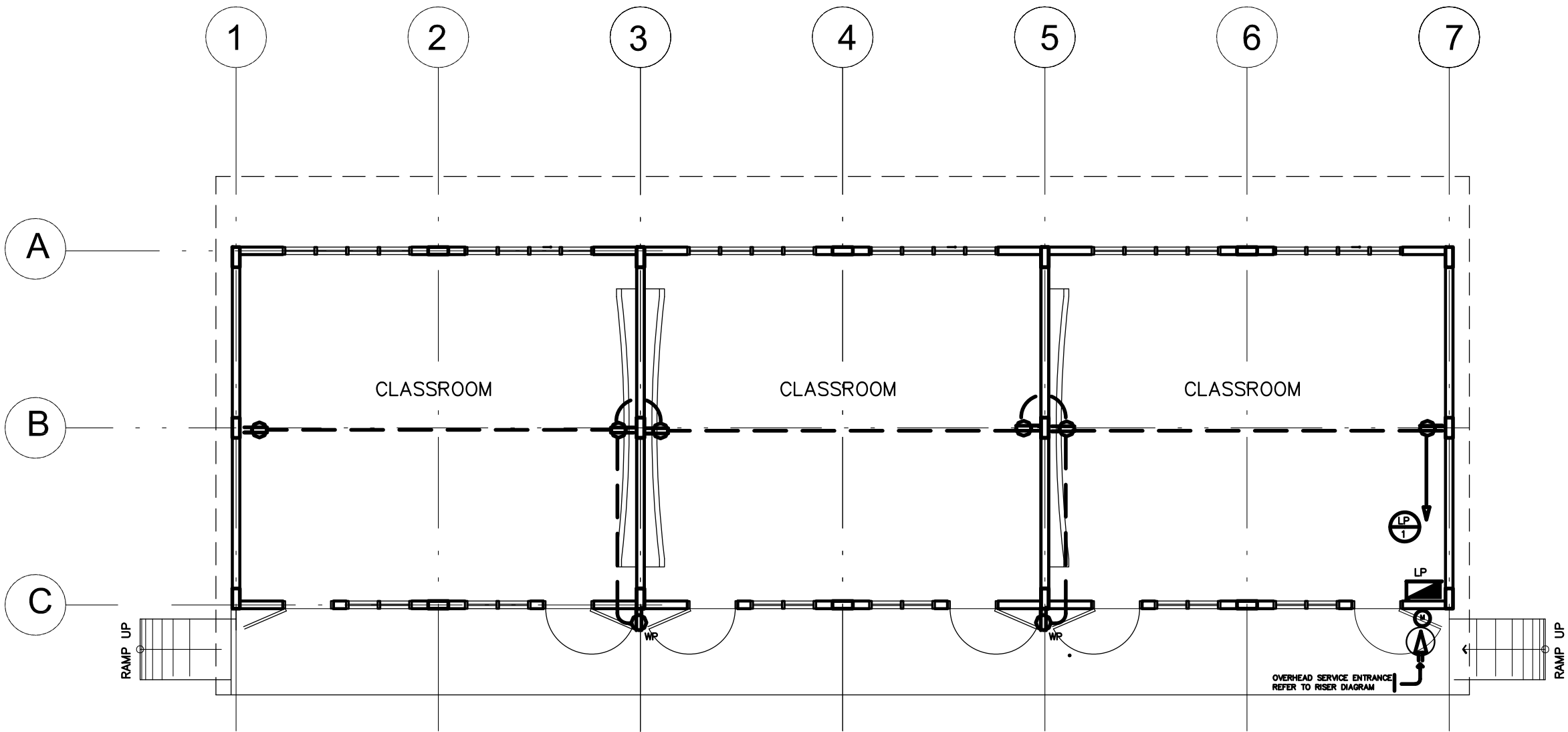
a. LIGHT SWITCH - 1.20 M ABOVE FINISH FLOOR

b. CONVENIENCE OUTLET - 0.30 M ABOVE FINISH FLOOR.

c. PANELBOARD - 1.80 M ABOVE FINISH FLOOR

LEGEND

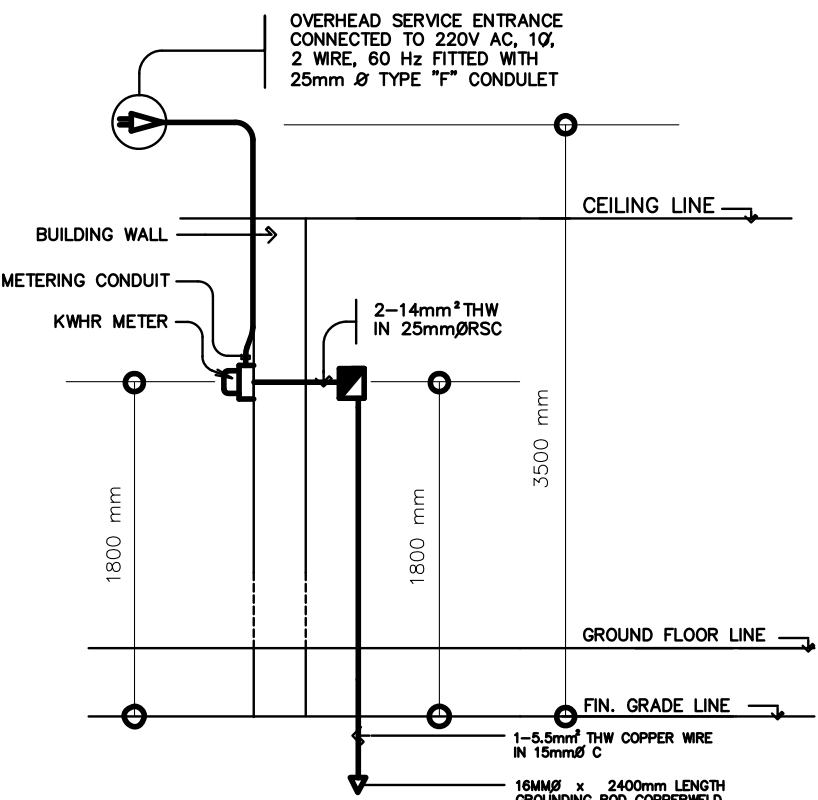
SYMBOL	DESCRIPTION
	- CEILING LIGHT OUTLET
	- 2 x 40 WATTS FLUORESCENT LAMP
	- CEILING FAN OUTLET
S/Sa	- ONE GANG DEVICE SWITCH
Sab	- TWO GANG DEVICE SWITCH
Scde	- THREE GANG DEVICE SWITCH
S3W	- THREE WAY DEVICE SWITCH
Sf	- FAN CONTROL SWITCH
	- RACEWAY CONDUIT CONCEALED IN CEILING
	- RACEWAY CONDUIT CONCEALED UNDER FLOOR
	- PANELBOARD
	- DUPLEX CONVENIENCE OUTLET, GROUNDING TYPE 10 AMPS, 250 VOLT WITH MODERN PLATE COVER
	- WEATHERPROOF TYPE DUPLEX CONVENIENCE OUTLET, GROUNDING TYPE 10 AMPS, 250 VOLT WITH MODERN PLATE COVER
	- HOMERUN DIRECT TO PANELBOARD
	- CIRCUIT BREAKER, RATING AS INDICATED
	- ELECTRIC SERVICE METER
	- SERVICE ENTRANCE



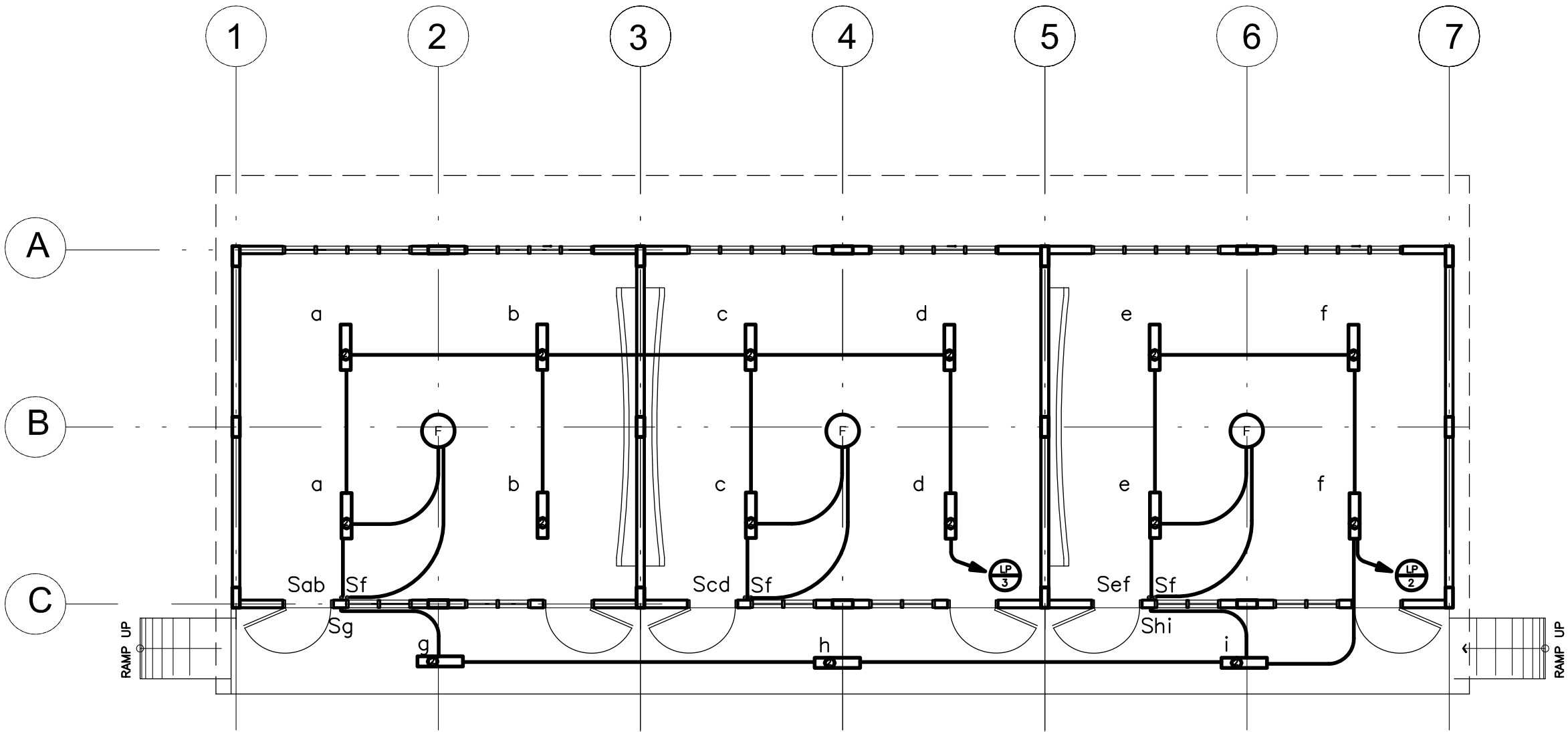
POWER LAYOUT
SCALE 1:100 M

LOAD SCHEDULE

PANELBOARD: LP			MAIN : 60AT, 100AF, 2P, 230V				
CKT. NO.	DESCRIPTION	VA LOAD	CIRCUIT BREAKER				WIRE & CONDUIT SIZE
			VOLT	POLE	AT	AF	
1	CONV. OUTLET – 8 x 180W	1440	230	2	20	50	3–3.5mm ² THW IN 15mm ØC
2	LIGHTING OUTLET – 8 x 100W	800	230	2	20	50	3–3.5mm ² THW IN 15mm ØC
3	LIGHTING OUTLET – 10 x 100W	1000	230	2	20	50	3–3.5mm ² THW IN 15mm ØC
4	S P A R E	1500	230	2	20	50	_____
TOTAL		4740					
IL = $\frac{4740}{230\text{ V}}$ = 20.6 A			FEEDER: 2–14mm ² THW IN 25mm ØC PROTECTION: 60 AT, 100 AF, 2P, 230 V				



ELECTRICAL RISER DIAGRAM
NOT TO SCALE



LIGHTING LAYOUT
SCALE 1:100 M

<div>REPUBLIC OF THE PHILIPPINES</div> <div>DepED</div> <div>DEPARTMENT OF EDUCATION</div> <div>PHYSICAL FACILITIES AND SCHOOLS ENGINEERING DIVISION</div> <div>MERALCO AVENUE, PASIG CITY</div>	PREPARED BY : <div>Maximo M. Calbang</div> <div>PDO - III</div> <div>PFSED-DepED</div>	CHECKED BY : <div>Venerando D. Sahagun</div> <div>ENGINEER III</div> <div>PFSED-DepED</div>	RECOMMENDING APPROVAL : <div>Luis C. Purisima Jr.</div> <div>HEAD, PLANNING AND DESIGN UNIT</div> <div>PFSED-DepED</div>	APPROVED BY : <div>Oliver R. Hernandez</div> <div>CHIEF, PFSED-OPS</div> <div>DepED</div>	PROJECT TITLE : <div>ONE STOREY THREE CLASSROOM</div> <div>7x9m (MODIFIED)</div> <div>LOCATION :</div>	PROJECT NO: 00200511 DESIGNED BY: VDS ENCODED BY: Max C. CHECKED BY: LGP DATE : 01 01 2005	OWNER : <div>DEPARTMENT OF EDUCATION</div> <div>DepED</div> <div>SHEET CONTENTS :<div>LEGEND</div><div>GENERAL NOTES</div><div>POWER LAYOUT</div><div>LOAD SCHEDULE</div><div>RISER DIAGRAM</div></div>	SHEET NO: <div>E -1</div> <div>1</div>

NOTE: THIS DRAWING, AS AN INSTRUMENT OF SERVICE IS THE PROPERTY OF PHYSICAL FACILITIES AND SCHOOLS ENGINEERING DIVISION AND AS SUCH MUST NOT BE REPRODUCED OR COPIED IN PART OR IN WHOLE WITHOUT THEIR PERMISSION. ALL DRAWINGS ARE TO BE RETURNED WHEN NO LONGER IN USE.

REP. ACT 545