



1
A-1
PERSPECTIVE VIEW
SCALE: NTS

REPUBLIC OF THE PHILIPPINES
OFFICE OF THE CITY/MUNICIPAL
ENGINEER/BUILDING OFFICIAL

DISTRICT/CITY/MUNICIPALITY

- ARCHITECTURAL**
A-1 PERSPECTIVE VIEW, TABLE OF
CONTENTS

A-2 FLOOR PLAN, ELEVATIONS, CROSS
SECTION

A-3 CEILING & ROOF PLANS,
LONGITUDINAL SECTION

A-4 SCHEDULE OF DOOR & WINDOWS,
BAY SECTION, DETAIL SECTION,
LOUVER BLOCK VENT., RAMP
DETAIL

LAND USE & ZONING

LINE & GRADE

ARCHITECTURAL

- STRUCTURAL**
S-1 FOUNDATION PLAN, ROOF
FRAMING PLAN FOOTING DETAIL,
COLUMN DETAIL, WF-1, RAMP
DETAIL

S-2 ELEVATIONS TYPICAL
CONNECTION DETAIL

STRUCTURAL

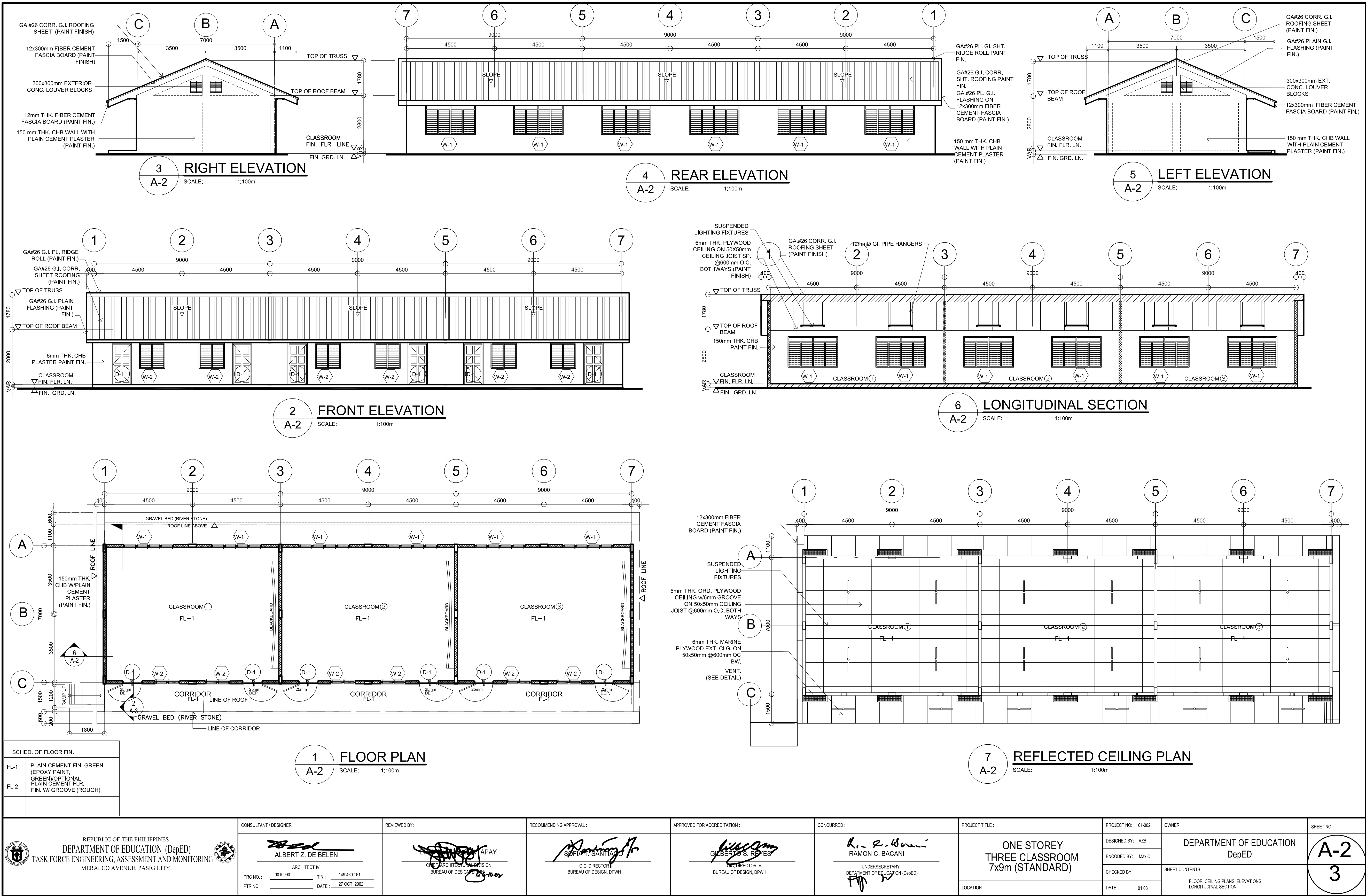
- ELECTRICAL**
E-1 ELECTRICAL LAYOUT PLAN, RISER
DIAGRAM, LOAD SCHEDULE, GEN.
NOTES

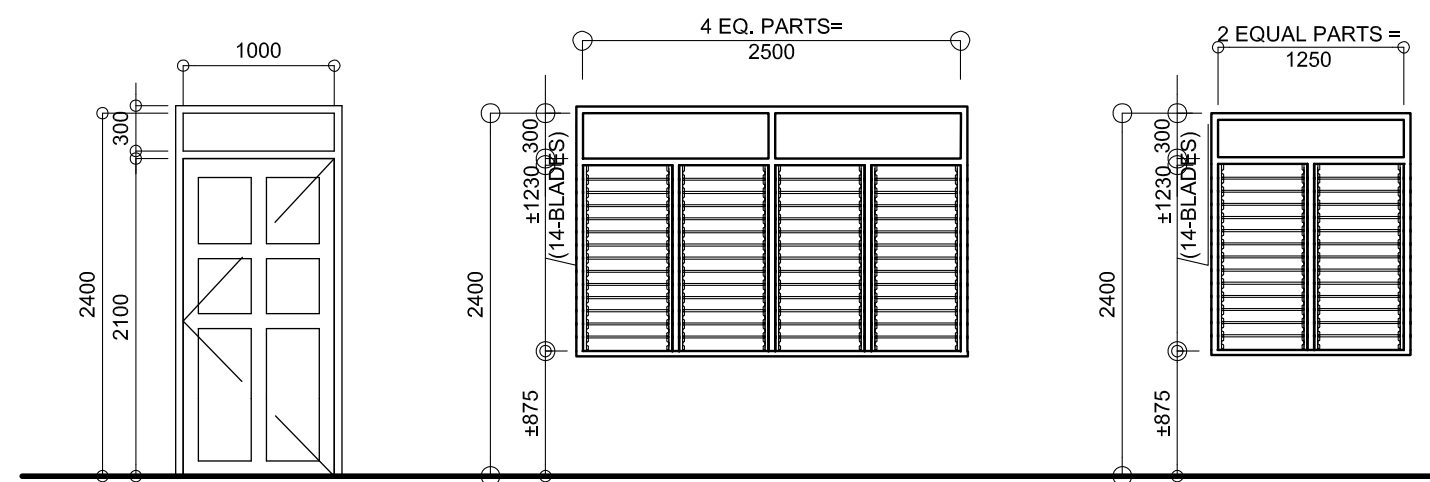
SANITARY

ELECTRICAL

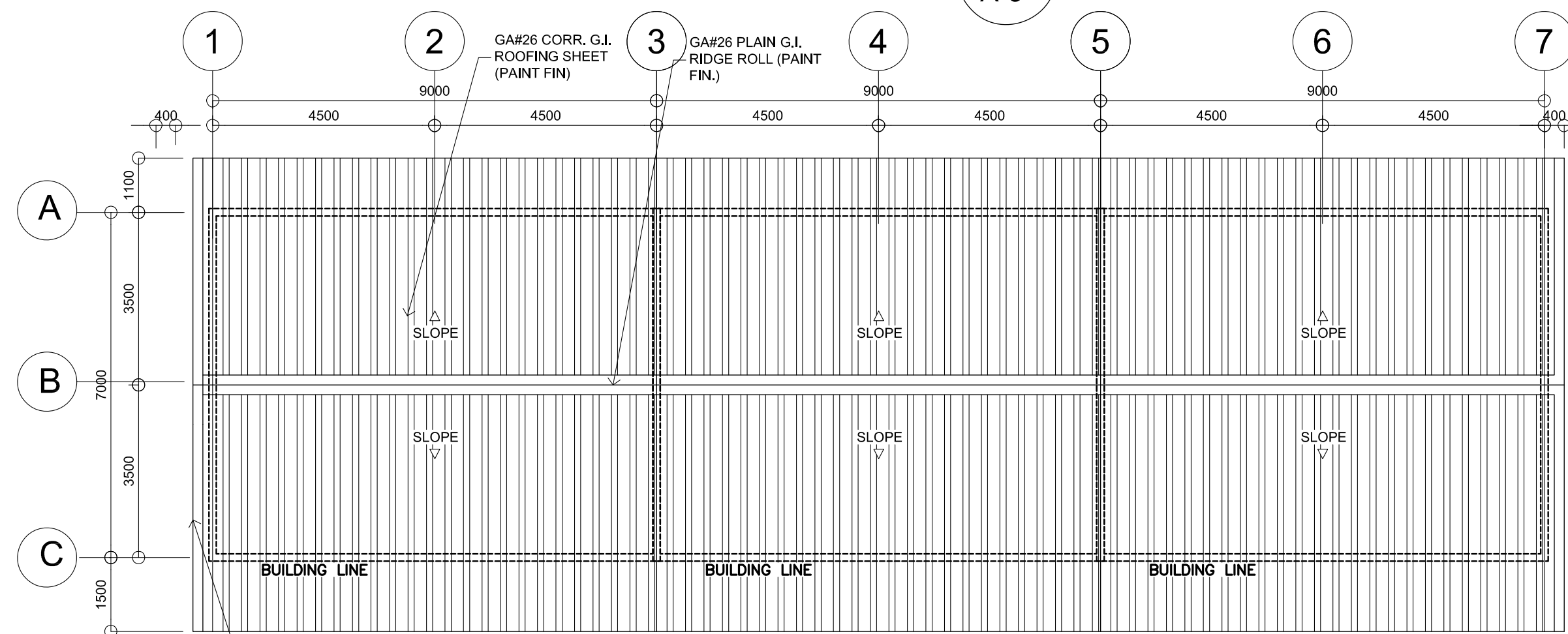
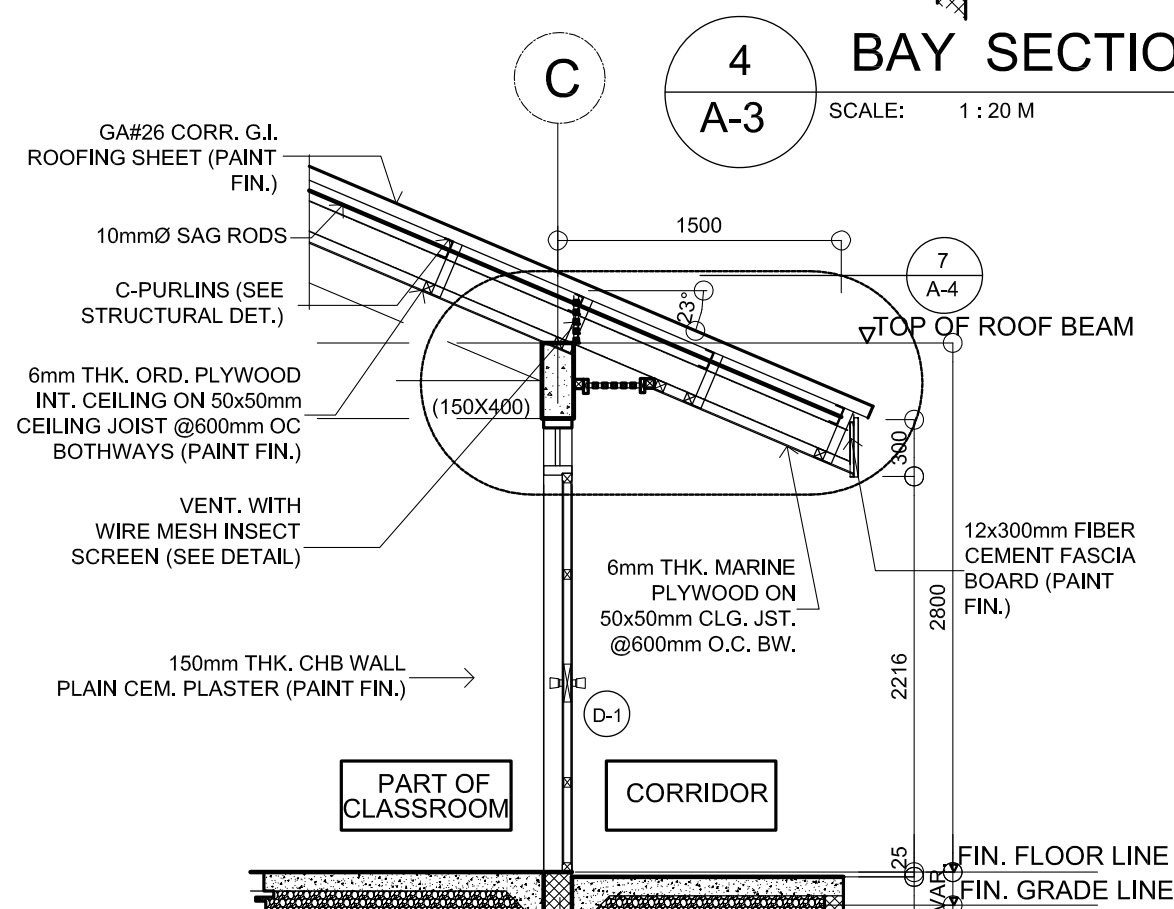
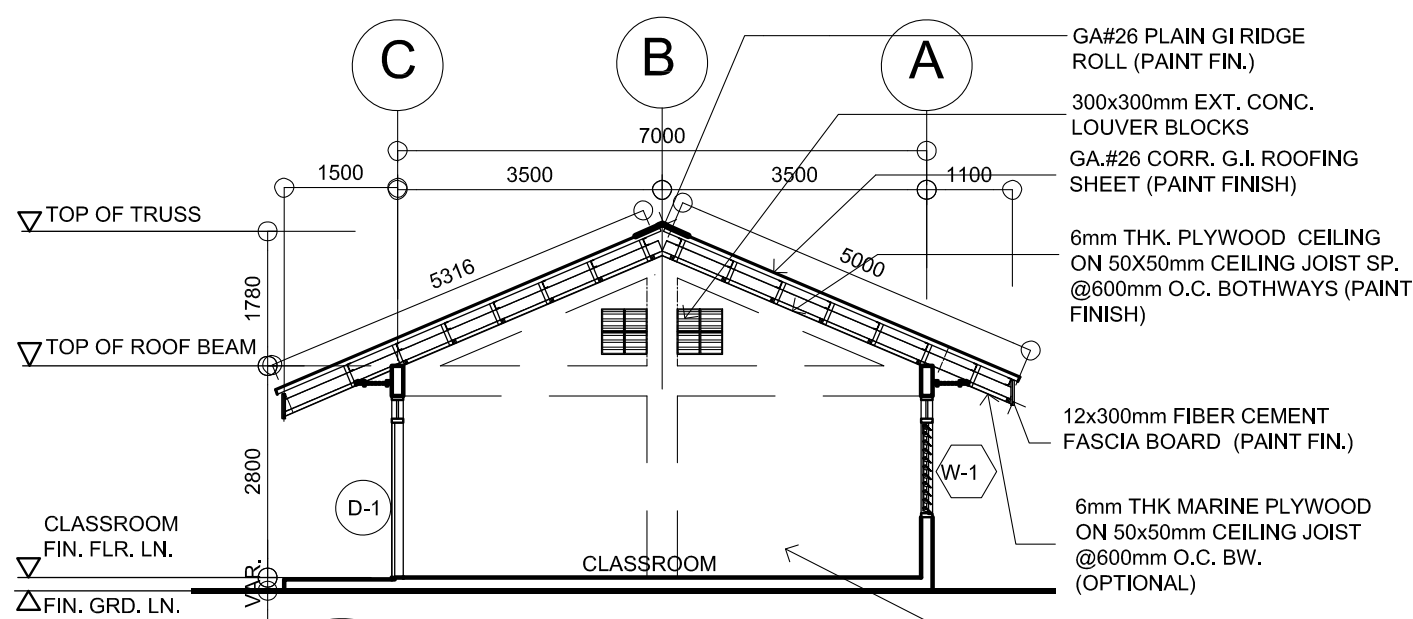
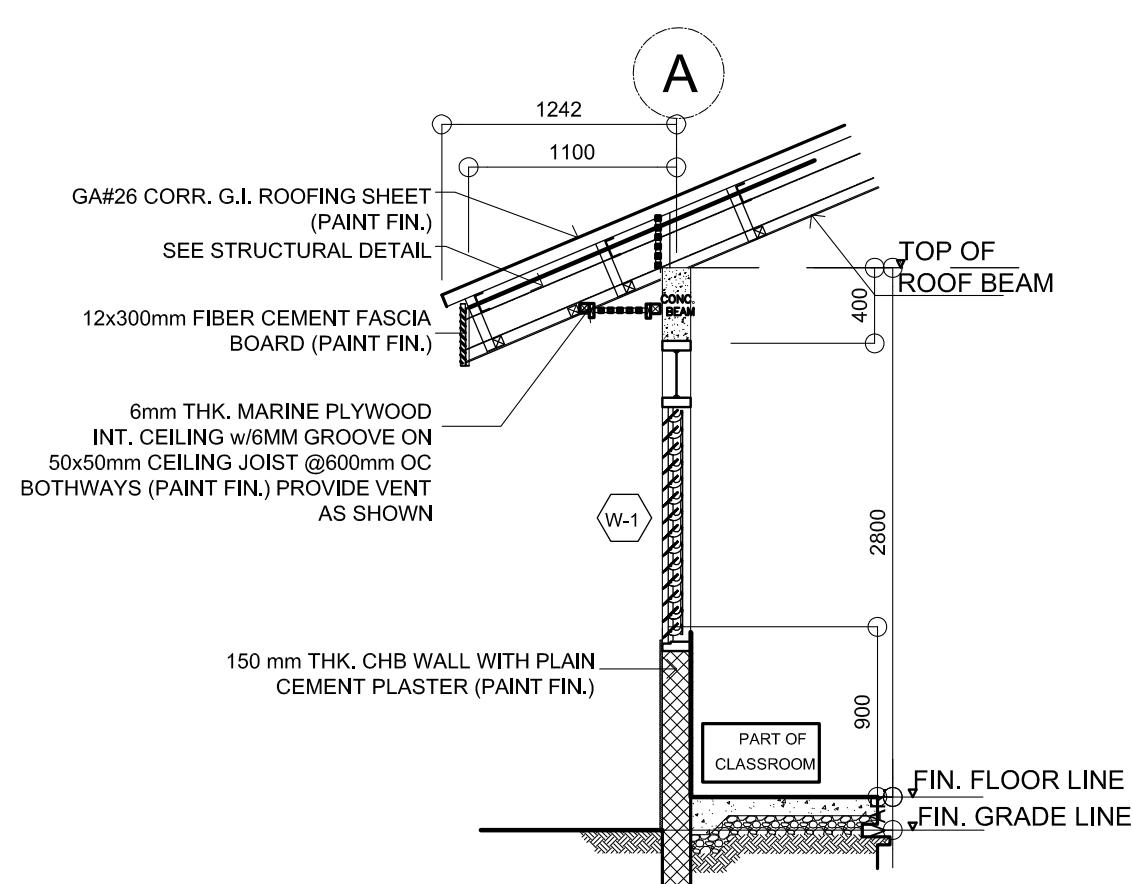
MECHANICAL

SANITARY

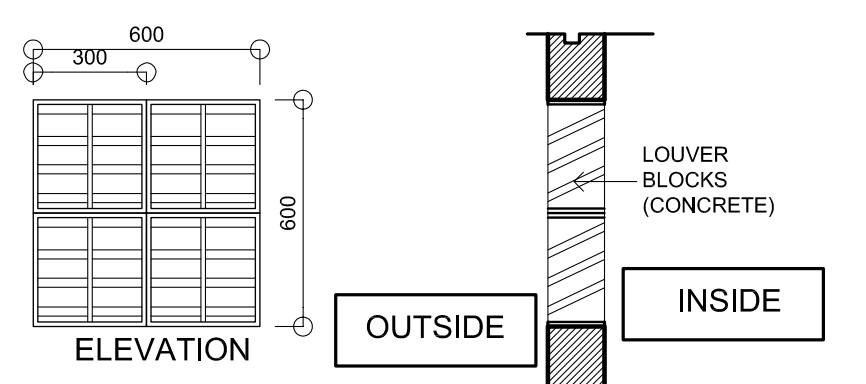
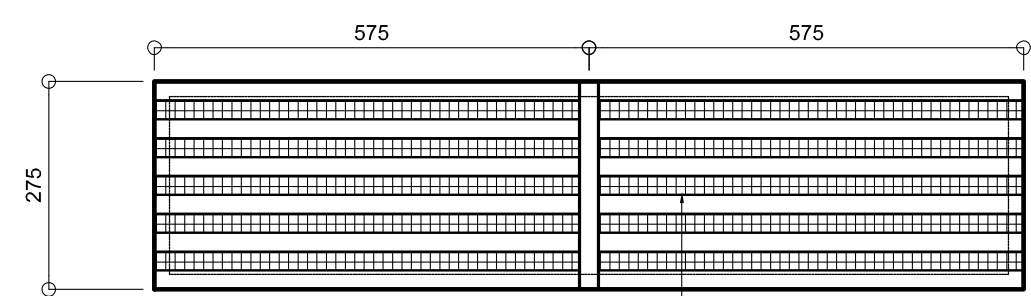
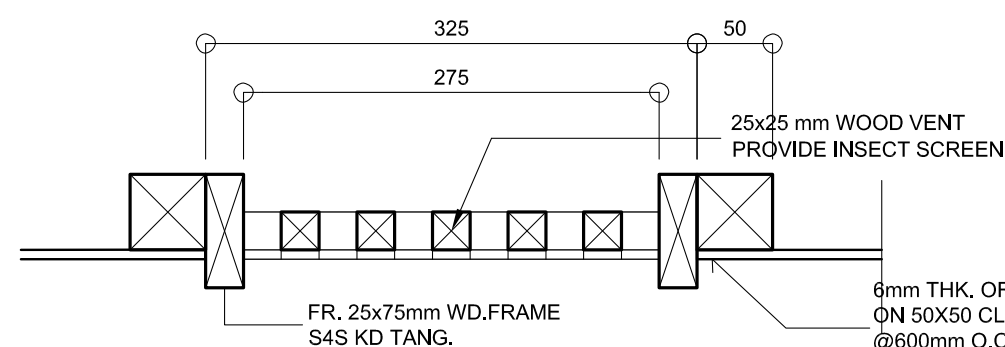




3 SCHEDULE OF DOORS & WINDOWS
SCALE: 1:100 M

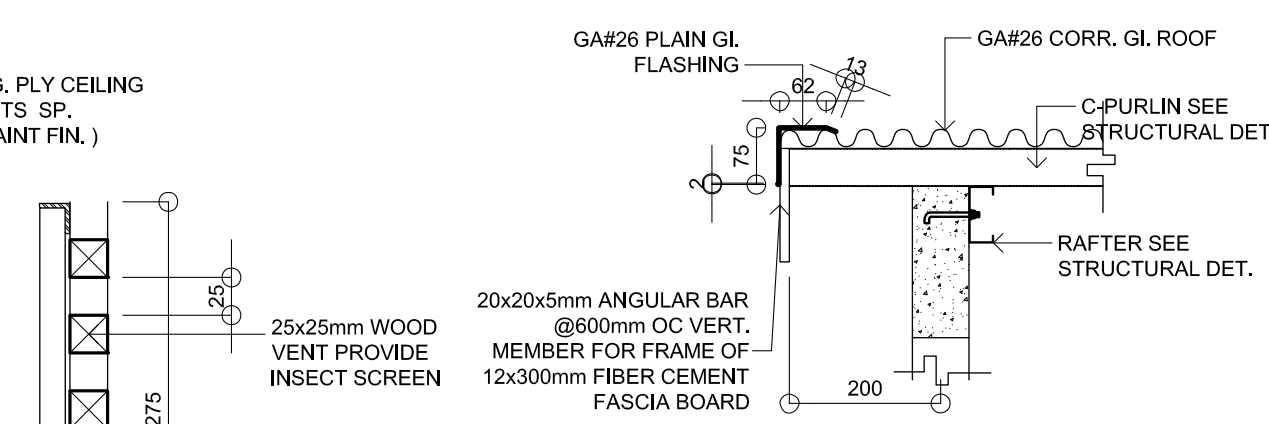


9 DETAIL
SCALE: 1:10mts

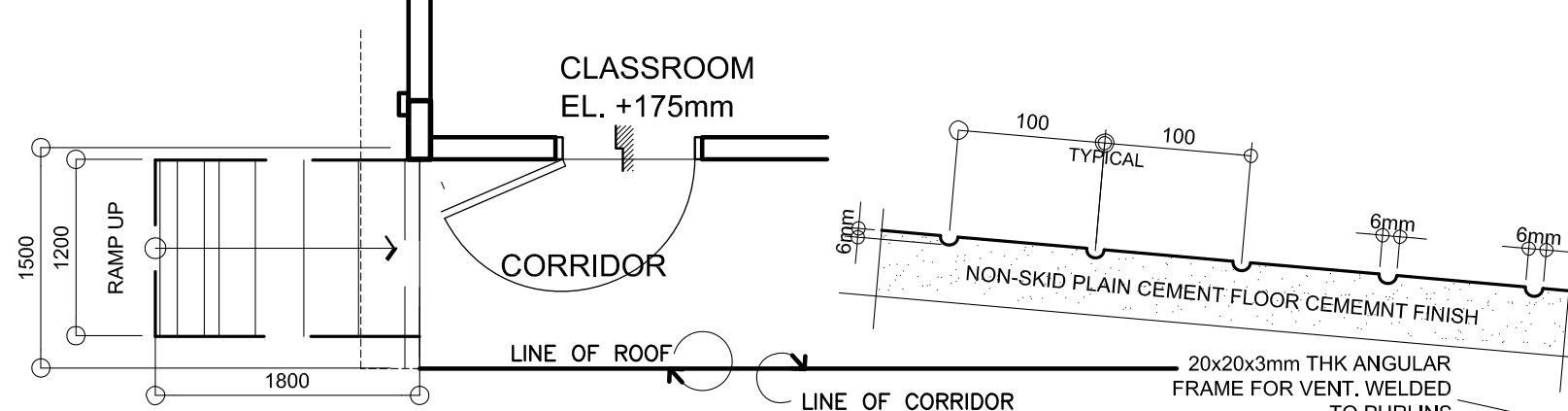


8 EAVES, VENT. & INT CEILING DETAIL
SCALE: 1:10mts

NOTE:
1. IF THERE'S EXTERIOR CEILING PROVIDE V2.
2. IF THERE'S NO EXTERIOR CEILING PROVIDE V1.







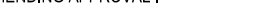
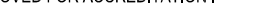



SECTION (V2)



<p>REPUBLIC OF THE PHILIPPINES DEPARTMENT OF EDUCATION (DepED) TASK FORCE ENGINEERING, ASSESSMENT AND MONITORING MERALCO AVENUE, PASIG CITY</p>	<p>CONSULTANT / DESIGNER ALBERT Z. DE BELEN ARCHITECT IV PRC NO.: 0010990 TIN: 149 460 161 PTR NO.: DATE: 27 OCT. 2002</p>	<p>REVIEWED BY: ALFONSO J. APAY CHIEF ARCHITECTURAL DIVISION BUREAU OF DESIGN, DPWH</p>	<p>RECOMMENDING APPROVAL: SOFIA T. SANTIAGO OIC, DIRECTOR III BUREAU OF DESIGN, DPWH</p>	<p>APPROVED FOR ACCREDITATION: GILBERTO S. REYES OIC, DIRECTOR IV BUREAU OF DESIGN, DPWH</p>	<p>CONCURRED: RAMON C. BACANI UNDERSECRETARY DEPARTMENT OF EDUCATION (DepED)</p>	<p>PROJECT TITLE: ONE STOREY THREE CLASSROOM 7x9m (STANDARD) LOCATION:</p>	<p>PROJECT NO.: 01-002 DESIGNED BY: AZB ENCODED BY: Max C CHECKED BY: DATE: 01 03</p>	<p>OWNER: DEPARTMENT OF EDUCATION DepED SHEET CONTENTS: ROOF PLAN, SCH. OF DOORS & WINDOWS BAY & DETAIL SECTION, EAVES, LOUVER BLK, VENT., RAMP DET.</p>	<p>SHEET NO.: A-3 3</p>
---	---	--	---	---	---	---	---	---	--

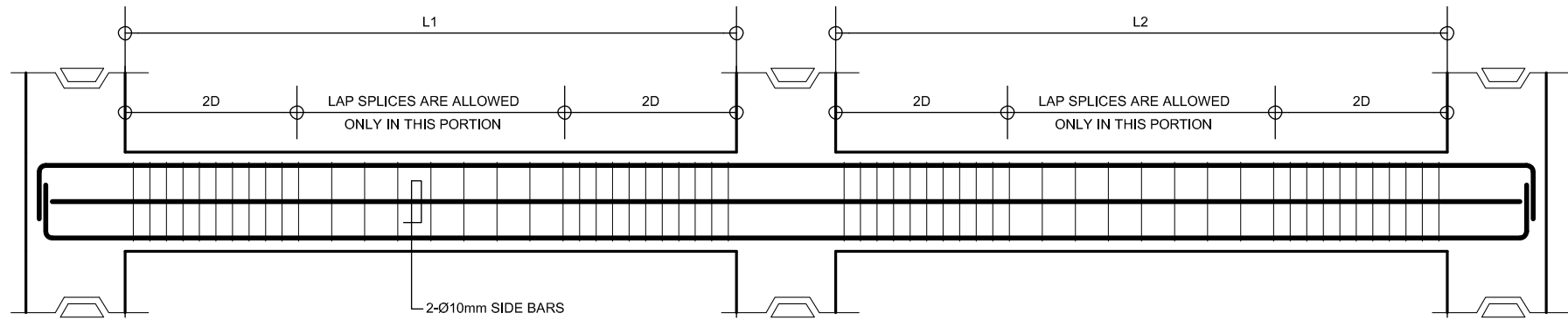
NOTE: THIS DRAWING, AS AN INSTRUMENT OF SERVICE IS THE PROPERTY OF TASK FORCE ENGINEERING, ASSESSMENT AND MONITORING AND AS SUCH MUST NOT BE REPRODUCED OR COPIED IN PART OR IN WHOLE WITHOUT THEIR PERMISSION. ALL DRAWINGS ARE TO BE RETURNED WHEN NO LONGER IN USE.



<div><div></div><div><p>REPUBLIC OF THE PHILIPPINES</p><p>DEPARTMENT OF EDUCATION (DepED)</p><p>TASK FORCE ENGINEERING, ASSESSMENT AND MONITORING</p><p>MERALCO AVENUE, PASIG CITY</p></div><div></div></div>	CONSULTANT / DESIGNER	REVIEWED BY:	RECOMMENDING APPROVAL :	APPROVED FOR ACCREDITATION :	CONCURRED :	PROJECT TITLE :	PROJECT NO: 01-002	OWNER :	SHEET NO:	
	<div><div></div><div><p>ALBERT Z. DE BELEN</p></div></div>	<div><div></div><div><p>ENGR. ERIKA M. ZAPAY</p></div></div>	<div><div></div><div><p>SOFIA T. SANTIAGO</p></div></div>	<div><div></div><div><p>GILBERT S. REYES</p></div></div>	<div><div></div><div><p>RAMON C. BACANI</p></div></div>	<div><div></div><div><p>RAMON C. BACANI</p></div></div> <div><p>UNDERSECRETARY</p><p>DEPARTMENT OF EDUCATION (DepED)</p></div> <div></div>	THREE STOREY TWO CLASSROOM 7x9m (STANDARD)	DESIGNED BY: AZB	DEPARTMENT OF EDUCATION DepED	<div>S-1</div> <div>3</div>
	ARCHITECT IV	CHIEF ARCHITECTURAL DIVISION	CHIEF, DIRECTOR III	CHIEF, DIRECTOR IV	ENCODED BY: Max C					
	PRC NO.: 0010990 TIN: 149 460 161	BUREAU OF DESIGN, DPWH	BUREAU OF DESIGN, DPWH	BUREAU OF DESIGN, DPWH	CHECKED BY:		SHEET CONTENTS: FOUNDATION PLAN ROOF FRAMING PLAN			
PTR NO.: DATE: 27 OCT. 2002				DATE: 01 03						

NOTE: THIS DRAWING, AS AN INSTRUMENT OF SERVICE IS THE PROPERTY OF TASK FORCE ENGINEERING, ASSESSMENT AND MONITORING AND AS SUCH MUST NOT BE REPRODUCED OR COPIED IN PART OR IN WHOLE WITHOUT THEIR PERMISSION, ALL DRAWINGS ARE TO BE RETURNED WHEN NO LONGER IN USE.

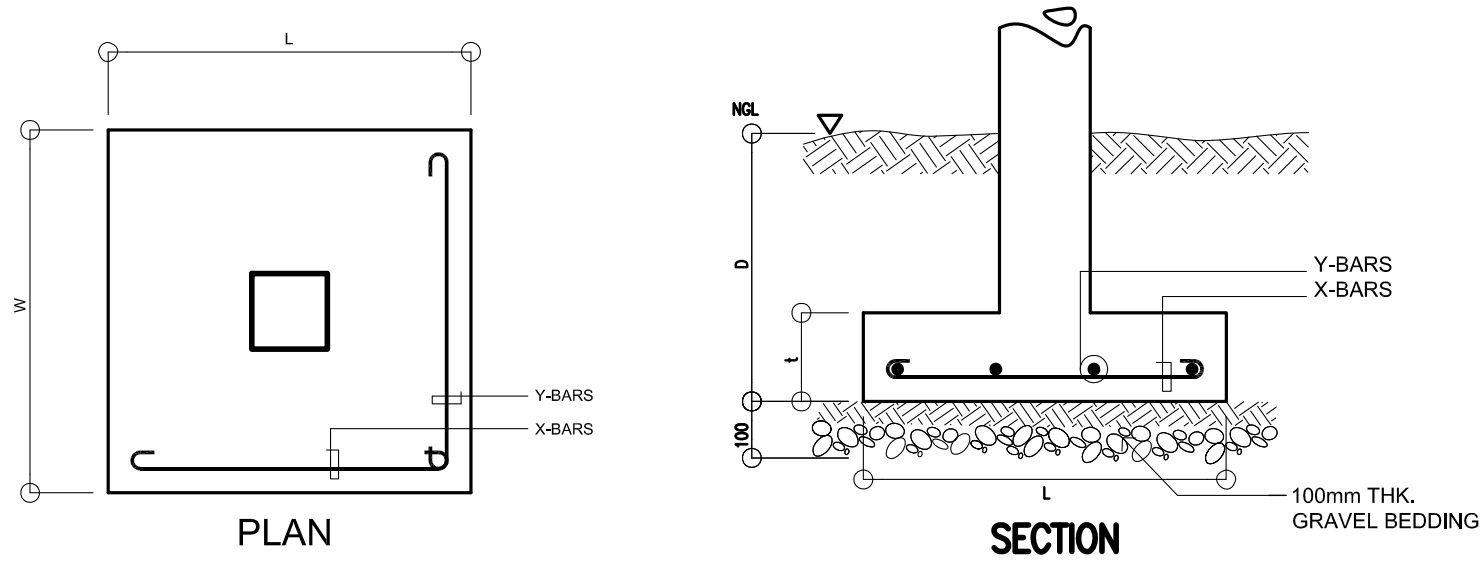
CT 545



A
S-2
TYPICAL BEAM ELEVATION

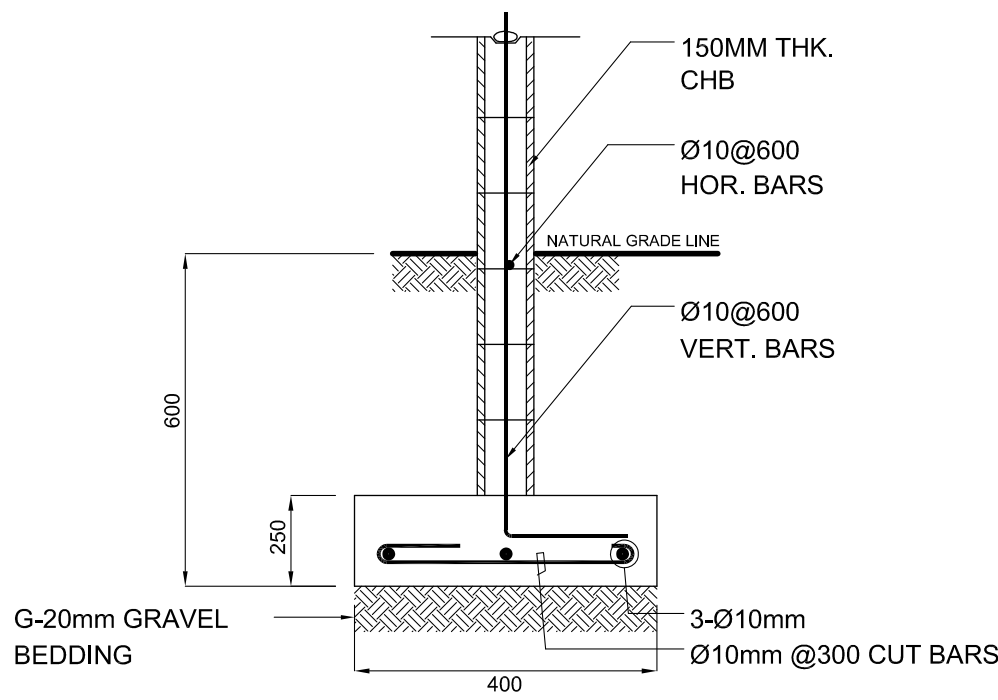
B E A M S C H E D U L E											
FLOOR LEVEL	BEAM MARK	BEAM DIMENSIONS (in / mm)		STEEL REINFORCEMENTS						STIRRUPS Ø10mm (UNLESS NOTED OTHERWISE)	
		b	h	REBAR (mm Ø)	LEFT		MID SPAN		RIGHT		
					TOP	BOTTOM	TOP	BOTTOM	TOP	BOTTOM	
ROOF LEVEL	RG-1	150	400	Ø12mm	2	2	2	2	2	2	1@50, 8@100, REST@200
	RG-2	150	400	Ø12mm	2	2	2	2	2	2	1@50, 6@100, REST@200
											1@50, 6@100, REST@200
	EB-1	150	250	Ø10mm	2	2	2	2	2	2	1@50, REST@200

C O L U M N S C H E D U L E		
LEVEL	C-1	C-2
FOUNDATION LEVEL TO ROOF LEVEL	<p>MAIN BAR: 4-Ø16mm TIES : Ø10 mm 1@50, 8@75, REST @ 150mm TO CENTER</p>	<p>MAIN BAR: 6-Ø16mm TIES : Ø10 mm 1@50, 8@75, REST @ 150mm TO CENTER</p>

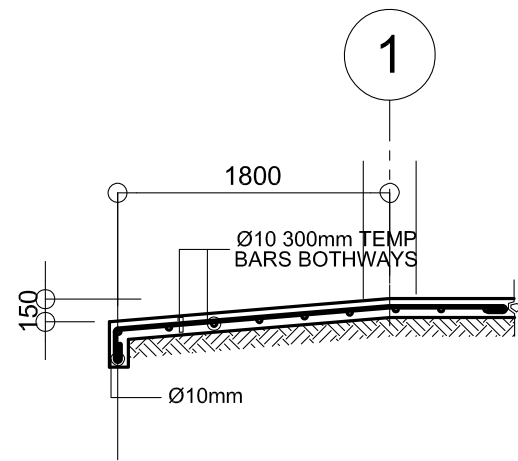


B
S-2
TYP. FOOTING DETAIL
SCALE : NTS

S C H E D U L E O F F O O T I N G S							
FOOTING MARK	FOOTING DIMENSIONS (mm)				REINFORCEMENT		REMARKS
	LENGTH (L)	WIDTH (W)	DEPTH (D)	THICKNESS (t)	BAR X	BAR Y	
F-1	800	800	1200	250	4 - 16mmØ	4 - 16mmØ	SQUARE FOOTING
F-2	1000	1000	1200	250	4 - 16mmØ	4 - 16mmØ	SQUARE FOOTING
F-3	900	900	1200	250	4 - 16mmØ	4 - 16mmØ	SQUARE FOOTING



C
S-2
DETAIL OF WF-1
SCALE : NTS.

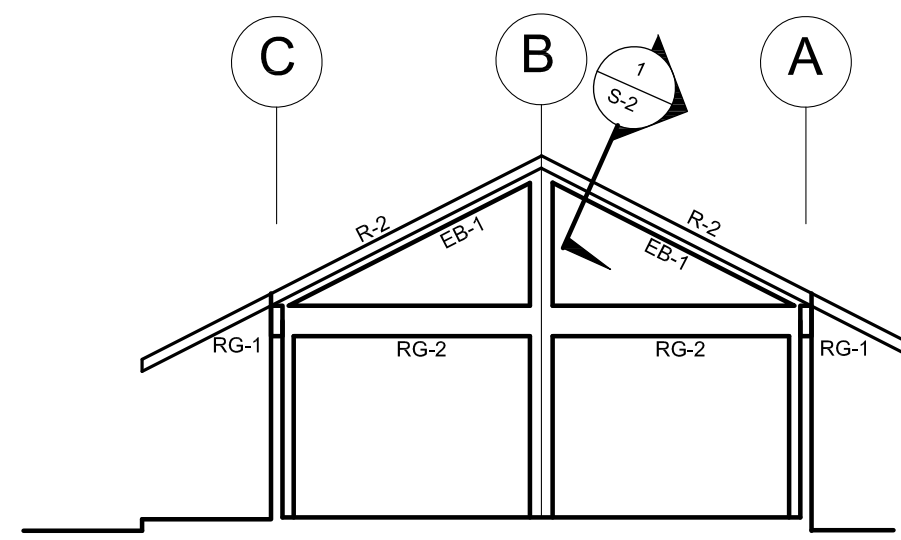


D
S-2
DETAIL OF RAMP
SCALE 1 : 50M

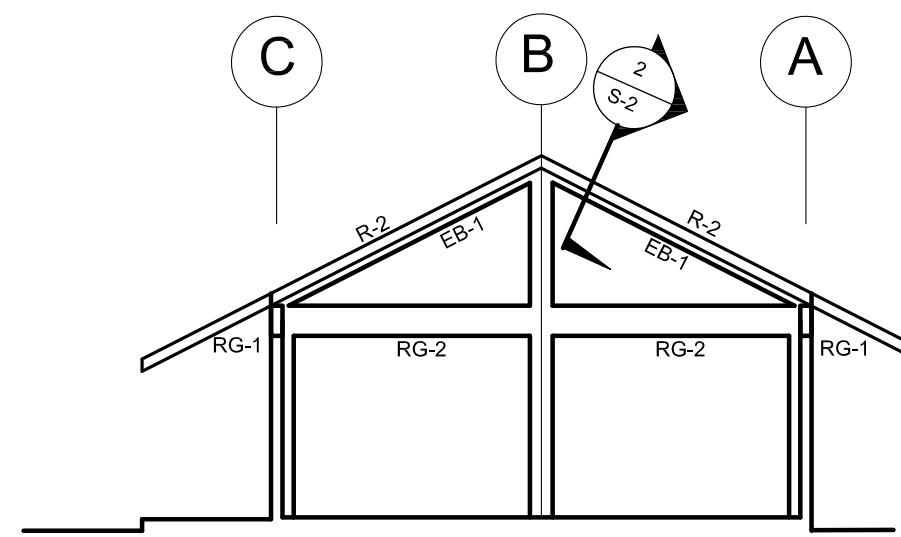
- DESIGN CRITERIA :
- A. CONCRETE
 $f_c' = 20.685 \text{ Mpa (3,000 Psi)}$, minimum compressive strength of concrete a 28 days unless otherwise specified.
 - B. REBAR
 $f_y = 275.8 \text{ Mpa (40,000 Psi)}$, minimum yield strength of reinforcing bars unless otherwise specified.
 - C. STRUCTURAL STEEL
 $F_y = 248 \text{ Mpa (36 Ksi)}$, specified minimum yield strength unless otherwise specified.
 - D. FOUNDATION
 $SBP = 95.706 \text{ Kpa (2,000 Psf)}$, was used in the design for all footings. No footing shall rest on fill.

<p>REPUBLIC OF THE PHILIPPINES DEPARTMENT OF EDUCATION (DepED) TASK FORCE ENGINEERING, ASSESSMENT AND MONITORING MERALCO AVENUE, PASIG CITY</p>	CONSULTANT / DESIGNER	REVIEWED BY:	RECOMMENDING APPROVAL :	APPROVED FOR ACCREDITATION :	CONCURRED :	PROJECT TITLE :	PROJECT NO. : 01-002	OWNER :	SHEET NO.:
	 ALBERT Z. DE BELEN	 ENGR. J. J. JAPAY	 SOFIA T. SANTIAGO	 GILBERTO S. REYES	 RAMON C. BACANI	ONE STOREY THREE CLASSROOM 7x9m (STANDARD)	DESIGNED BY: AZB	DEPARTMENT OF EDUCATION DepED	
	ARCHITECT IV PRC NO. : 0010990 TIN : 149 460 161 PTR NO. : DATE : 27 OCT. 2002	CHIEF ARCHITECTURAL DIVISION BUREAU OF DESIGN, DPWH	OIC, DIRECTOR III BUREAU OF DESIGN, DPWH	OIC, DIRECTOR IV BUREAU OF DESIGN, DPWH	UNDERSECRETARY DEPARTMENT OF EDUCATION (DepED)	LOCATION :	ENCODED BY: Max C	SHEET CONTENTS : TYPICAL BEAM DETAIL, BEAM SCHEDULE, FOOTING DETAIL, COLUMN DETAIL, WF-1, RAMP DET.	
							CHECKED BY:	DATE : 01 03	

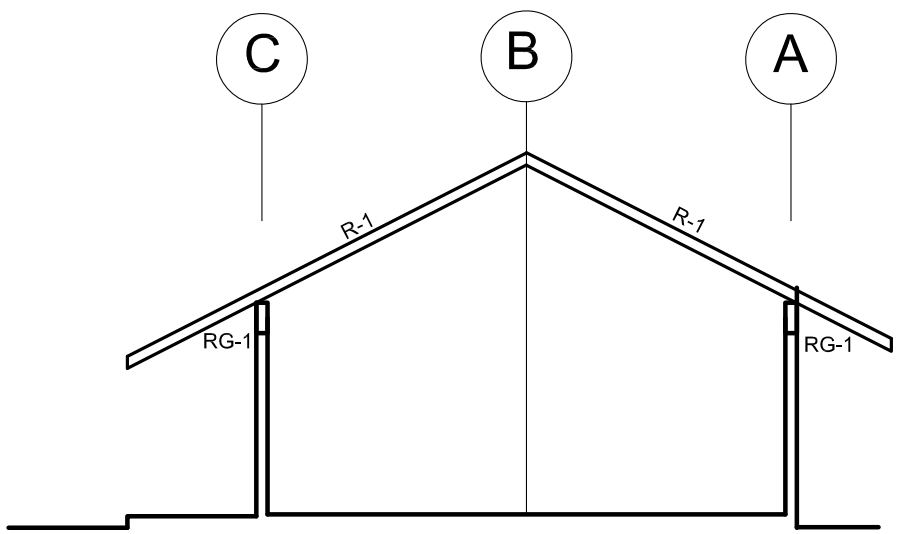
NOTE: THIS DRAWING, AS AN INSTRUMENT OF SERVICE IS THE PROPERTY OF TASK FORCE ENGINEERING, ASSESSMENT AND MONITORING AND AS SUCH MUST NOT BE REPRODUCED OR COPIED IN PART OR IN WHOLE WITHOUT THEIR PERMISSION. ALL DRAWINGS ARE TO BE RETURNED WHEN NO LONGER IN USE.



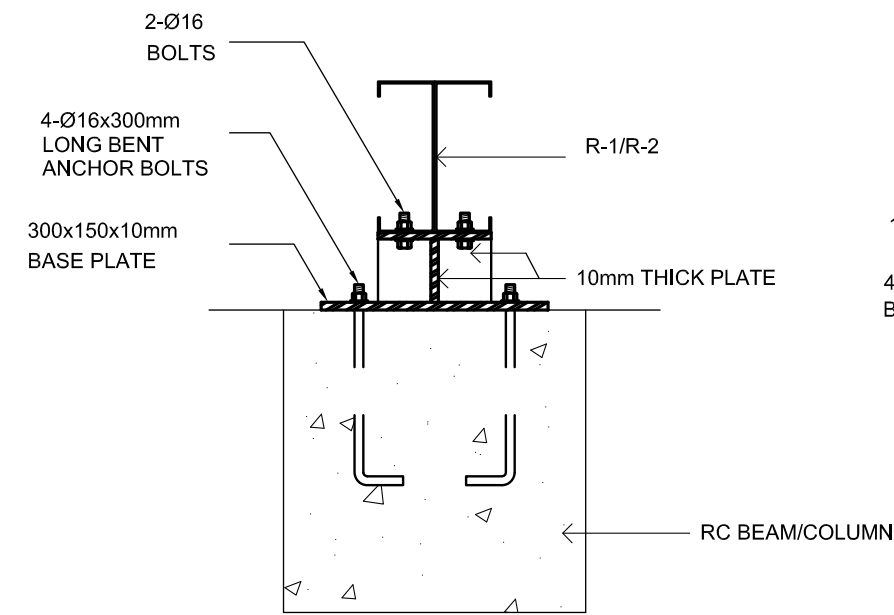
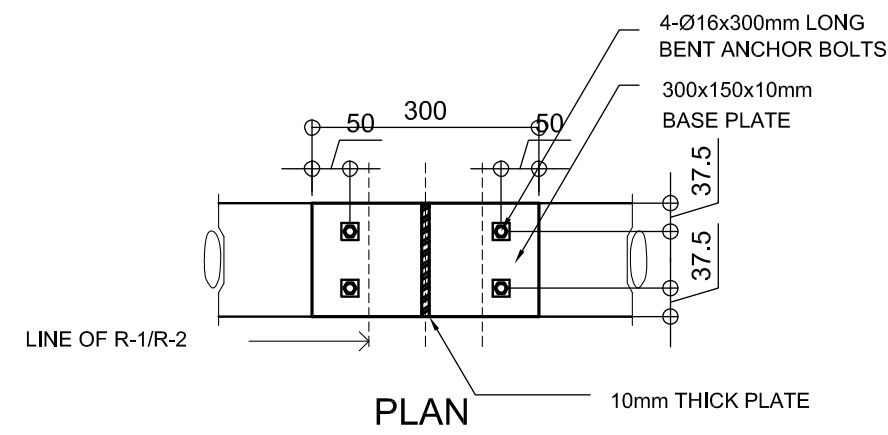
A
S-3
ELEV @ GRID 1&7
SCALE: 1:100 M



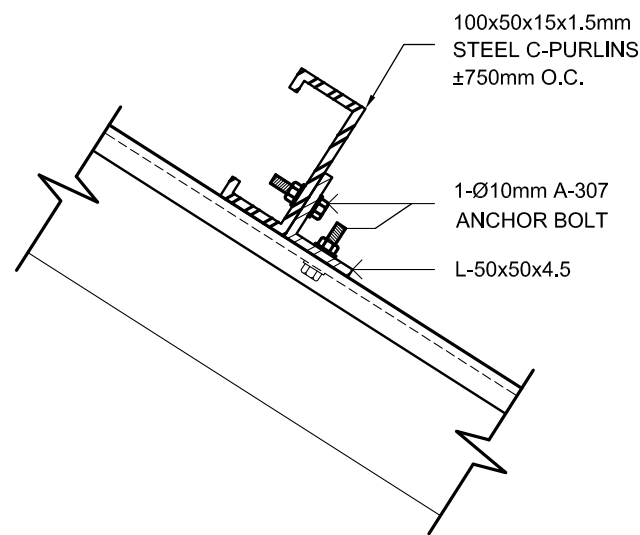
B
S-3
ELEV @ GRID 3 & 5
SCALE: 1:100 M



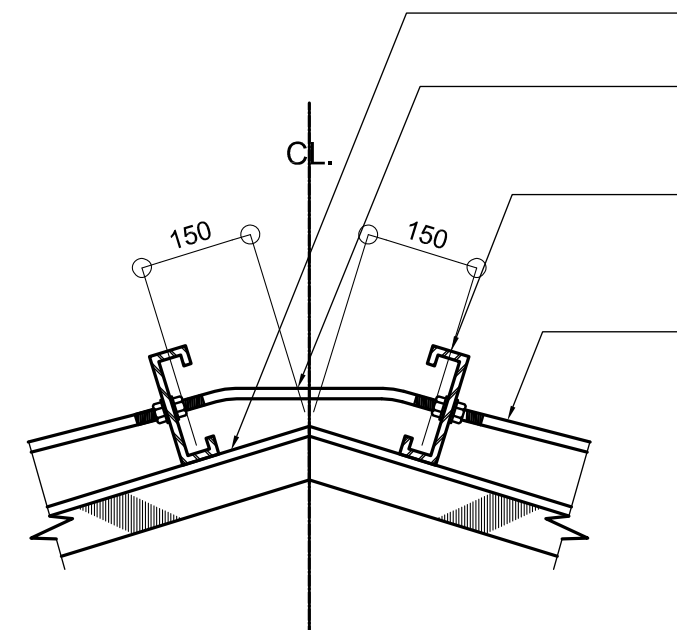
C
S-3
ELEV BET GRIDLINES
SCALE: 1:100 M



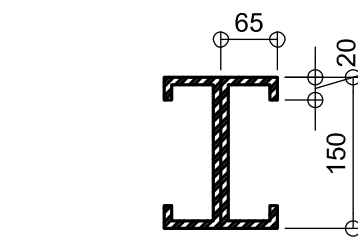
D
S-3
TYPICAL RAFTER ANCHORAGE DETAIL
SCALE 1:20 M



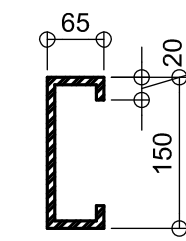
G
S-3
PURLIN CONNECTION DET
SCALE 1:5 M



H
S-3
TIE ROD CONNECTION DET.
SCALE 1:10 M

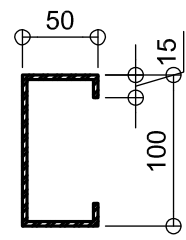


2LC-150x65x20x3
R-1



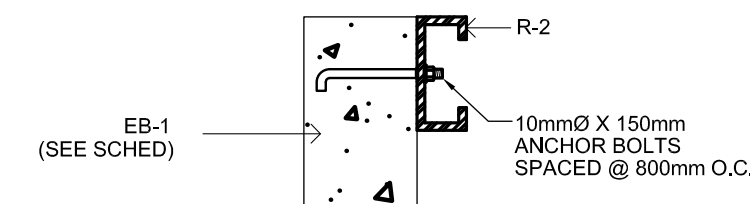
LC-150x65x20x3
R-2

E
S-3
DETAIL OF RAFTER
SCALE NTS

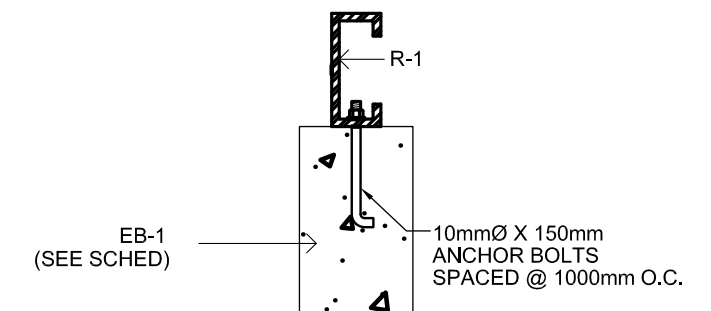


LC-100x50x15x1.5

F
S-3
DETAIL OF PURLINS
SCALE NTS



1
S-2
SECTION DETAIL
SCALE NTS

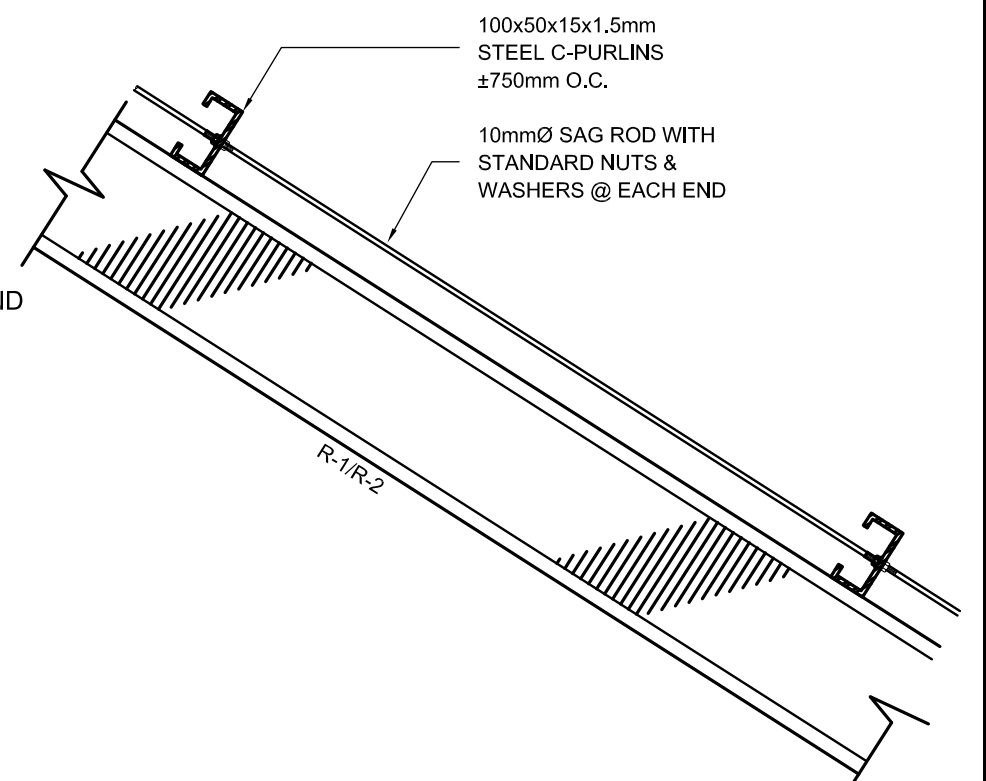


2
S-2
SECTION DETAIL
SCALE NTS






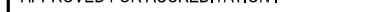

TOP OF RAFTER
10mmØ TIE ROD WITH
STANDARD NUTS &
WASHERS @ EACH END

50x100x15x1.5mm
STEEL C-PURLINS
750mm O.C.

10mmØ SAG ROD



I
S-3
SAG ROD CONNECTION DET.
SCALE 1:10 M

<div><div>REPUBLIC OF THE PHILIPPINES DEPARTMENT OF EDUCATION (DepED) TASK FORCE ENGINEERING, ASSESSMENT AND MONITORING MERALCO AVENUE, PASIG CITY</div></div>	CONSULTANT / DESIGNER		REVIEWED BY:	RECOMMENDING APPROVAL:	APPROVED FOR ACCREDITATION:	CONCURRED:	PROJECT TITLE:	PROJECT NO: 01-002	OWNER:	SHEET NO:
	<div> ALBERT Z. DE BELEN</div>		<div> SOFIA T. SANTOSO</div>	<div> SOFIA T. SANTOSO</div>	<div> GILBERT S. REYES</div>	<div> RAMON C. BACANI</div>	ONE STOREY THREE CLASSROOM 7x9m (STANDARD)	DESIGNED BY: AZB	DEPARTMENT OF EDUCATION DepED	<div>S-3 3</div>
	ARCHITECT IV PRC NO.: 0010990 TIN: 149 460 161 PTR NO.: DATE: 27 OCT. 2002		CHIEF ARCHITECT, DIVISION BUREAU OF DESIGN, DPWH	OIC, DIRECTOR III BUREAU OF DESIGN, DPWH	OIC, DIRECTOR IV BUREAU OF DESIGN, DPWH	UNDERSECRETARY DEPARTMENT OF EDUCATION (DepED)	LOCATION:	ENCODED BY: Max C	SHEET CONTENTS:	
								CHECKED BY:	ELEVATIONS TYPICAL CONNECTION DETAIL	
								DATE: 01 03		

NOTE: THIS DRAWING, AS AN INSTRUMENT OF SERVICE IS THE PROPERTY OF TASK FORCE ENGINEERING, ASSESSMENT AND MONITORING AND AS SUCH MUST NOT BE REPRODUCED OR COPIED IN PART OR IN WHOLE WITHOUT THEIR PERMISSION. ALL DRAWINGS ARE TO BE RETURNED WHEN NO LONGER IN USE.

GENERAL NOTES

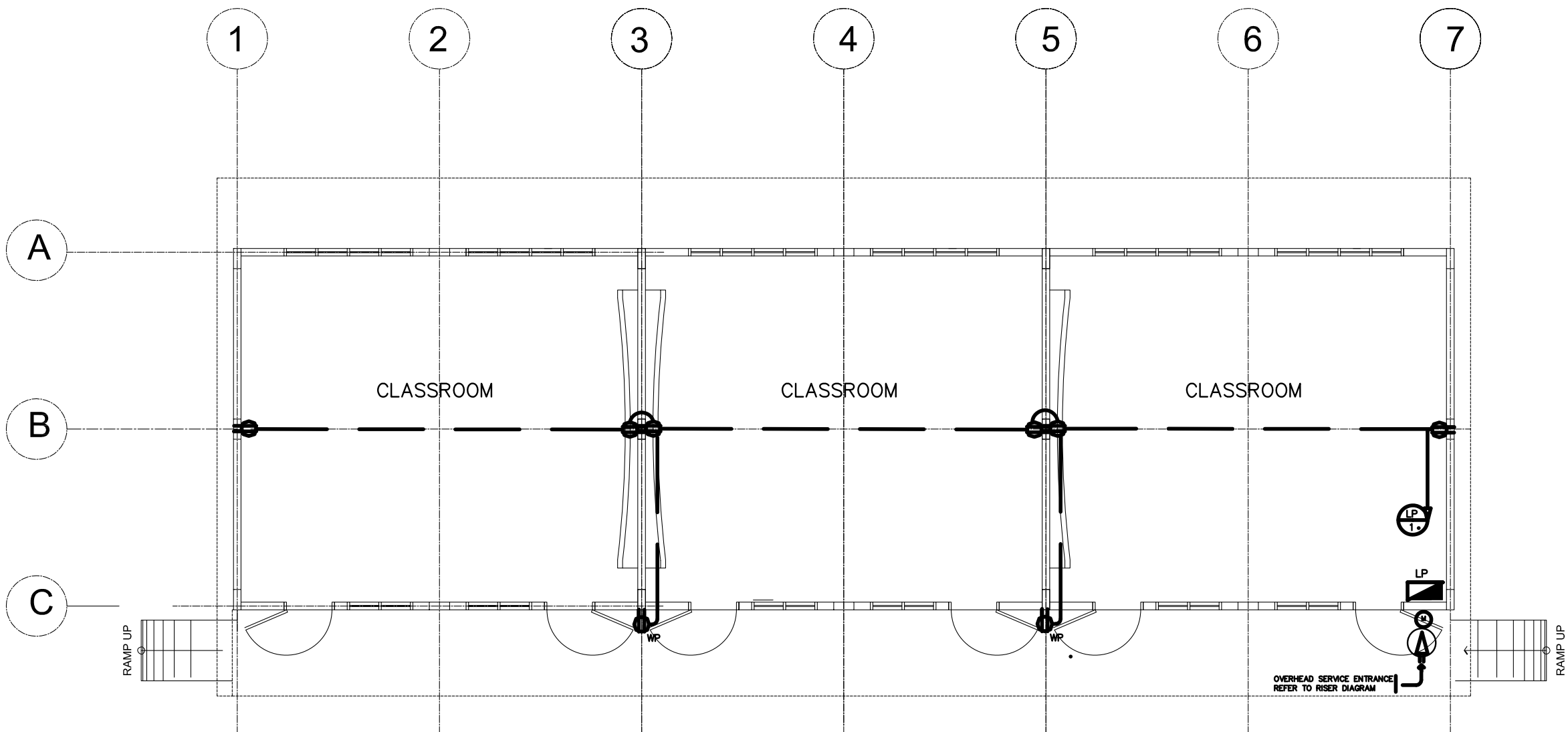
1. ALL ELECTRICAL WORKS SHALL COMPLY IN ACCORDANCE WITH THESE PLANS AND SPECIFICATIONS. THE APPLICABLE PROVISIONS OF THE LATEST EDITION OF THE PHILIPPINE ELECTRICAL CODE (PEC). THE RULES AND REGULATION OF THE LOCAL ENFORCING AUTHORITY AND THE REQUIREMENTS OF THE LOCAL POWER COMPANY. THE ELECTRICAL WORKS SHALL BE UNDER IMMEDIATE SUPERVISION OF A DULY REGISTERED ELECTRICAL ENGINEER.
2. THE ELECTRICAL SERVICE POWER IS 1-PHASE, 2-WIRE, 230 V AC, 60 Hz.
3. WIRING METHOD SHALL BE AS FOLLOWS :

a. FEEDERS AND RISERS- INTERMEDIATE METALLIC CONDUITb. LIGHTING, POWER RECEPTACLE BRANCH CKT., & AUXILIARY- POLYVINYL CHLORIDE CONDUIT SCH. 40
4. ALL WIRES SHALL BE COPPER AND THERMOPLASTIC INSULATED TYPE "THW" UNLESS OTHERWISE INDICATED IN THE PLAN. THE MINIMUM SIZE OF WIRE FOR POWER AND LIGHTING CIRCUIT HOMERUN SHALL BE 3.5mm² AND INSULATED FOR 600 VOLTS. SMALLEST RACEWAY SHALL BE 15mmØ TRADE/NOMINAL SIZE.
5. ALL OUTLET BOXES SHALL BE GALVANIZED GAGE NO. 16 DEEP TYPE WITH FACTORY KNOCKOUTS.
6. ALL MATERIALS TO BE USED SHALL BE BRAND NEW AND APPROVED TYPE FOR THE PARTICULAR LOCATION AND PURPOSE OF USAGE.
7. GROUNDING SYSTEM SHALL BE PROVIDED TO ALL LIGHTING AND POWER CIRCUIT AS PER PHILIPPINE ELECTRICAL CODE REQUIREMENT.
8. MOUNTING HEIGHT OF WIRING DEVICES SHALL BE AS FOLLOWS :

a. LIGHT SWITCH- 1.20 M ABOVE FINISH FLOORb. CONVENIENCE OUTLET- 0.30 M ABOVE FINISH FLOOR.c. PANELBOARD- 1.80 M ABOVE FINISH FLOOR

LEGEND

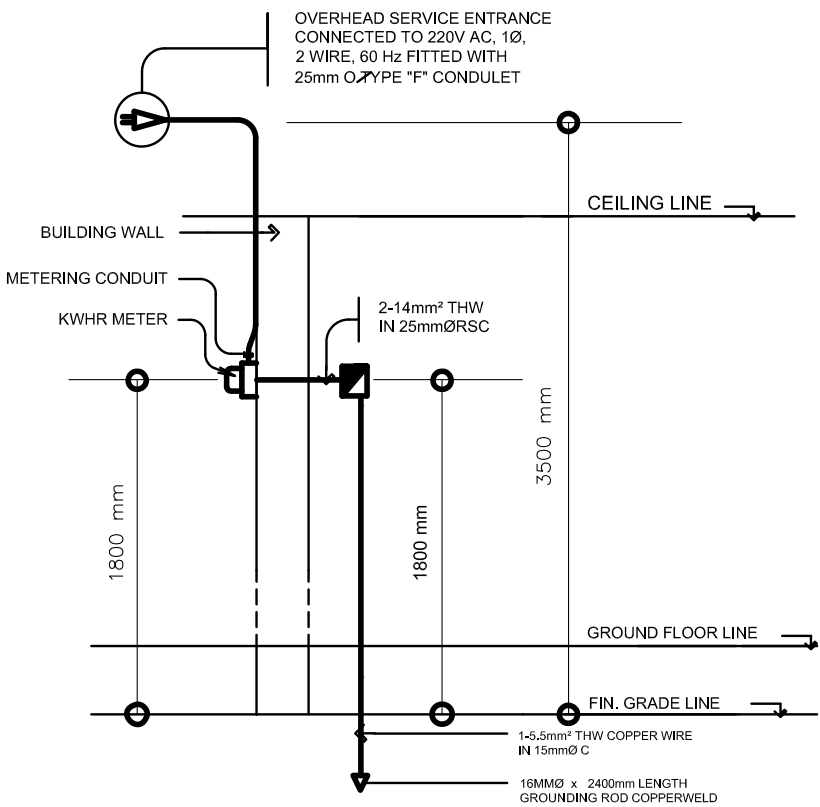
SYMBOL	DESCRIPTION
	- CEILING LIGHT OUTLET
	- 2 x 40 WATTS FLUORESCENT LAMP
	- CEILING FAN OUTLET
S/Sa	- ONE GANG DEVICE SWITCH
Sab	- TWO GANG DEVICE SWITCH
Scde	- THREE GANG DEVICE SWITCH
SW	- THREE WAY DEVICE SWITCH
Sf	- FAN CONTROL SWITCH
	- RACEWAY CONDUIT CONCEALED IN CEILING
	- RACEWAY CONDUIT CONCEALED UNDER FLOOR
	- PANELBOARD
	- DUPLEX CONVENIENCE OUTLET, GROUNDING TYPE 10 AMPS, 250 VOLT WITH MODERN PLATE COVER
	- WEATHERPROOF TYPE DUPLEX CONVENIENCE OUTLET, GROUNDING TYPE 10 AMPS, 250 VOLT WITH MODERN PLATE COVER
	- HOMERUN DIRECT TO PANELBOARD
	- CIRCUIT BREAKER, RATING AS INDICATED
	- ELECTRIC SERVICE METER
	- SERVICE ENTRANCE



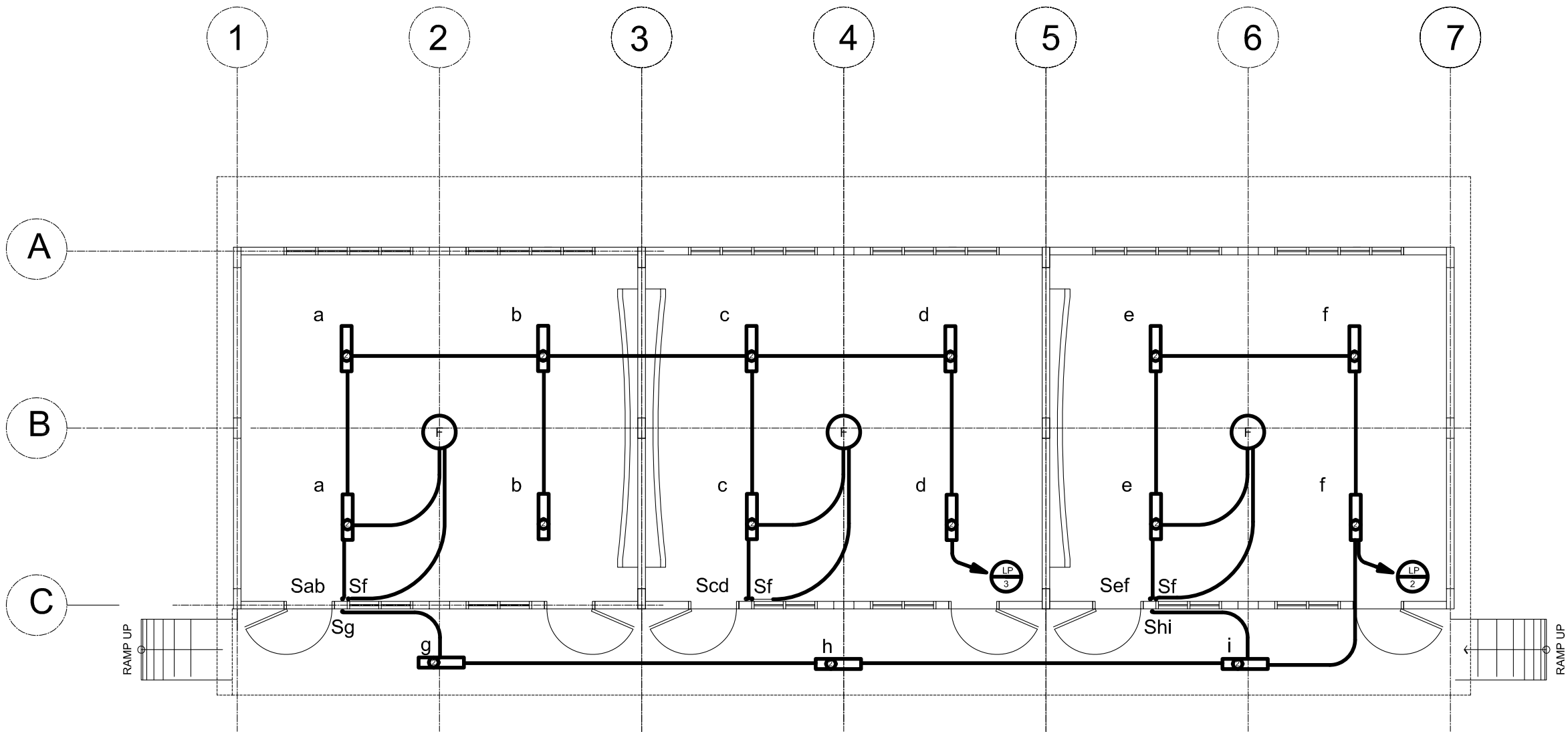
POWER LAYOUT
SCALE 1:100 M

LOAD SCHEDULE

PANELBOARD: LP			MAIN : 60AT, 100AF, 2P, 230V				
CKT. NO.	DESCRIPTION	VA LOAD	CIRCUIT BREAKER				WIRE & CONDUIT SIZE
			VOLT	POLE	AT	AF	
1	CONV. OUTLET - 8 x 180W	1440	230	2	20	50	3-3.5mm² THW IN 15mmØ C
2	LIGHTING OUTLET - 8 x 100W	800	230	2	20	50	3-3.5mm² THW IN 15mmØ C
3	LIGHTING OUTLET - 10 x 100W	1000	230	2	20	50	3-3.5mm² THW IN 15mmØ C
4	SPARE	1500	230	2	20	50	_____
TOTAL		4740					
IL = $\frac{4740}{230\text{ V}}$ = 20.6 A			FEEDER: 2-14mm² THW IN 25mmØ C PROTECTION: 60 AT, 100 AF, 2P, 230 V				



ELECTRICAL RISER DIAGRAM
NOT TO SCALE



LIGHTING LAYOUT
SCALE 1:100 M