



1  
A-1

PERSPECTIVE VIEW

SCALE: NTS

## TABLE OF CONTENTS

REPUBLIC OF THE PHILIPPINES  
OFFICE OF THE CITY/MUNICIPAL  
ENGINEER/BUILDING OFFICIAL

DISTRICT/CITY/MUNICIPALITY

### ARCHITECTURAL

- A-1 PERSPECTIVE VIEW, TABLE OF CONTENTS
- A-2 FLOOR, REFLECTED CEILING, ROOF PLAN, ELEVATIONS, AND SECTIONS
- A-3 SCHEDULE OF DOOR & WINDOWS, BAY SECTION, DETAIL SECTION, LOUVER BLOCK VENT., RAMP DETAIL
- A-4 CABINET, COUNTER & TOILET DETAILS

### LAND USE & ZONING

### LINE & GRADE

### ARCHITECTURAL

### STRUCTURAL

- S-1 FOUNDATION PLAN, ROOF FRAMING PLAN FOOTING DETAIL, COLUMN DETAIL, WF-1, RAMP DETAIL
- S-2 ELEVATIONS TYPICAL CONNECTION DETAIL

### STRUCTURAL

### SANITARY

### ELECTRICAL

- E-1 ELECTRICAL LAYOUT PLAN, RISER DIAGRAM, LOAD SCHEDULE, GEN. NOTES

### ELECTRICAL

### SANITARY

### MECHANICAL

PREPARED BY :

*Maximo M. Calbang*  
**MAXIMO M. CALBANG**  
PDO III  
PFSED-DepED

CHECKED BY :

*Nathaniel Q. Mendoza*  
**NATHANIEL Q. MENDOZA**  
ARCHITECT III  
PFSED-DepED

RECOMMENDING APPROVAL :

*Luis G. Purisima, Jr.*  
**LUIS G. PURISIMA, Jr.**  
HEAD, PLANNING & DESIGN UNIT  
PFSED-DepED

APPROVED BY :

*Oliver R. Hernandez*  
**OLIVER R. HERNANDEZ**  
CHIEF, PFSED-OPS  
DEPARTMENT OF EDUCATION

CONCURRED BY :

*Ramon C. Bacani*  
**RAMON C. BACANI**  
UNDERSECRETARY  
DEPARTMENT OF EDUCATION

PROJECT TITLE :

ONE STOREY  
SCIENCE LABORATORY  
BUILDING

LOCATION : .

PROJECT NO:

DESIGNED BY: NQM

ENCODED BY: MMC

CHECKED BY: LGP

DATE :

OWNER :

DEPARTMENT OF EDUCATION  
**DepED**

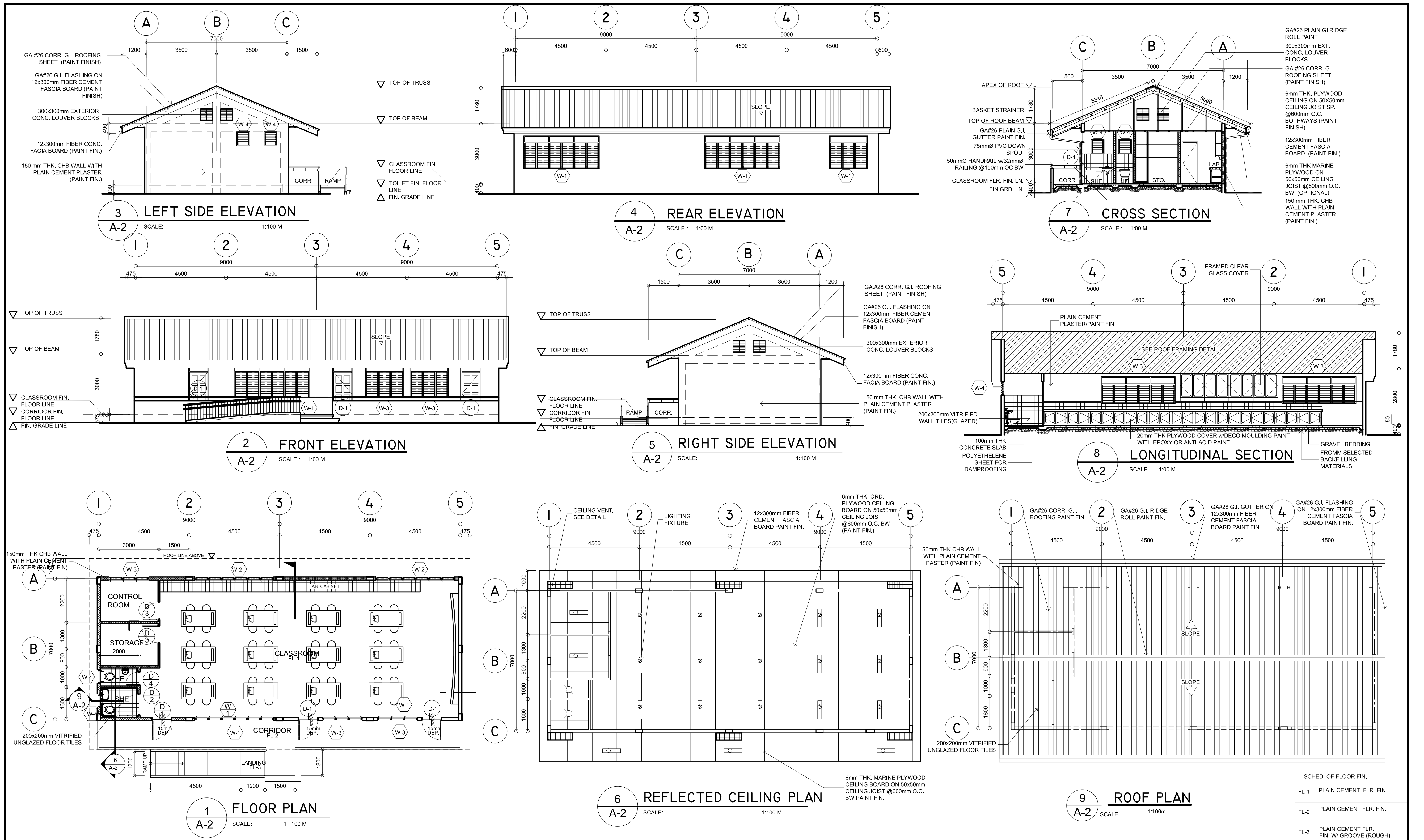
SHEET CONTENTS :

PERSPECTIVE VIEW, TABLE OF CONTENTS

SHEET NO:

A-I  
4





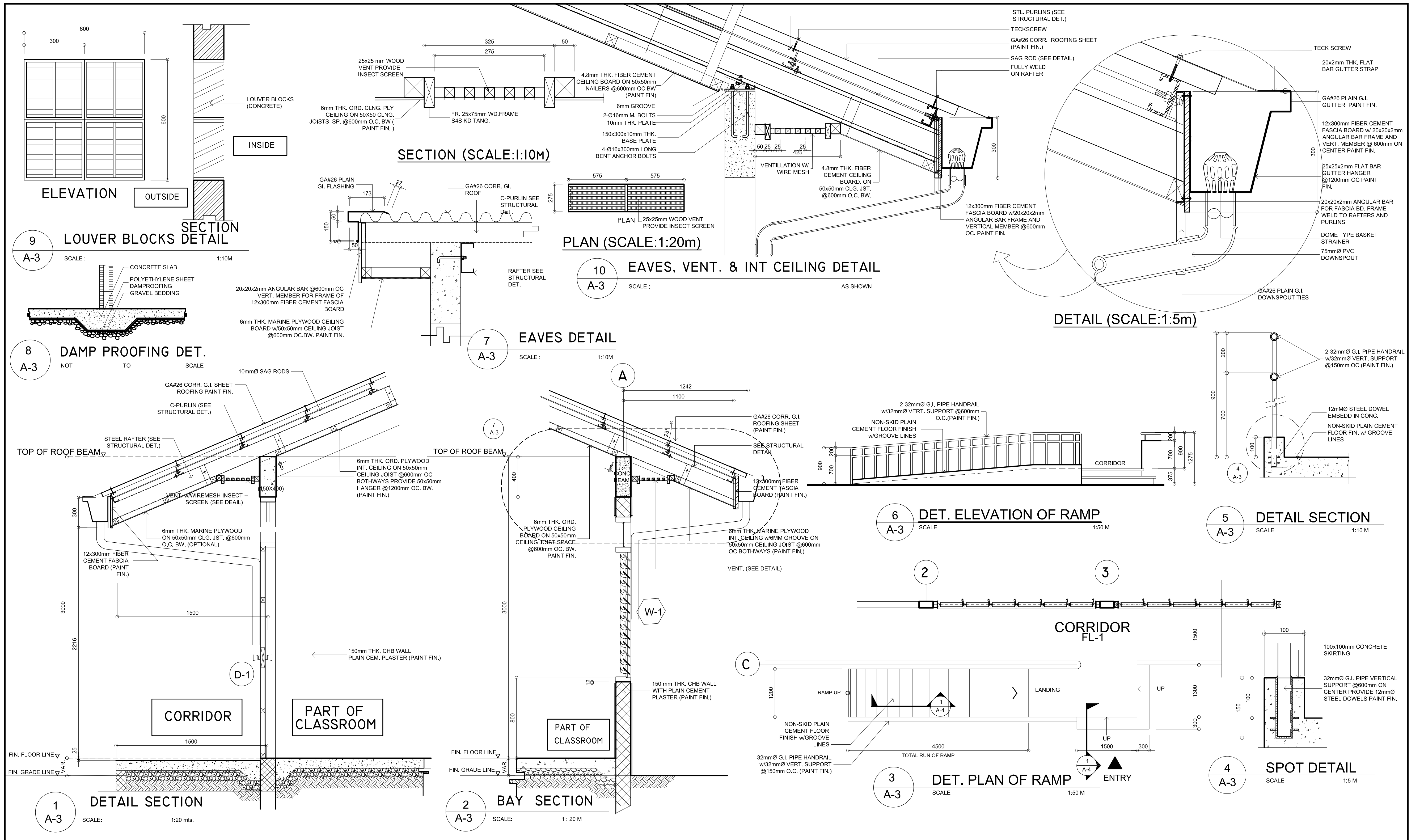
SCHED. OF FLOOR FIN.	
FL-1	PLAIN CEMENT FLR. FIN.
FL-2	PLAIN CEMENT FLR. FIN.
FL-3	PLAIN CEMENT FLR. FIN. W/ GROOVE (ROUGH)

<p>REPUBLIC OF THE PHILIPPINES</p> <p><b>DepED</b></p> <p>DEPARTMENT OF EDUCATION</p> <p>PHYSICAL FACILITIES AND SCHOOLS ENGINEERING DIVISION</p> <p>MERALCO AVENUE, PASIG CITY</p>		<p>PREPARED BY :</p> <p><i>Maximo M. Calbang</i></p> <p>MAXIMO M. CALBANG</p> <p>PDO III</p> <p>PFSED-DepED</p>	<p>CHECKED BY :</p> <p><i>Nathaniel Q. Mendoza</i></p> <p>NATHANIEL Q. MENDOZA</p> <p>ARCHITECT III</p> <p>PFSED-DepED</p>	<p>RECOMMENDING APPROVAL :</p> <p><i>Luis S. Purisima, Jr.</i></p> <p>LUIS S. PURISIMA, Jr.</p> <p>HEAD, PLANNING &amp; DESIGN UNIT</p> <p>PFSED-DepED</p>	<p>APPROVED BY :</p> <p><i>Oliver R. Hernandez</i></p> <p>OLIVER R. HERNANDEZ</p> <p>CHIEF, PFSED-OPS</p> <p>DEPARTMENT OF EDUCATION</p>	<p>CONCURRED BY :</p> <p><i>Ramon C. Bacani</i></p> <p>RAMON C. BACANI</p> <p>UNDERSECRETARY</p> <p>DEPARTMENT OF EDUCATION</p>	<p>PROJECT TITLE :</p> <p>ONE STOREY</p> <p>SCIENCE LABORATORY</p> <p>BUILDING</p> <p>LOCATION : .</p>	<p>PROJECT NO:</p> <p>DESIGNED BY: NOM</p> <p>ENCODED BY: MMC</p> <p>CHECKED BY: LOP</p> <p>DATE :</p>	<p>OWNER :</p> <p>DEPARTMENT OF EDUCATION</p> <p>DepED</p> <p>SHEET CONTENTS :</p> <p>GROUND FLOOR, REFLECTED CEILING PLAN,</p> <p>ROOF PLAN, ELEVATIONS AND SECTIONS</p>	<p>SHEET NO:</p> <p>A-2</p> <p>4</p>
---	--	---	--	--	--	---	--	--	---	--------------------------------------

NOTE: THIS DRAWING, AS AN INSTRUMENT OF SERVICE IS THE PROPERTY OF PHYSICAL FACILITIES AND SCHOOLS ENGINEERING DIVISION AND AS SUCH MUST NOT BE REPRODUCED OR COPIED IN PART OR IN WHOLE WITHOUT THEIR PERMISSION. ALL DRAWINGS ARE TO BE RETURNED WHEN NO LONGER IN USE.

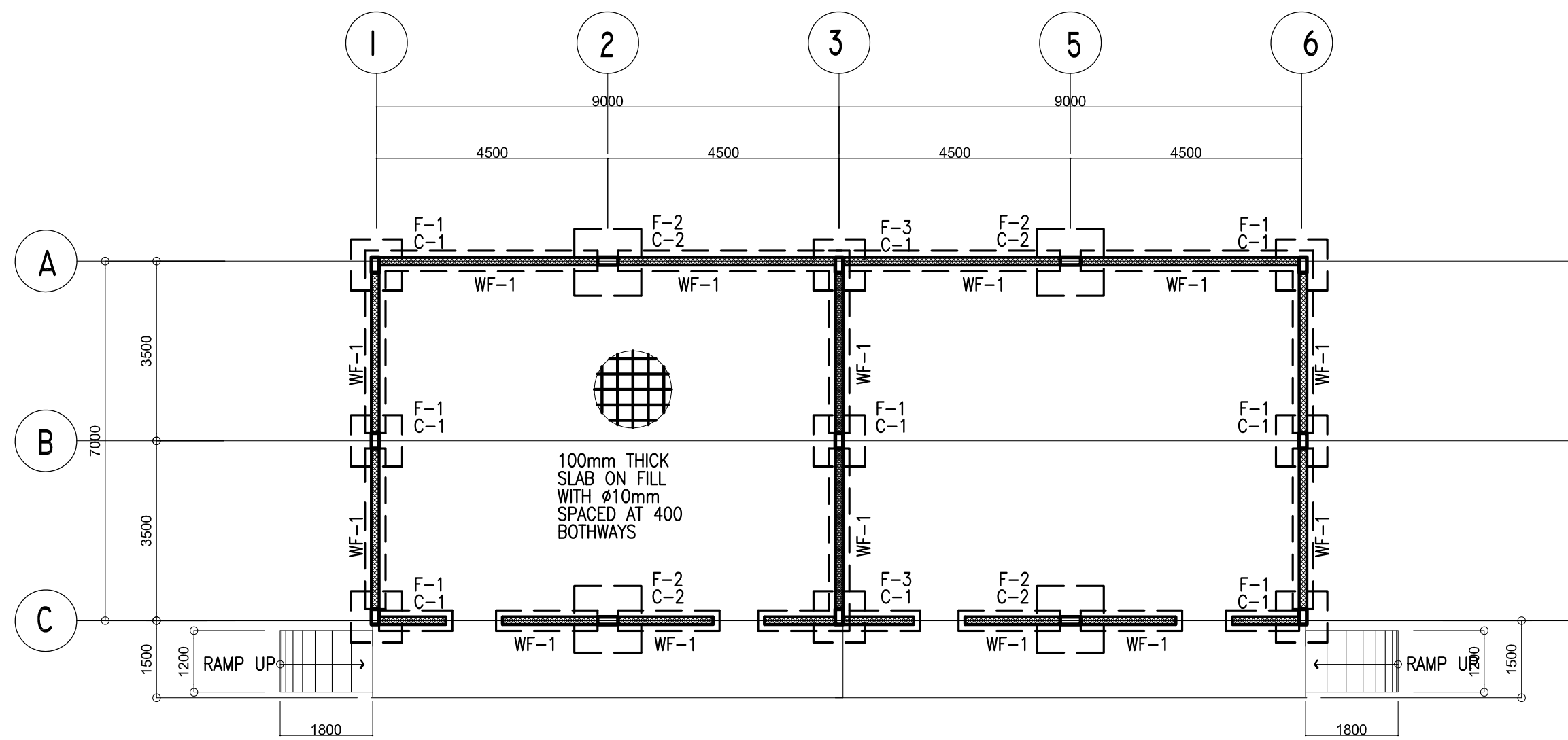
REP. ACT 545



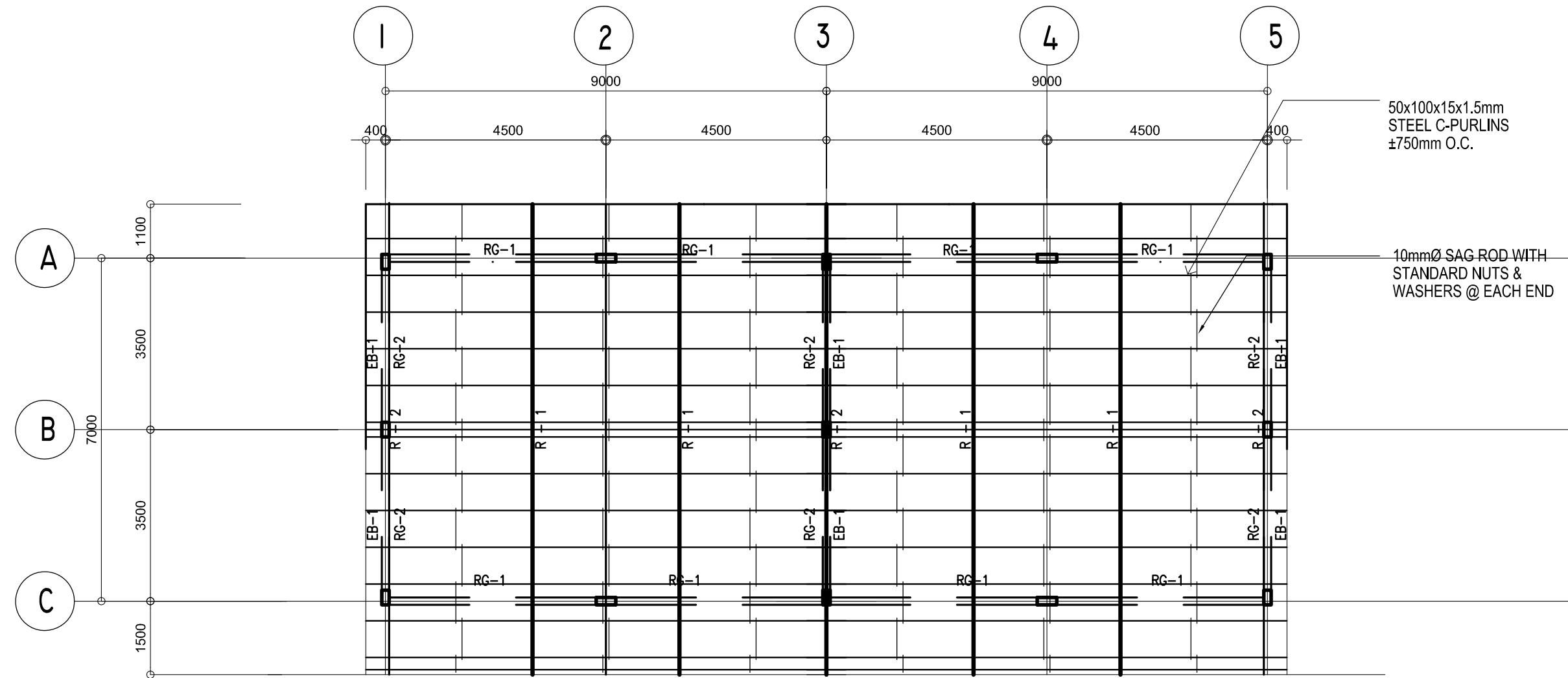




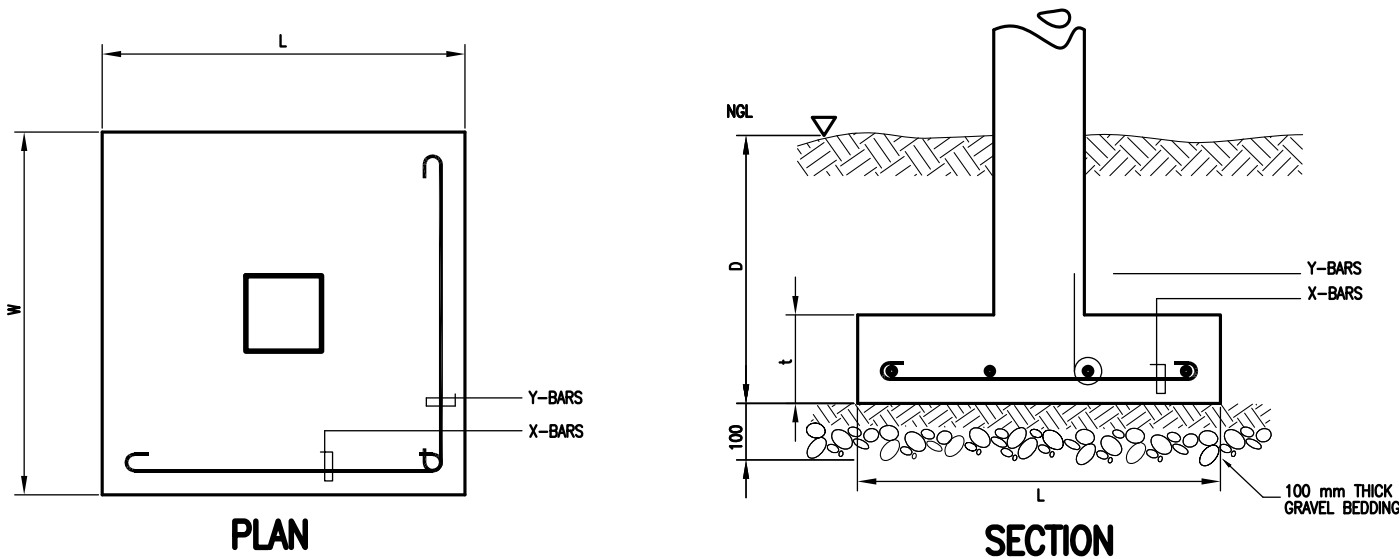




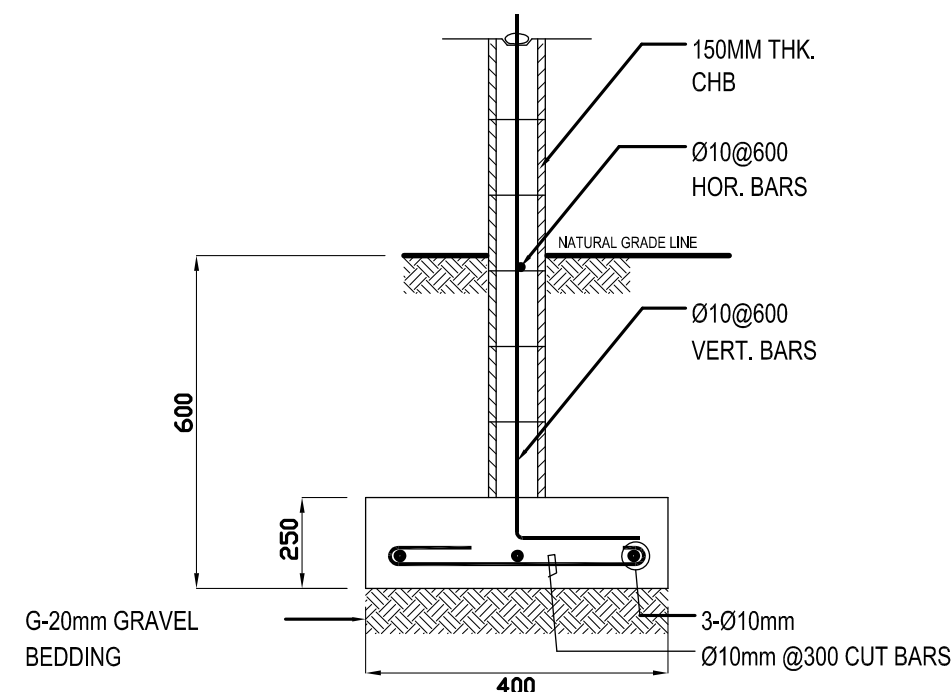
**A**  
S-1  
**FOUNDATION PLAN**  
SCALE 1:100 M.



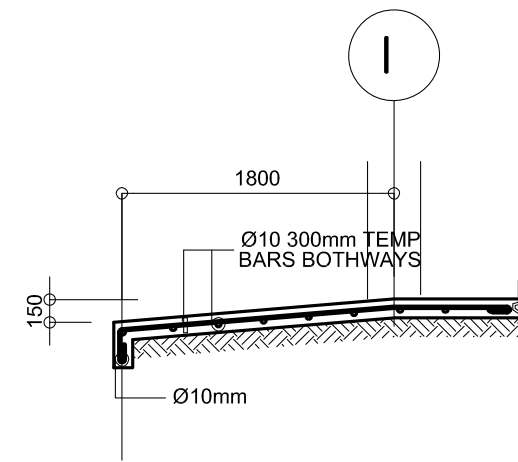
**B**  
S-1  
**ROOF FRAMING PLAN**  
SCALE 1:100 M.



**C**  
S-1  
**TYP. FOOTING DETAIL**  
SCALE: NTS



**D**  
S-1  
**DETAIL OF WF-1**  
SCALE: NTS.



**E**  
S-1  
**DETAIL OF RAMP**  
SCALE 1:50M

COLUMN SCHEDULE		
LEVEL	C-1	C-2
FOUNDATION LEVEL TO ROOF LEVEL	<p>MAIN BAR: 4-Ø16mm</p> <p>TIES : Ø10 mm 1Ø50, 8Ø75, REST Ø150mm TO CENTER</p>	<p>MAIN BAR: 6-Ø16mm</p> <p>TIES : Ø10 mm 1Ø50, 8Ø75, REST Ø150mm TO CENTER</p>

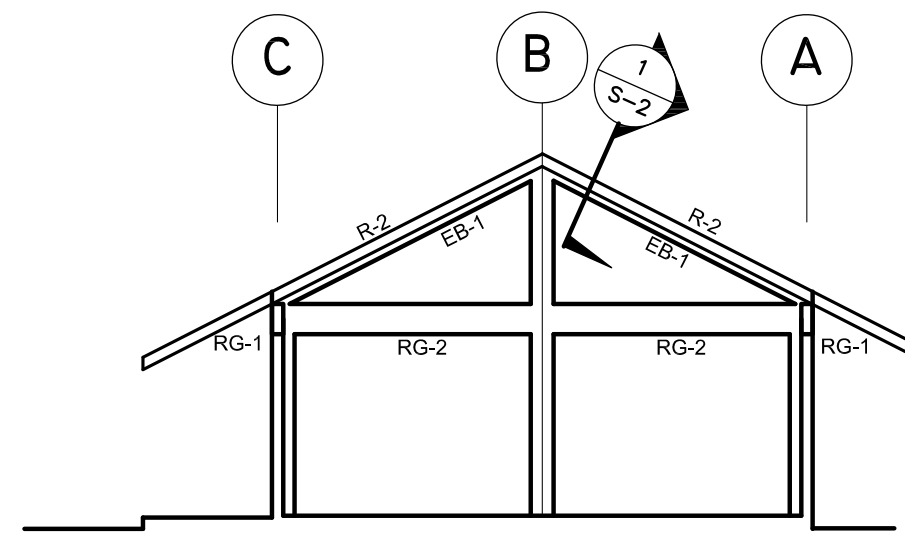
SCHEDULE OF FOOTINGS							
FOOTING MARK	FOOTING DIMENSIONS (mm)				REINFORCEMENT		REMARKS
	LENGTH (L)	WIDTH (W)	DEPTH (D)	THICKNESS (t)	BAR X	BAR Y	
F-1	800	800	1200	250	4 – 16mmØ	4 – 16mmØ	SQUARE FOOTING
F-2	1000	1000	1200	250	4 – 16mmØ	4 – 16mmØ	SQUARE FOOTING
F-2	900	900	1200	250	4 – 16mmØ	4 – 16mmØ	SQUARE FOOTING

**DESIGN CRITERIA :**

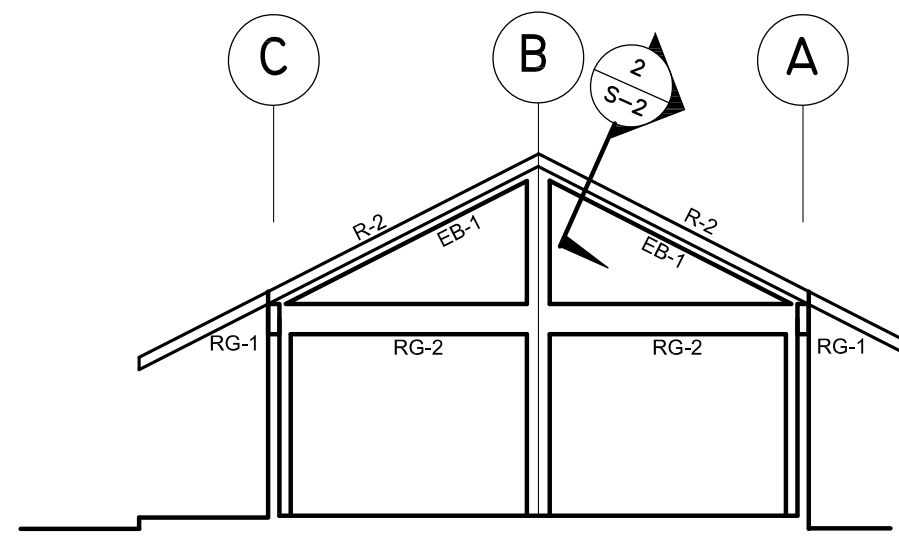
- A. CONCRETE**  
 $f_c' = 20.685 \text{ Mpa ( 3,000 Psi )}$ , minimum compressive strength of concrete a 28 days unless otherwise specified.
- B. REBAR**  
 $f_y = 275.8 \text{ Mpa ( 40,000 Psi )}$ , minimum yield strength of reinforcing bars unless otherwise specified.
- C. STRUCTURAL STEEL**  
 $F_y = 248 \text{ Mpa ( 36 Ksi )}$ , specified minimum yield strength unless otherwise specified.
- D. FOUNDATION**  
 $SBP = 95.706 \text{ Kpa ( 2,000 Psf )}$ , was used in the design for all footings. No footing shall rest on fill.

<p>REPUBLIC OF THE PHILIPPINES <b>DepED</b> DEPARTMENT OF EDUCATION PHYSICAL FACILITIES AND SCHOOLS ENGINEERING DIVISION MERALCO AVENUE, PASIG CITY</p>	PREPARED BY :  <b>MAXIMO M. CALBANG</b> PDD III PFSED-DepED	CHECKED BY :  <b>JOHN CARLO L. TOLIBAS</b> ENGINEER III PFSED-DepED	RECOMMENDING APPROVAL :  <b>LUIS G. PURISIMA, Jr.</b> HEAD, PLANNING & DESIGN UNIT PFSED-DepED	APPROVED BY :  <b>OLIVER R. HERNANDEZ</b> CHIEF, PFSED-OPS DEPARTMENT OF EDUCATION	CONCURRED BY :  <b>RAMON C. BACANI</b> UNDERSECRETARY DEPARTMENT OF EDUCATION	PROJECT TITLE : <b>MULTI-PURPOSE WORKSHOP BUILDING</b> LOCATION : .	PROJECT NO: DESIGNED BY: NQM ENCODED BY: MMC CHECKED BY: LGP DATE :	OWNER : <b>DEPARTMENT OF EDUCATION DepED</b> SHEET CONTENTS : FOUNDATION PLAN, ROOF FRAMING PLAN FOOTING DETAIL, COLUMN DETAIL, WF-1, RAMP DET.	SHEET NO: <b>S-I 2</b>
	<p>NOTE: THIS DRAWING, AS AN INSTRUMENT OF SERVICE IS THE PROPERTY OF PHYSICAL FACILITIES AND SCHOOLS ENGINEERING DIVISION AND AS SUCH MUST NOT BE REPRODUCED OR COPIED IN PART OR IN WHOLE WITHOUT THEIR PERMISSION. ALL DRAWINGS ARE TO BE RETURNED WHEN NO LONGER IN USE.</p> <p>REP. ACT 545</p>								

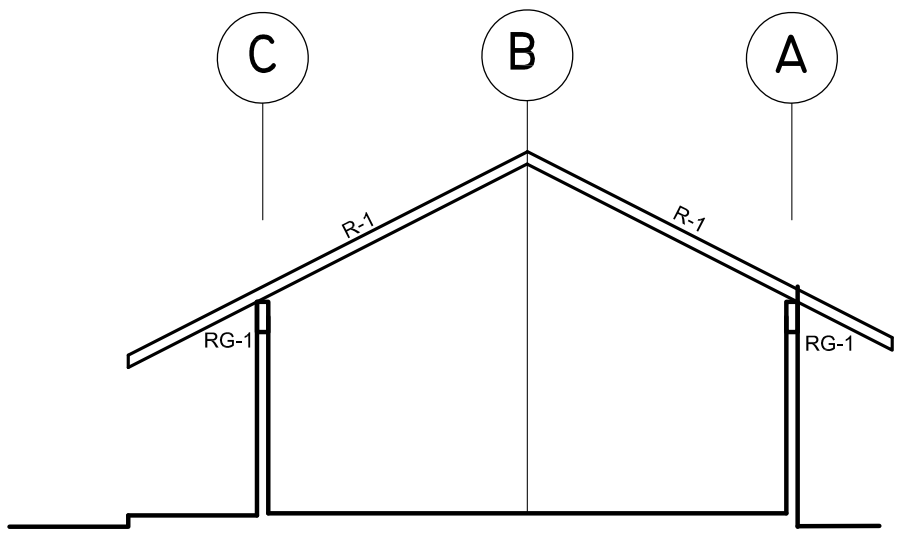




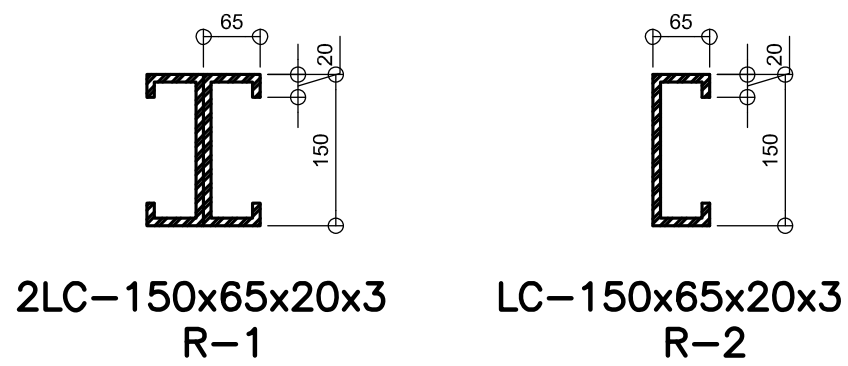
**A**  
S-2  
**ELEV @ GRID 1 & 5**  
SCALE: 1:100 M



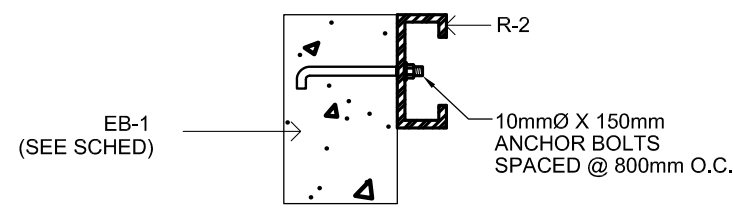
**B**  
S-2  
**ELEV @ GRID 3**  
SCALE: 1:100 M



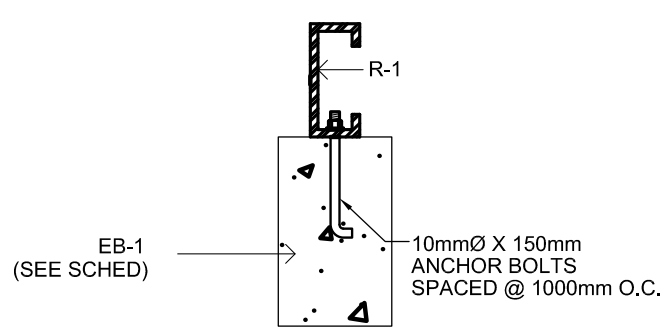
**C**  
S-2  
**ELEV BET GRIDLINES**  
SCALE: 1:100 M



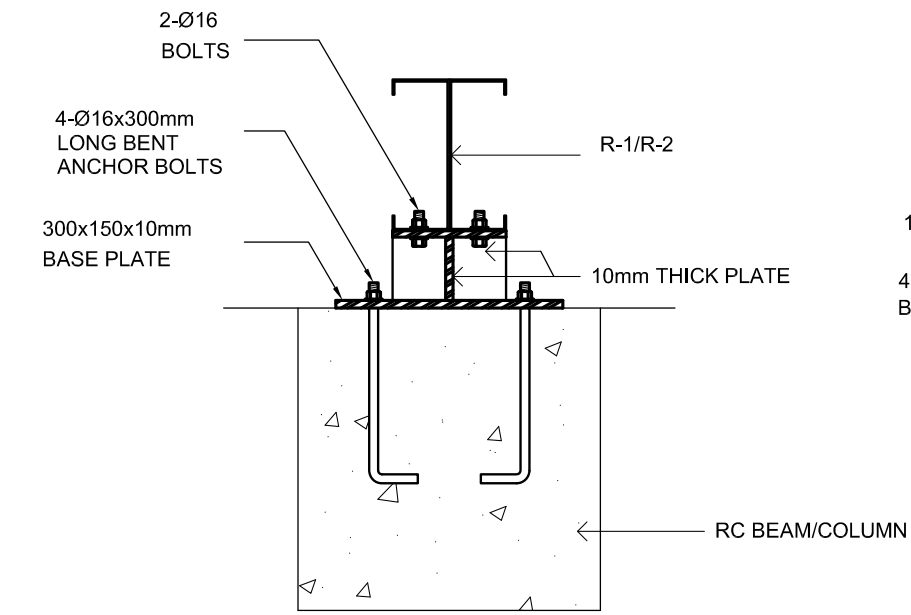
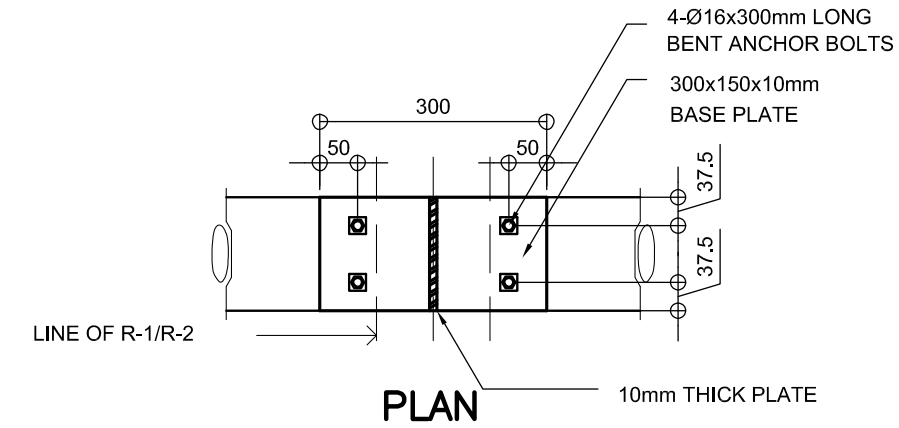
**E**  
S-2  
**DETAIL OF RAFTER**  
SCALE: NTS



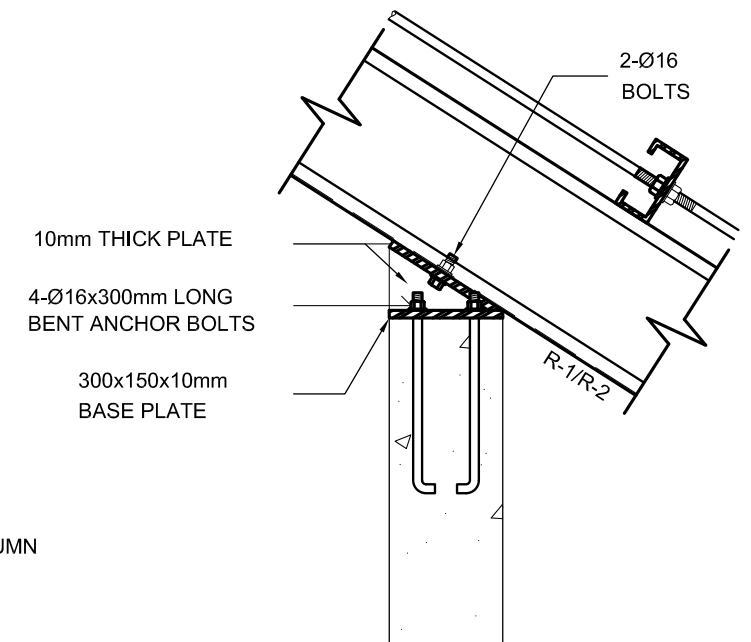
**1**  
S-2  
**SECTION DETAIL**  
SCALE: NTS



**2**  
S-2  
**SECTION DETAIL**  
SCALE: NTS

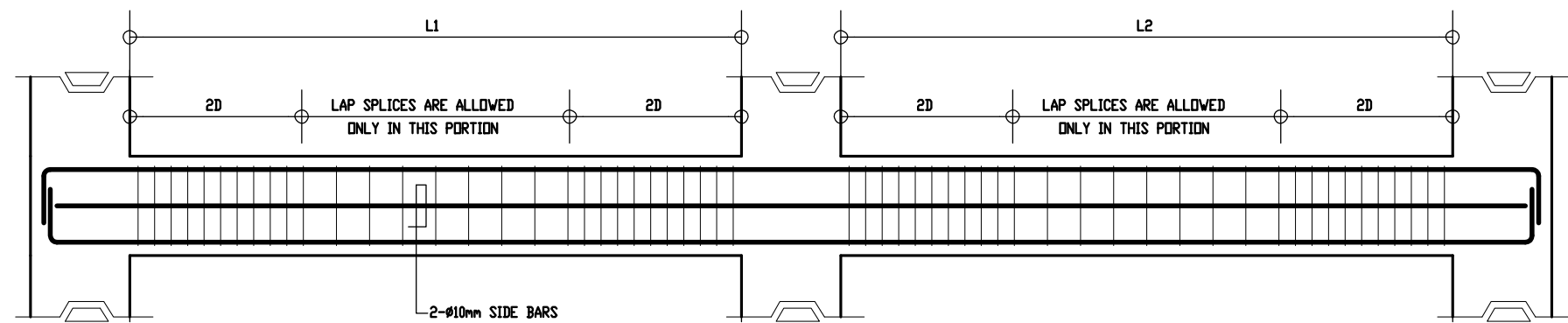


**ELEVATION**

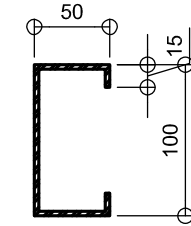


**ELEVATION**

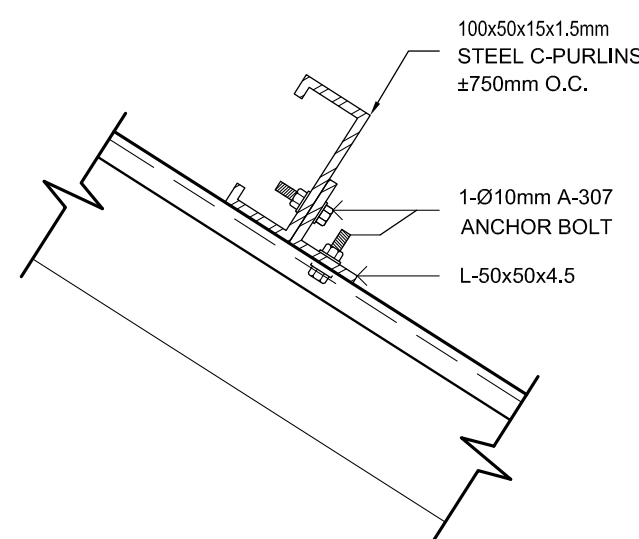
**G**  
S-2  
**TYPICAL RAFTER ANCHORAGE DETAIL**  
SCALE: 1:20 M



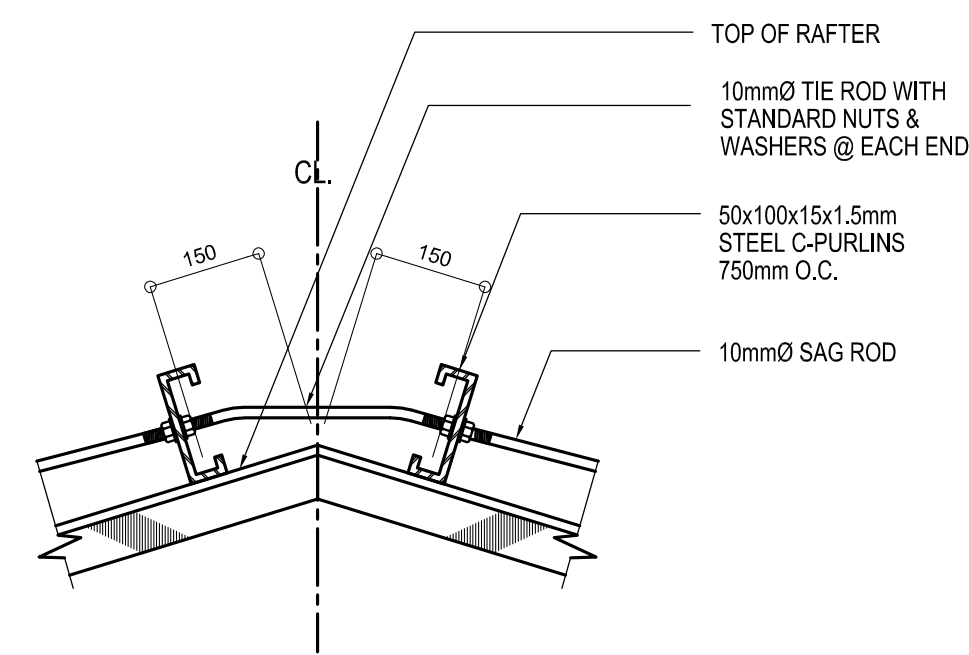
**D**  
S-2  
**TYPICAL BEAM ELEVATION**



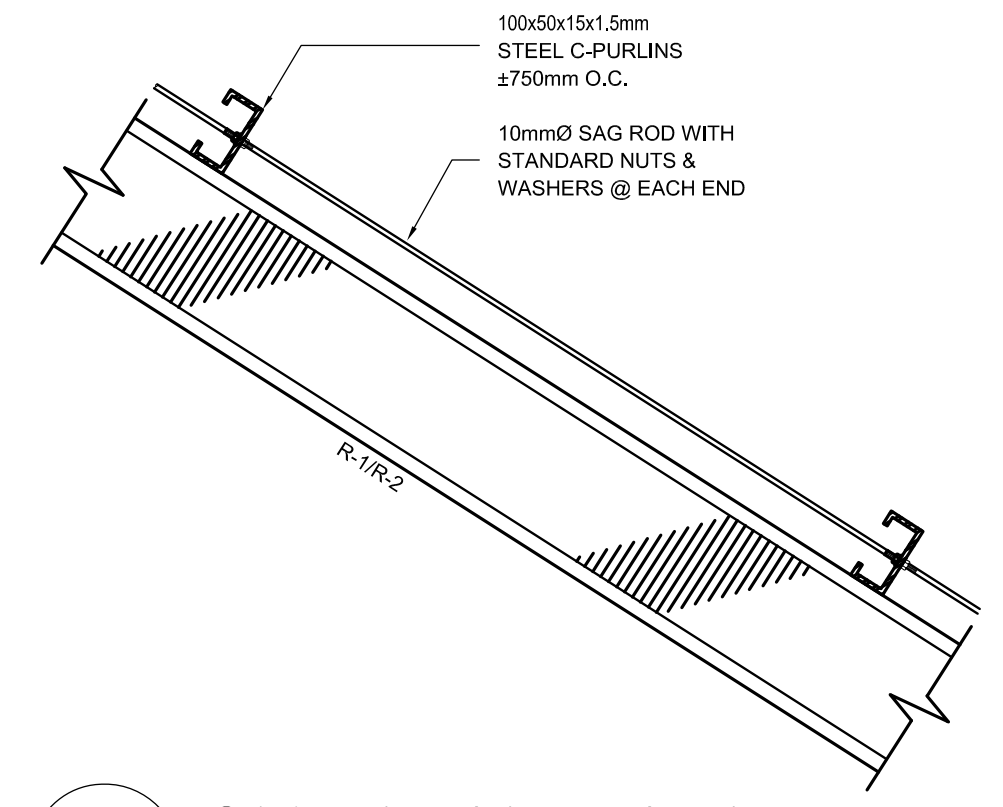
**F**  
S-2  
**DETAIL OF PURLINS**  
SCALE: NTS



**H**  
S-2  
**PURLIN CONNECTION DET**  
SCALE: 1:5 M


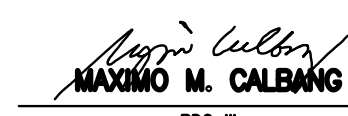

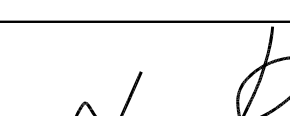
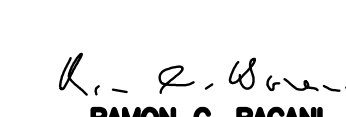


**I**  
S-2  
**TIE ROD CONNECTION DET.**  
SCALE: 1:10 M



**J**  
S-2  
**SAG ROD CONNECTION DET.**  
SCALE: 1:10 M

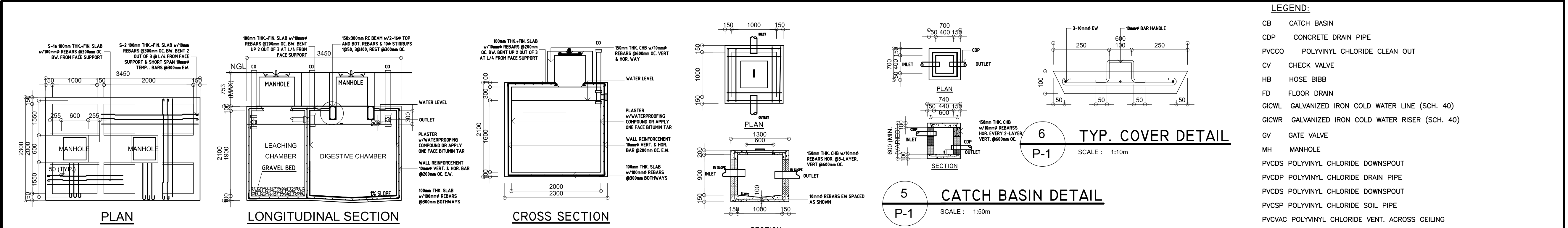
B E A M   S C H E D U L E											
FLOOR LEVEL	BEAM MARK	BEAM DIMENSIONS ( in / mm )		S T E E L   R E I N F O R C E M E N T S						S T I R R U P S Ø10mm (UNLESS NOTED OTHERWISE)	
				REBAR (mm Ø)	LEFT		MID SPAN		RIGHT		
		b	h		TOP	BOTTOM	TOP	BOTTOM	TOP		BOTTOM
R O O F   L E V E L	RG-1	150	400	Ø12mm	2	2	2	2	2	2	1@50, 8@100, REST@200
	RG-2	150	400	Ø12mm	2	2	2	2	2	2	1@50, 6@100, REST@200
											1@50, 6@100, REST@200
	EB-1	150	250	Ø10mm	2	2	2	2	2	2	1@50, REST@200

 <b>REPUBLIC OF THE PHILIPPINES</b> <b>DepED</b> DEPARTMENT OF EDUCATION PHYSICAL FACILITIES AND SCHOOLS ENGINEERING DIVISION MERALCO AVENUE, PASIG CITY	PREPARED BY :  <b>MAXIMO M. CALBANG</b> PDD III PFSED-DepED	CHECKED BY : <b>JOHN CARLO L. TOLIBAS</b> ENGINEER III PFSED-DepED	RECOMMENDING APPROVAL :  <b>LUIS G. PURISIMA, Jr.</b> HEAD, PLANNING & DESIGN UNIT PFSED-DepED	APPROVED BY :  <b>OLIVER R. HERNANDEZ</b> CHIEF, PFSED-OPS DEPARTMENT OF EDUCATION	CONCURRED BY :  <b>RAMON C. BACANI</b> UNDERSECRETARY DEPARTMENT OF EDUCATION	PROJECT TITLE : <b>MULTI-PURPOSE WORKSHOP BUILDING</b> LOCATION : .	PROJECT NO: DESIGNED BY: NDM ENCODED BY: MMC CHECKED BY: LOP DATE :	OWNER : <b>DEPARTMENT OF EDUCATION</b> DepED SHEET CONTENTS : <b>ELEVATIONS, BEAM DETAIL &amp; SCHED.</b> <b>TYPICAL CONNECTION DETAIL</b>	SHEET NO: <b>S-2</b> <b>2</b>
---	--	---	---	---	--	---	---	---	-------------------------------------

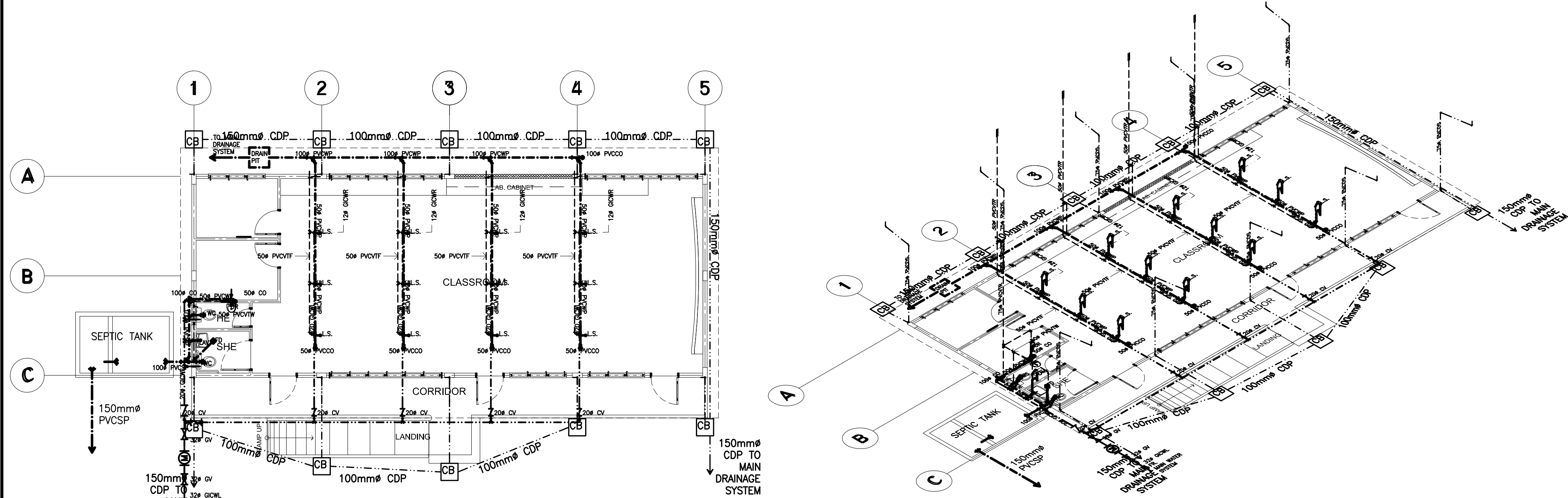
NOTE: THIS DRAWING, AS AN INSTRUMENT OF SERVICE IS THE PROPERTY OF PHYSICAL FACILITIES AND SCHOOLS ENGINEERING DIVISION AND AS SUCH MUST NOT BE REPRODUCED OR COPIED IN PART OR IN WHOLE WITHOUT THEIR PERMISSION. ALL DRAWINGS ARE TO BE RETURNED WHEN NO LONGER IN USE.

REP. ACT 545





- LEGEND:**
- CB CATCH BASIN
  - CDP CONCRETE DRAIN PIPE
  - PVCCO POLYVINYL CHLORIDE CLEAN OUT
  - CV CHECK VALVE
  - HB HOSE BIBB
  - FD FLOOR DRAIN
  - GICWL GALVANIZED IRON COLD WATER LINE (SCH. 40)
  - GICWR GALVANIZED IRON COLD WATER RISER (SCH. 40)
  - GV GATE VALVE
  - MH MANHOLE
  - PVCDs POLYVINYL CHLORIDE DOWNSPOUT
  - PVCDP POLYVINYL CHLORIDE DRAIN PIPE
  - PVCDs POLYVINYL CHLORIDE DOWNSPOUT
  - PVCSP POLYVINYL CHLORIDE SOIL PIPE
  - PVCVAC POLYVINYL CHLORIDE VENT. ACROSS CEILING
  - PVCVP POLYVINYL CHLORIDE VENT. PIPE
  - PVCVS POLYVINYL CHLORIDE VENT STACK
  - PVCVTR/W/F POLYVINYL CHLORIDE VENT TROUGH FLOOR/ROOF/WALL
  - PVCWP POLYVINYL CHLORIDE WASTE PIPE
  - PVCWS POLYVINYL CHLORIDE WASTE STACK
  - RD ROOF DRAIN
  - UD URINAL DRAIN
  - WC WATER CLOSET
  - LAV LAVATORY
  - CS COUNTER SINK



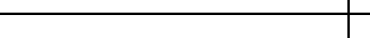
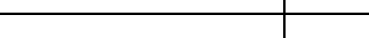
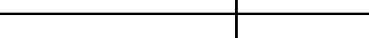
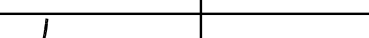
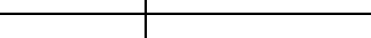


- PLUMBING NOTES:**
- GRADES OF HORIZONTAL PIPINGS  
RUN ALL HORIZONTAL PIPINGS IN PERFECT ALIGNMENT AND AT A FORM GRADE NOT LESS THAN TWO PERCENT (2%)
  - CHANGE IN DIRECTION  
ALL CHANGE IN DIRECTION SHALL BE MADE BY APPROPRIATE USE OF FORTY-FIVE DEGREES (45°) WYES, LONG SWEEP QUARTER BEND, SIXTH-EIGHT OR SIXTEENTH BEND. WHEN THE CHANGE OF FLOW IS FROM HORIZONTAL TO VERTICAL A SINGLE 1/8 BEND COMBINATION MAYBE USED ON VERTICAL STACKS AND SHORT QUARTER BENDS MAYBE USED ON WASTE LINE, TEE AND CROSSES MAYBE USED IN BENT PIPES.
  - PROHIBITED FITTINGS  
NO DOUBLE HUB OR TEE BRANCH SHALL BE USED ON HORIZONTAL SOIL AND WASTE LINES, THE DRILLINGS AND TAPPING OF HOUSE DRAIN, WASTE OR VENT PIPES AND USED OF SADDLE HUB AND BEND ARE PROHIBITED.
  - PIPE CLEAN-OUTS  
CLEAN-OUTS ARE REQUIRED UNDER THE FOLLOWING CONDITIONS:  
a) EVERY CHANGE OF HORIZONTAL DIRECTION EXCEEDING TWENTY TWO AND ONE-HALF DEGREES (22 1/2°).  
b) ONE AND ONE-HALF METERS (1.50m) INSIDE THE PROPERTY LINES BEFORE THE HOUSE DRAINAGE CONNECTION.  
c) EVERY FIFTEEN METERS (15.00m) IN HORIZONTAL RUN OF PIPES.  
d) AT THE END OF ANY HORIZONTAL PIPE LINES.
  - THE DIGESTION CHAMBER OF SEPTIC VAULT MUST BE WATERPROOFED.
  - NOT LESS THAN 0.30 METER OF AIR SPACE MUST BE LEFT BETWEEN THE TOP OF THE SEWAGE AND THE UNDER PART OF VAULT ROOF SLAB.
  - NO SEPTIC VAULT SHALL BE CONSTRUCTED UNDER THE BUILDING.
  - ALL PLUMBING WORKS SHALL BE UNDER THE SUPRVISION OF A LICENSED MASTER PLUMBER AND A LICENCED PLUMBING CONTRACTOR.
  - ALL DIMENSION ARE IN MILLIMETER OTHERWISE SPECIFIED.

- DESIGN CRITERIA**
- i. LIVE LOAD \_\_\_\_\_ 1000Pa
  - ii ALLOWABLE STRESSES
    - CONCRETE
      - FOR FOOTING, BEAMS AND SLABS  
 $f_c' = 20 \text{ MPa}$
      - CONCRETE MASONRY UNITS (LOAD BEARING CHB)  
 $f_m' = 6.90 \text{ MPa}$ ,  $f_m = 2.41 \text{ MPa}$
      - REINFORCING STEEL BARS  
FOR BARS SMALLER THAN 16mmØ  
 $f_y = 230 \text{ MPa}$
      - ASSUMED ALLOWABLE BEARING CAPACITY  $\gamma = 100\text{KPa}$

**NOTE:**

- WATER TABLE IS 1500 BELOW GROUND LEVEL.

<div><div><div>REPUBLIC OF THE PHILIPPINES</div><div></div><div>DEPARTMENT OF EDUCATION</div><div>PHYSICAL FACILITIES AND SCHOOLS ENGINEERING DIVISION</div><div>MERALCO AVENUE, PASIG CITY</div></div><div></div></div>	PREPARED BY :	CHECKED BY :	RECOMMENDING APPROVAL :	APPROVED BY :	CONCURRED BY :	PROJECT TITLE :	PROJECT NO:	OWNER :	SHEET NO:			
	<div> MAXIMINO M. CALBANG PDO III PFSED-DepED</div>	<div> ELIAS MELQUIDES EMEL CUBA II ENGINEER III PFSED-DepED</div>	<div> LUIS S. PURISIMA, Jr. HEAD, PLANNING &amp; DESIGN UNIT PFSED-DepED</div>	<div> OLIVER R. HERNANDEZ CHIEF, PFSED-OPS DEPARTMENT OF EDUCATION</div>	<div> RAMON C. BACANI UNDERSECRETARY DEPARTMENT OF EDUCATION</div>	ONE STOREY SCIENCE LABORATORY BUILDING	DESIGNED BY: EMMBC ENCODED BY: MMC CHECKED BY: LGP DATE :	DEPARTMENT OF EDUCATION DepED	SHEET CONTENTS : PLUMBING LAYOUT ISOMETRIC VIEW SEPTIC TANK DETAIL DRAIN PIT DETAIL CATCH BASIN DETAIL TYP. COVER DETAIL	<div>P-I</div> <div>I</div>		
							LOCATION :					

NOTE: THIS DRAWING, AS AN INSTRUMENT OF SERVICE IS THE PROPERTY OF PHYSICAL FACILITIES AND SCHOOLS ENGINEERING DIVISION AND AS SUCH MUST NOT BE REPRODUCED OR COPIED IN PART OR IN WHOLE WITHOUT THEIR PERMISSION, ALL DRAWINGS ARE TO BE RETURNED WHEN NO LONGER IN USE.

REP. ACT 545

GENERAL NOTES

1. ALL ELECTRICAL WORKS SHALL COMPLY IN ACCORDANCE WITH THESE PLANS AND SPECIFICATIONS. THE APPLICABLE PROVISIONS OF THE LATEST EDITION OF THE PHILIPPINE ELECTRICAL CODE (PEC). THE RULES AND REGULATION OF THE LOCAL ENFORCING AUTHORITY AND THE REQUIREMENTS OF THE LOCAL POWER COMPANY. THE ELECTRICAL WORKS SHALL BE UNDER IMMEDIATE SUPERVISION OF A DULY REGISTERED ELECTRICAL ENGINEER.
2. THE ELECTRICAL SERVICE POWER IS 1–PHASE, 2–WIRE, 230 V AC, 60 Hz.
3. WIRING METHOD SHALL BE AS FOLLOWS :

a. FEEDERS AND RISERS – INTERMEDIATE METALLIC CONDUIT

b. LIGHTING, POWER RECEPTACLE – POLYVINYL CHLORIDE CONDUIT BRANCH CKT., & AUXILIARY SCH. 40
4. ALL WIRES SHALL BE COPPER AND THERMOPLASTIC INSULATED TYPE "THW" UNLESS OTHERWISE INDICATED IN THE PLAN. THE MINIMUM SIZE OF WIRE FOR POWER AND LIGHTING CIRCUIT HOMERUN SHALL BE 3.5mm² AND INSULATED FOR 600 VOLTS. SMALLEST RACEWAY SHALL BE 15mmø TRADE/NOMINAL SIZE.
5. ALL OUTLET BOXES SHALL BE GALVANIZED GAGE NO. 16 DEEP TYPE WITH FACTORY KNOCKOUTS.
6. ALL MATERIALS TO BE USED SHALL BE BRAND NEW AND APPROVED TYPE FOR THE PARTICULAR LOCATION AND PURPOSE OF USAGE.
7. GROUNDING SYSTEM SHALL BE PROVIDED TO ALL LIGHTING AND POWER CIRCUIT AS PER PHILIPPINE ELECTRICAL CODE REQUIREMENT.
8. MOUNTING HEIGHT OF WIRING DEVICES SHALL BE AS FOLLOWS :

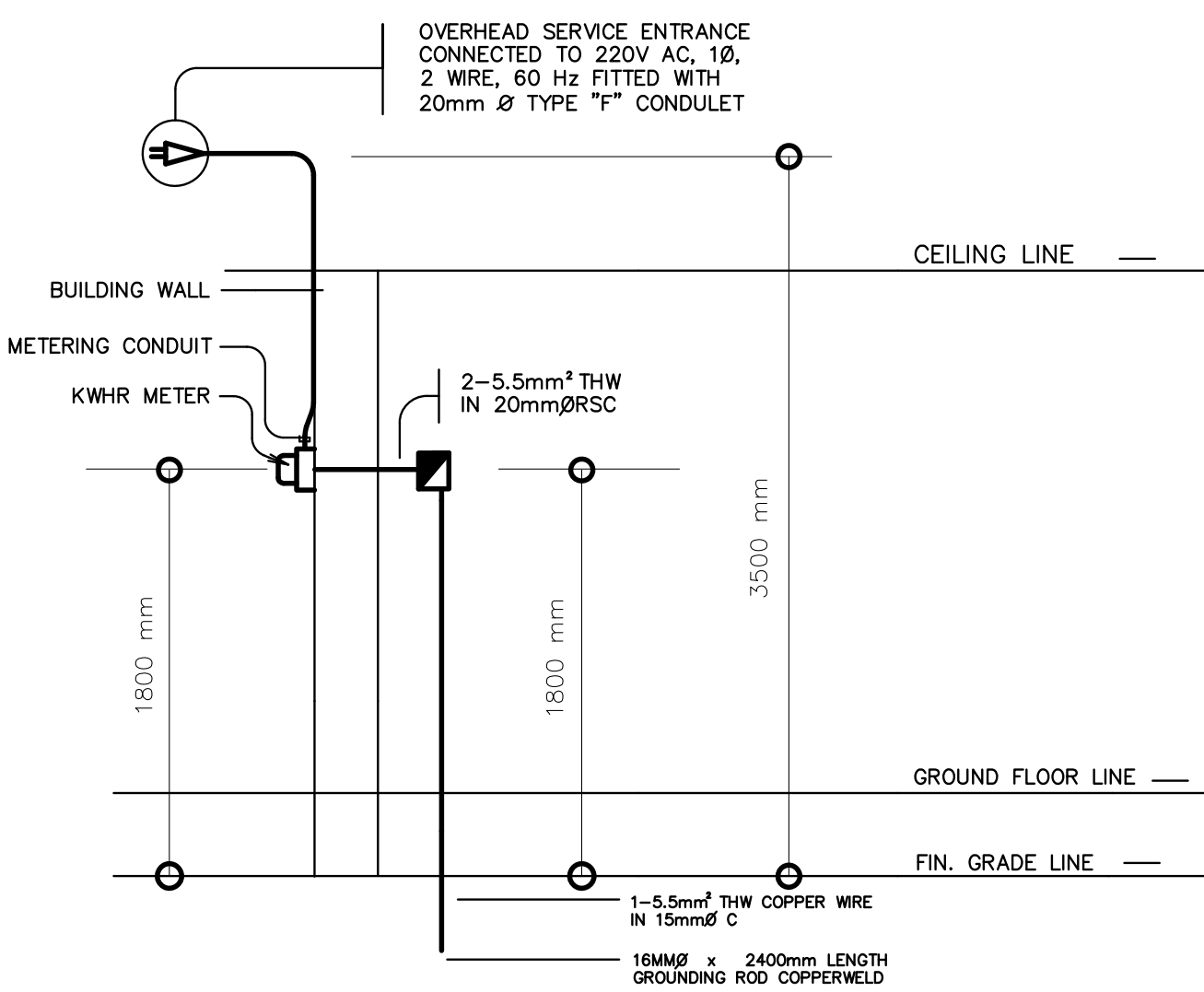
a. LIGHT SWITCH – 1.20 M ABOVE FINISH FLOOR

b. CONVENIENCE OUTLET – 0.30 M ABOVE FINISH FLOOR.

c. PANELBOARD – 1.80 M ABOVE FINISH FLOOR

LEGEND

SYMBOL	DESCRIPTION
	- CEILING LIGHT OUTLET
	- 2 x 40 WATTS FLUORESCENT LAMP
	- CEILING FAN OUTLET
S/Sa	- ONE GANG DEVICE SWITCH
Sab	- TWO GANG DEVICE SWITCH
Scde	- THREE GANG DEVICE SWITCH
\$W	- THREE WAY DEVICE SWITCH
Sf	- FAN CONTROL SWITCH
	- RACEWAY CONDUIT CONCEALED UNDER FLOOR
	- PANELBOARD
	- DUPLEX CONVENIENCE OUTLET, GROUNDING TYPE 10 AMPS, 250 VOLT WITH MODERN PLATE COVER
	- WEATHERPROOF TYPE DUPLEX CONVENIENCE OUTLET, GROUNDING TYPE 10 AMPS, 250 VOLT WITH MODERN PLATE COVER
	- HOMERUN DIRECT TO PANELBOARD
	- CIRCUIT BREAKER, RATING AS INDICATED
	- ELECTRIC SERVICE METER
	- SERVICE ENTRANCE



ELECTRICAL RISER DIAGRAM

LOAD SCHEDULE

PANELBOARD: LP				MAIN : 40AT, 100AF, 2P, 240V			
CKT. NO.	DESCRIPTION	VA LOAD	CIRCUIT BREAKER				WIRE & CONDUIT SIZE
			VOLT	POLE	A T	A F	
1	CONVENIENCE OUTLET	720	230	2	20	50	3–3.5mm <sup>2</sup> THW IN 15mm ØC
2	LIGHTS & FAN	1200	230	2	20	50	3–3.5mm <sup>2</sup> THW IN 15mm ØC
3	SPARE	1500	230	2	20	50	_____
	TOTAL	3420					

IL

=

3420

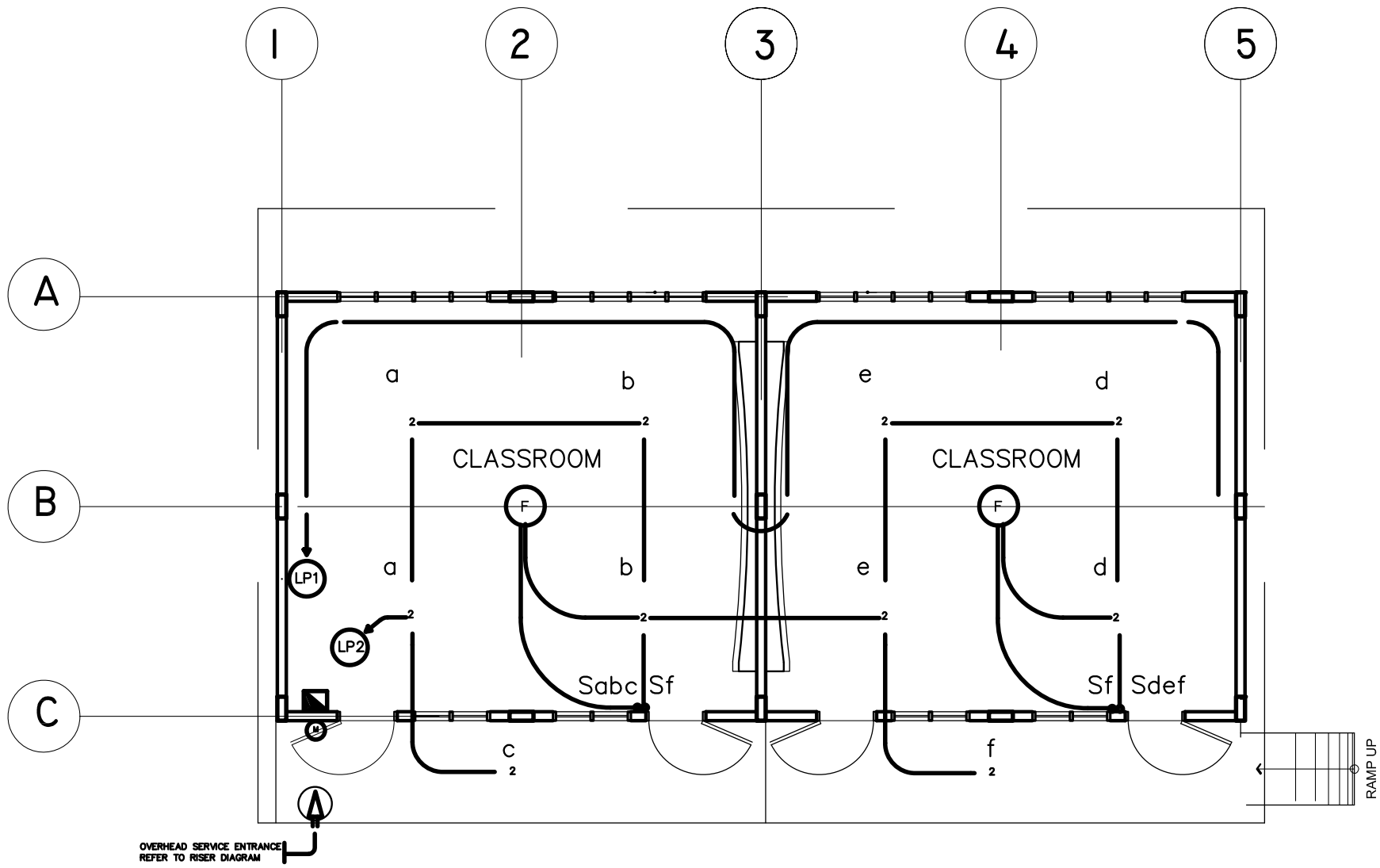
230 V

=


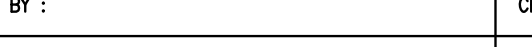
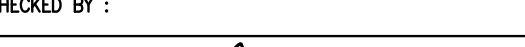
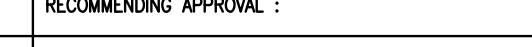
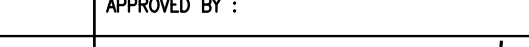
15 A

FEEDER: 2–5.5mm<sup>2</sup> THW IN 20mmØ RSC

PROTECTION: 40 AT, 50 AF, 2P, 240 V



ELECTRICAL LAYOUT

<div><div>REPUBLIC OF THE PHILIPPINES</div><div><b>DepED</b></div><div>DEPARTMENT OF EDUCATION</div><div>PHYSICAL FACILITIES AND SCHOOLS ENGINEERING DIVISION</div><div>MERALCO AVENUE, PASIG CITY</div></div>	PREPARED BY :	CHECKED BY :	RECOMMENDING APPROVAL :	APPROVED BY :	PROJECT TITLE :	PROJECT NO: 0000009	OWNER :	SHEET NO:		
	<div> <u>MAXIMO M. CALBANG</u> PDO – III PFSED–DepED</div>	<div> <u>VENERANDO D. SAHAGUN</u> ENGINEER III PFSED–DepED</div>	<div> <u>LUIS C. PURISIMA JR.</u> HEAD, PLANNING AND DESIGN UNIT PFSED–DepED</div>	<div> <u>OLIVER R. HERNANDEZ</u> CHIEF, PFSED–OPS DepED</div>	ONE STOREY SCIENCE LABORATORY BUILDING	DESIGNED BY: VDS	DEPARTMENT OF EDUCATION DepED	SHEET CONTENTS :  GENERAL NOTES ELECTRICAL LAYOUT	LOAD SCHEDULE LEGEND RISER DIAGRAM	E - I  I
					ENCODED BY: Max C.					
					CHECKED BY: LGP					
					LOCATION :	DATE : 01 01 2006				

NOTE: THIS DRAWING, AS AN INSTRUMENT OF SERVICE IS THE PROPERTY OF PHYSICAL FACILITIES AND SCHOOLS ENGINEERING DIVISION AND AS SUCH MUST NOT BE REPRODUCED OR COPIED IN PART OR IN WHOLE WITHOUT THEIR PERMISSION. ALL DRAWINGS ARE TO BE RETURNED WHEN NO LONGER IN USE.