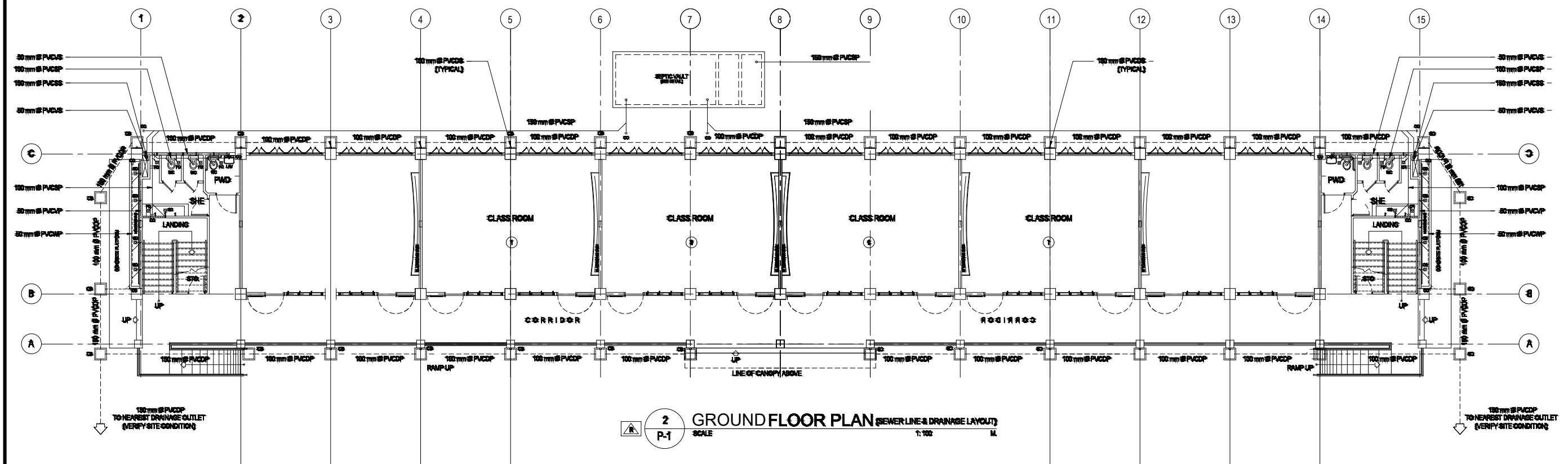

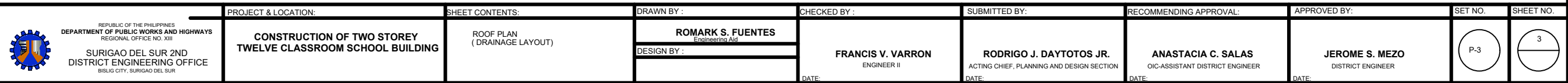


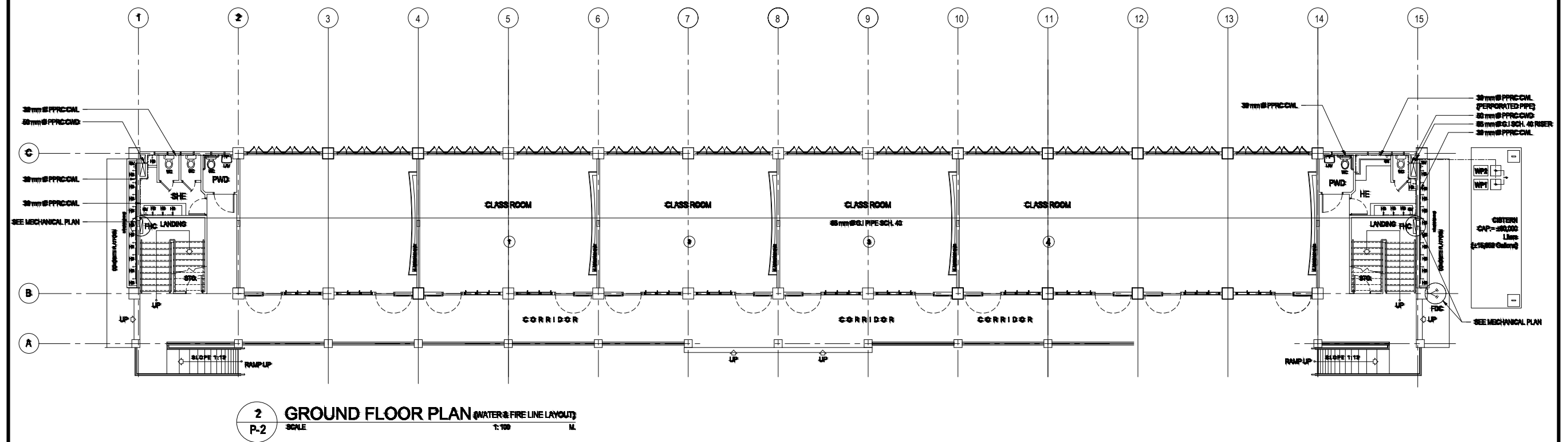
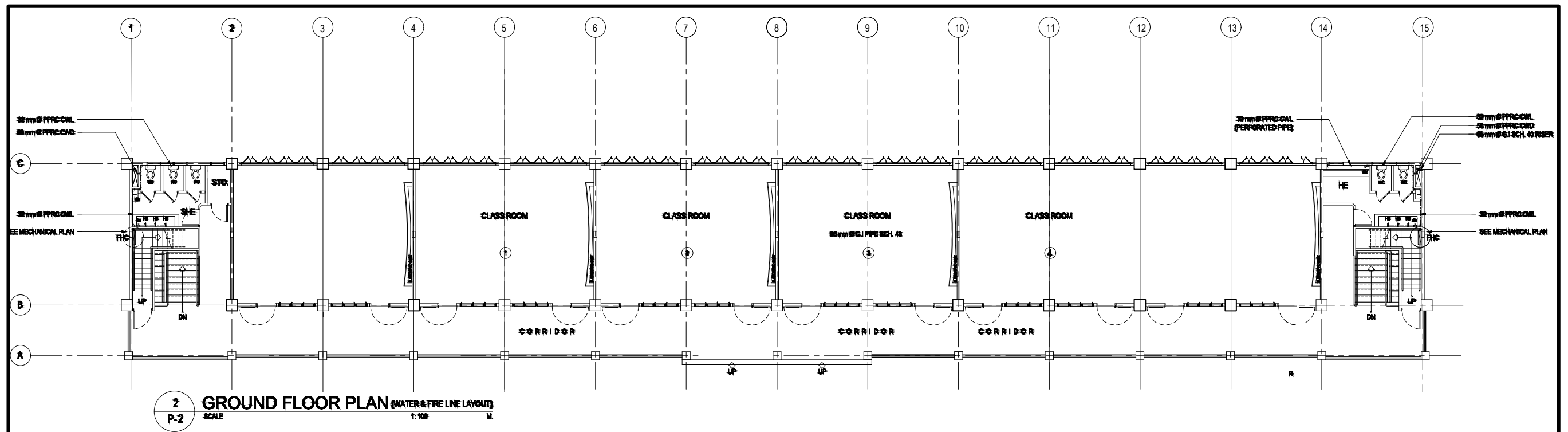
2 SECOND FLOOR PLAN (SEWER LINE & DRAINAGE LAYOUT)
SCALE 1:100 M
P-1




2 GROUND FLOOR PLAN (SEWER LINE & DRAINAGE LAYOUT)
SCALE 1:100 M
P-1

 <p>REPUBLIC OF THE PHILIPPINES DEPARTMENT OF PUBLIC WORKS AND HIGHWAYS REGIONAL OFFICE NO. XIII SURIGAO DEL SUR 2ND DISTRICT ENGINEERING OFFICE BISLIG CITY, SURIGAO DEL SUR</p>	<p>PROJECT & LOCATION:</p> <p>CONSTRUCTION OF TWO STOREY TWELVE CLASSROOM SCHOOL BUILDING</p>	<p>SHEET CONTENTS:</p> <p>GROUND FLOOR PLAN SECOND FLOOR PLAN SEWER LINE & DRAINAGE LAYOUT SEWER LINE & DRAINAGE LAYOUT</p>	<p>DRAWN BY:</p> <p>ROMARK S. FUENTES Engineering Aid</p> <p>DESIGN BY:</p>	<p>CHECKED BY:</p> <p>FRANCIS V. VARRON ENGINEER II</p> <p>DATE:</p>	<p>SUBMITTED BY:</p> <p>RODRIGO J. DAYTOTOS JR. ACTING CHIEF, PLANNING AND DESIGN SECTION</p> <p>DATE:</p>	<p>RECOMMENDING APPROVAL:</p> <p>ANASTACIA C. SALAS OIC-ASSISTANT DISTRICT ENGINEER</p> <p>DATE:</p>	<p>APPROVED BY:</p> <p>JEROME S. MEZO DISTRICT ENGINEER</p> <p>DATE:</p>	<p>SET NO.</p> <p>P-1</p>	<p>SHEET NO.</p>
--	--	---	--	---	---	---	---	---------------------------	------------------





 <p>REPUBLIC OF THE PHILIPPINES DEPARTMENT OF PUBLIC WORKS AND HIGHWAYS REGIONAL OFFICE NO. XIII SURIGAO DEL SUR 2ND DISTRICT ENGINEERING OFFICE BISLIG CITY, SURIGAO DEL SUR</p>	PROJECT & LOCATION:	SHEET CONTENTS:	DRAWN BY :	CHECKED BY :	SUBMITTED BY:	RECOMMENDING APPROVAL:	APPROVED BY:	SET NO.	SHEET NO.
	CONSTRUCTION OF TWO STOREY TWELVE CLASSROOM SCHOOL BUILDING	SECOND FLOOR PLAN (WATER & FIRE LAYOUT) GROUND FLOOR PLAN (WATER & FIRE LAYOUT)	ROMARK S. FUENTES Engineering Aid	FRANCIS V. VARRON ENGINEER II	RODRIGO J. DAYTOTOS JR. ACTING CHIEF, PLANNING AND DESIGN SECTION	ANASTACIA C. SALAS OIC-ASSISTANT DISTRICT ENGINEER	JEROME S. MEZO DISTRICT ENGINEER	P-2	2
			DESIGN BY :						
				DATE:	DATE:	DATE:	DATE:		