



SCHEDULE OF COLUMNS (EXPOSURE D AND V=340kph)

MARK	FOOTING TO GROUND FLR LEVEL	GROUND TO ROOF DECK LEVEL	GROUND TO ROOF DECK LEVEL
C-1			
C-2			
C-3			
C-4			

SCHEDULE OF SLABS

MARK	THICKNESS	REINFORCING BARS		REMARKS
		PARALLEL TO LONG SPAN	PARALLEL TO SHORT SPAN	
S-1	100mm+FIN.	12mmØ @ 250 mm O.C. BENT-UP 2 OUT OF 3 @ L/4 FROM FACE OF SUPPORT	12mmØ @ 190mm O.C. BENT-UP 2 OUT OF 3 @ L/4 FROM FACE OF SUPPORT	TWO - WAY
S-2	100mm+FIN.	12mmØ @ 200mm O.C. BENT-UP 2 OUT OF 3 @ L/4 FROM FACE OF SUPPORT	12mmØ @ 150mm O.C. BENT-UP 2 OUT OF 3 @ L/4 FROM FACE OF SUPPORT	TWO - WAY
S-3	100mm+FIN.	10mm Ø TEMPERATURE BARS @ 250mm O.C.	12mmØ @ 250mm O.C. BENT-UP 2 OUT OF 3 @ L/4 FROM FACE OF SUPPORT	ONE - WAY
S-4	120mm+FIN.	12mmØ @ 250mm O.C. BENT-UP 2 OUT OF 3 @ L/4 FROM FACE OF SUPPORT	12mmØ @ 140mm O.C. BENT-UP 2 OUT OF 3 @ L/4 FROM FACE OF SUPPORT	TWO- WAY

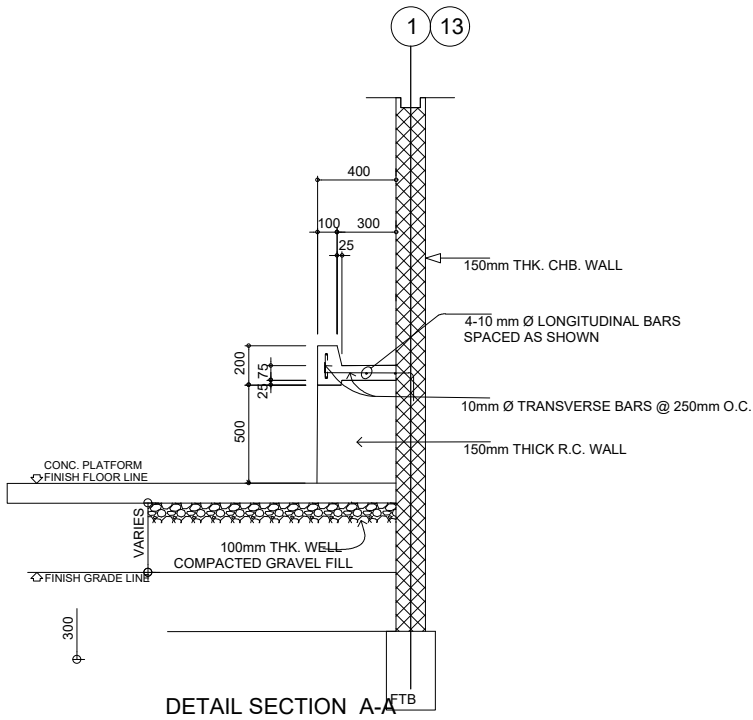
LEGEND:

**S** SUPPLEMENTAL DRAWING DETAILS (1000001)

- ADDITIONAL SCHEDULE DETAILS OF STRUCTURAL MEMBERS FOR EXPOSURE CATEGORY D - FLAT, UNREINFORCED AREAS AND/OR STRUCTURE NEAR THE CORNERS OR OTHER BOARDS OF WATER EXPOSURE CATEGORY B - URBAN AND SUBURBAN AREAS, WOODEN AREAS, OR OTHER TERRAIN WITH NUMEROUS CLOSELY SPACED CONSTRUCTIONS HAVING THE SIZE OF SINGLE-FAMILY DWELLINGS OR LARGER HAVING WIND VELOCITY OF 340kph

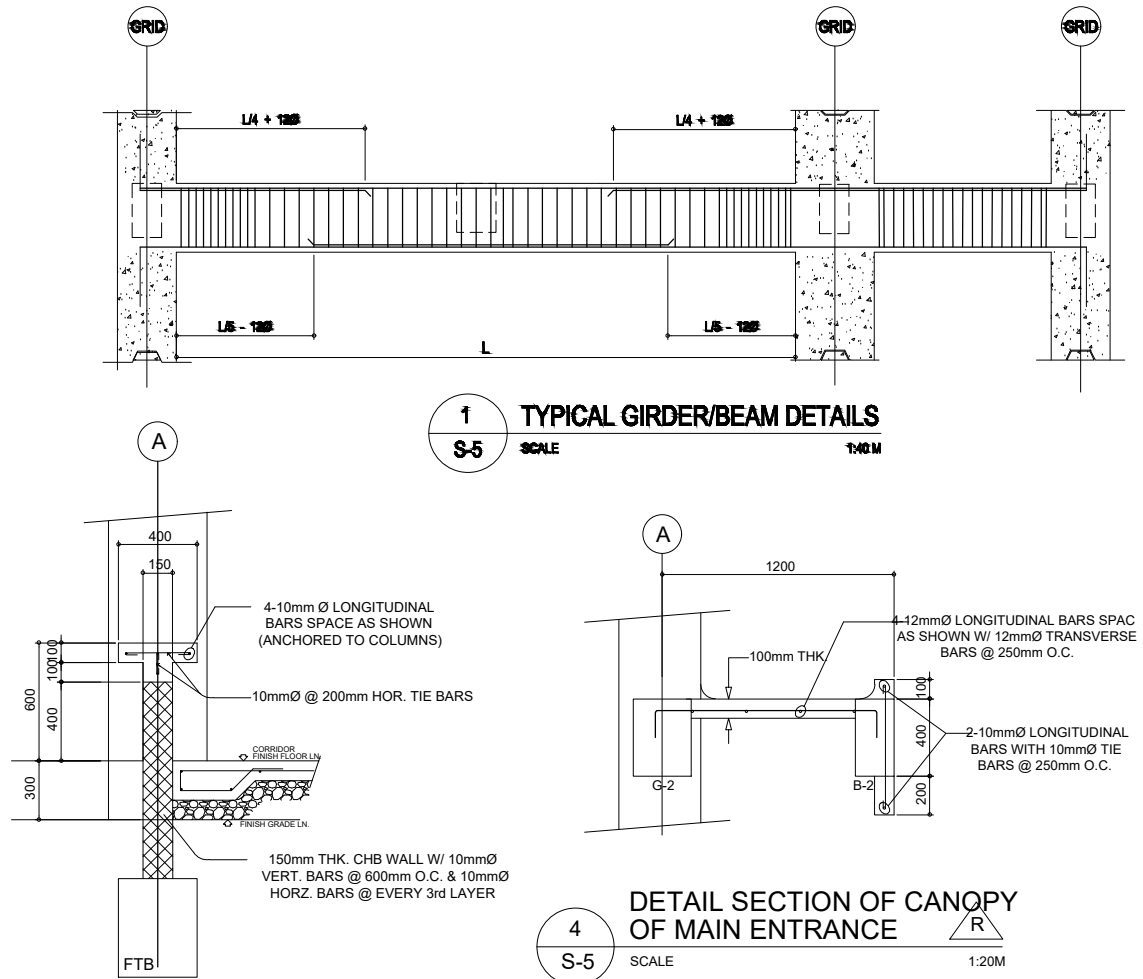
**R** REVISION ON THE DRAWING DETAILS (1000001)

- ADDITIONAL CANOPY (REINFORCED CONCRETE) ALONG MAIN ENTRANCE, AS RECOMMENDED ON THE PROPOSED DESIGN  
- REVISION OF CONCRETE WALLING AT GROUND FLOOR (FROM 150mm THK. CHB WALL TO REINFORCED CONCRETE BENCH) ADAPTING THE PROPOSED DESIGN



2 DETAILS OF LAVATORY (HANDWASH)

S-5 SCALE 1:20 M



1 TYPICAL GIRDER/BEAM DETAILS

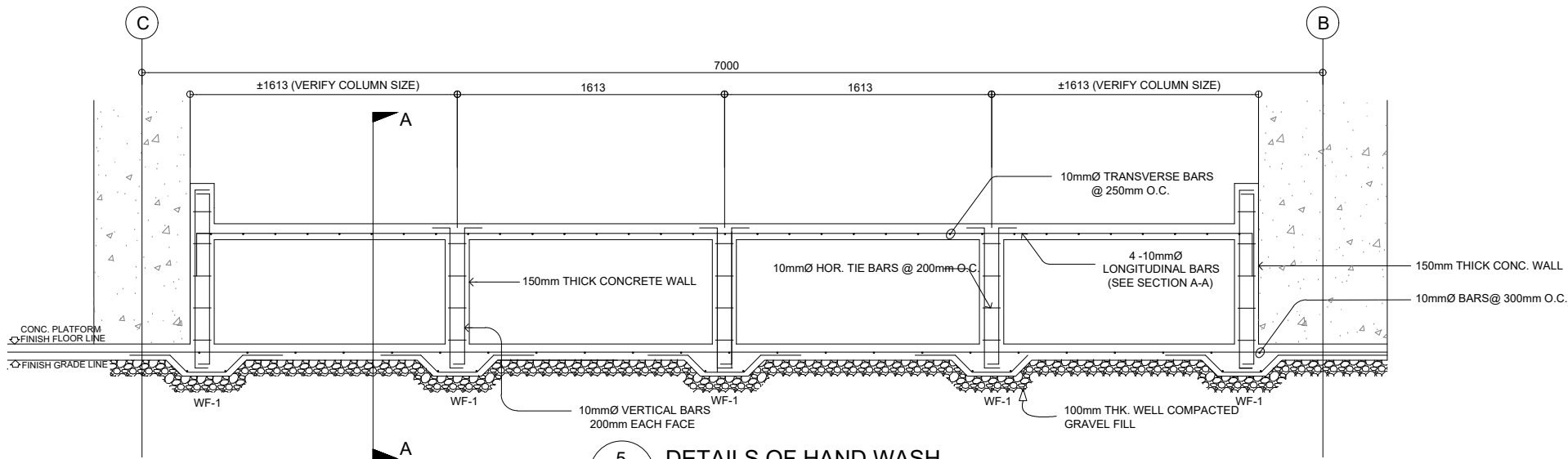
S-5 SCALE 1:40 M

3 DETAIL OF CONC. SEATING

S-5 SCALE 1:20 M

4 DETAIL SECTION OF CANOPY OF MAIN ENTRANCE

S-5 SCALE 1:20 M



5 DETAILS OF HAND WASH

S-5 SCALE 1:20 M



REPUBLIC OF THE PHILIPPINES  
DEPARTMENT OF PUBLIC WORKS AND HIGHWAYS  
REGIONAL OFFICE NO. XIII  
SURIGAO DEL SUR 2ND  
DISTRICT ENGINEERING OFFICE  
BILIG CITY, SURIGAO DEL SUR

PROJECT & LOCATION:

CONSTRUCTION OF TWO STOREY  
TWELVE CLASSROOM SCHOOL BUILDING

SHEET CONTENTS

BEAM DETAILS  
HANDWASH DETAILS  
CONCRETE SEATING DETAIL  
DETAIL SECTION OF CANOPY

DRAWN BY :

ROMARK S. FUENTES

Engineering Aid

DESIGN BY :

SMITH S. SOLIS

ENGINEER II

CHECKED BY :

FRANCIS V. VARRON

ENGINEER II

DATE:

SUBMITTED BY:

RODRIGO J. DAYTOTOS JR.

ACTING CHIEF, PLANNING AND DESIGN SECTION

DATE:

RECOMMENDING APPROVAL:

ANASTACIA C. SALAS

OIC-ASSISTANT DISTRICT ENGINEER

DATE:

APPROVED BY:

JEROME S. MEZO

DISTRICT ENGINEER

DATE:

SET NO.

S-5

SHEET NO.

05